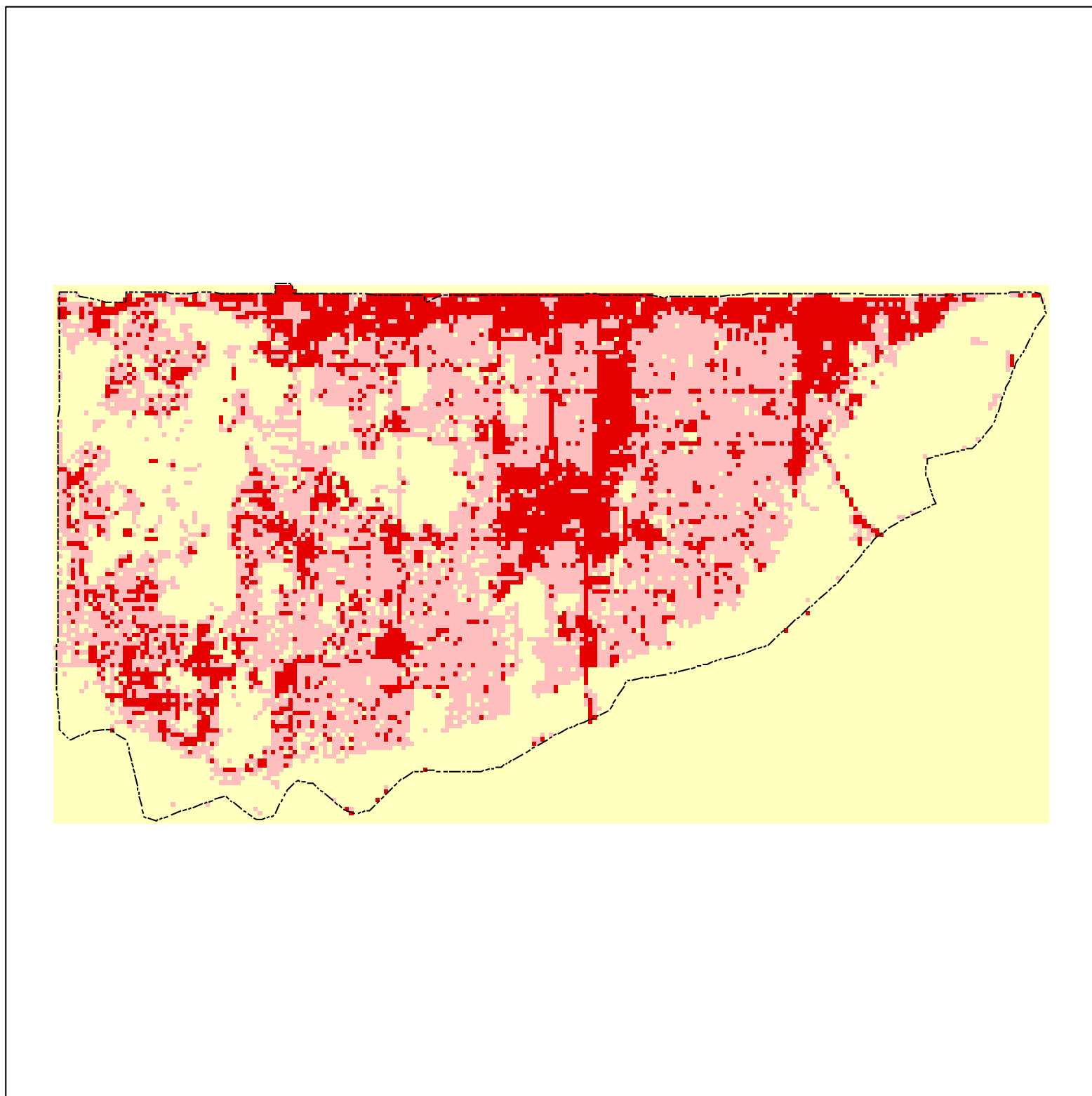
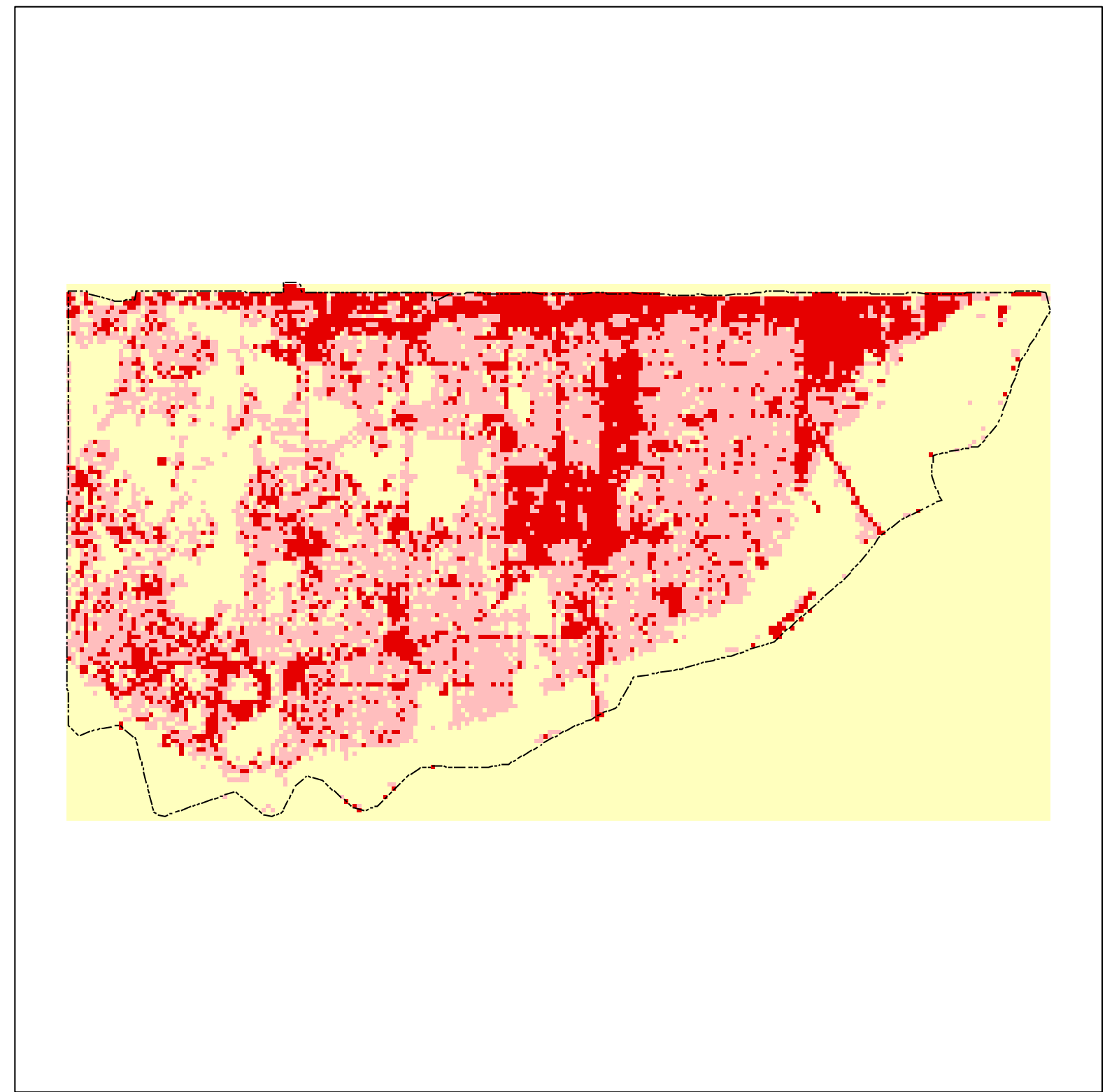


City of Bloomington Impervious Coverage based on Satellite Remote Sensing

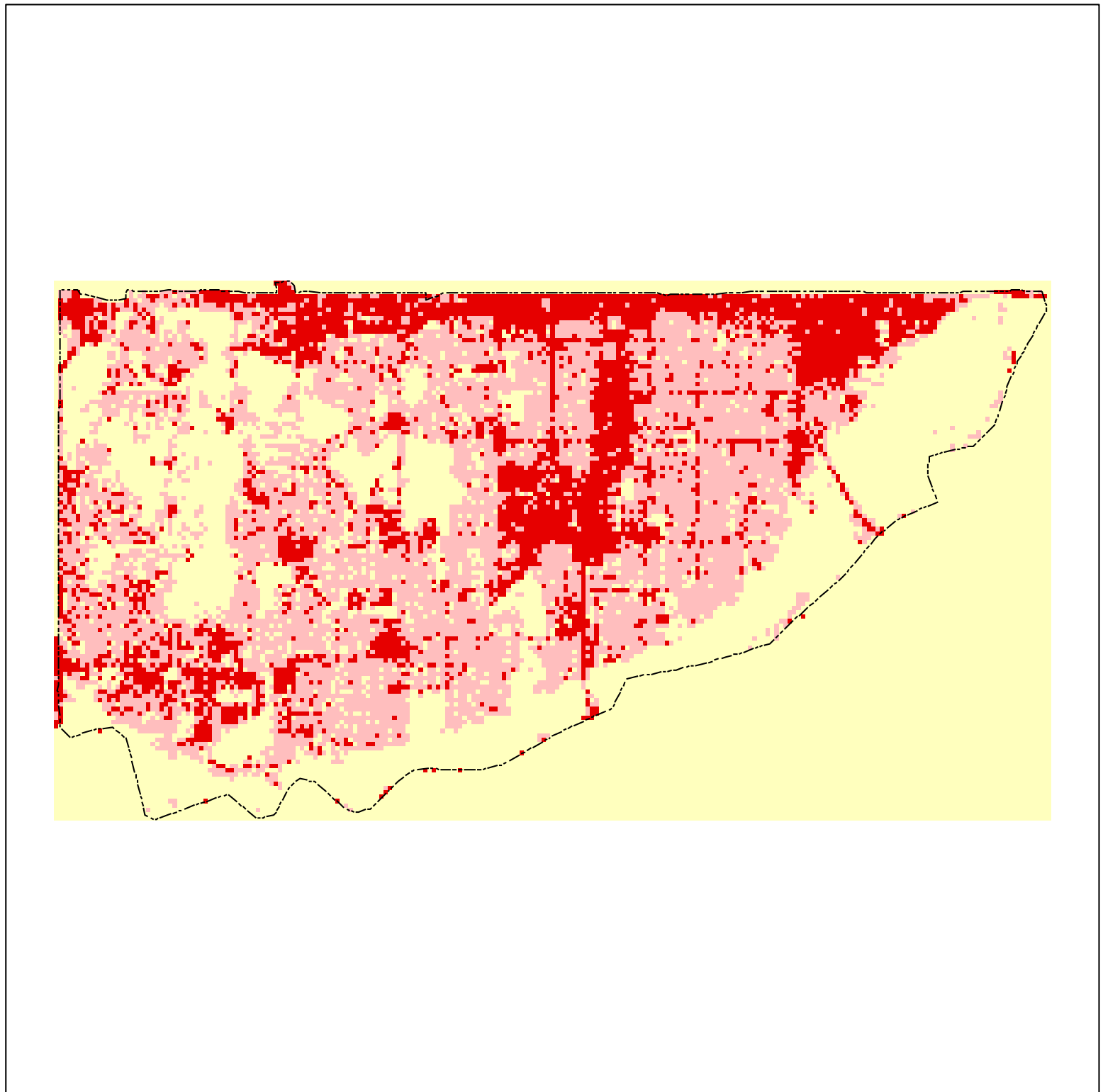
1986



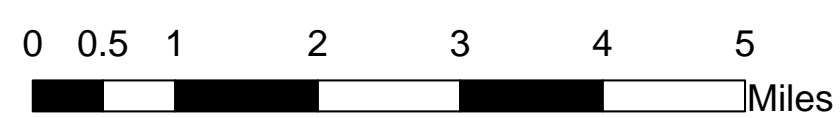
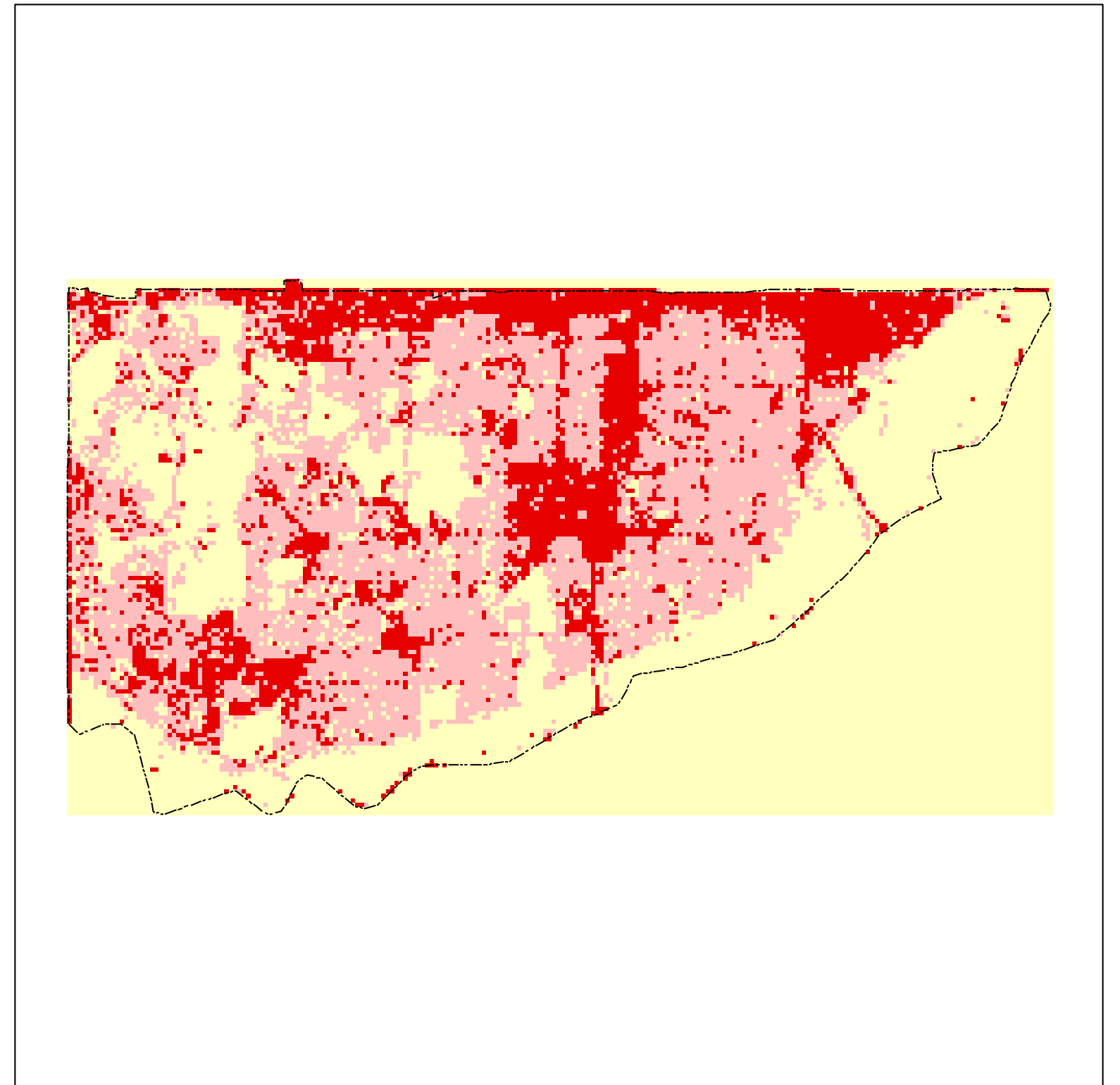
1991



1998



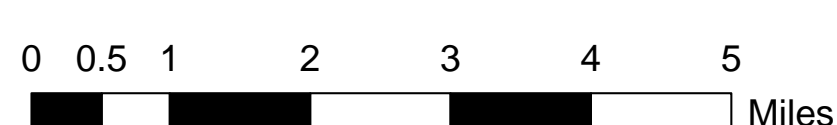
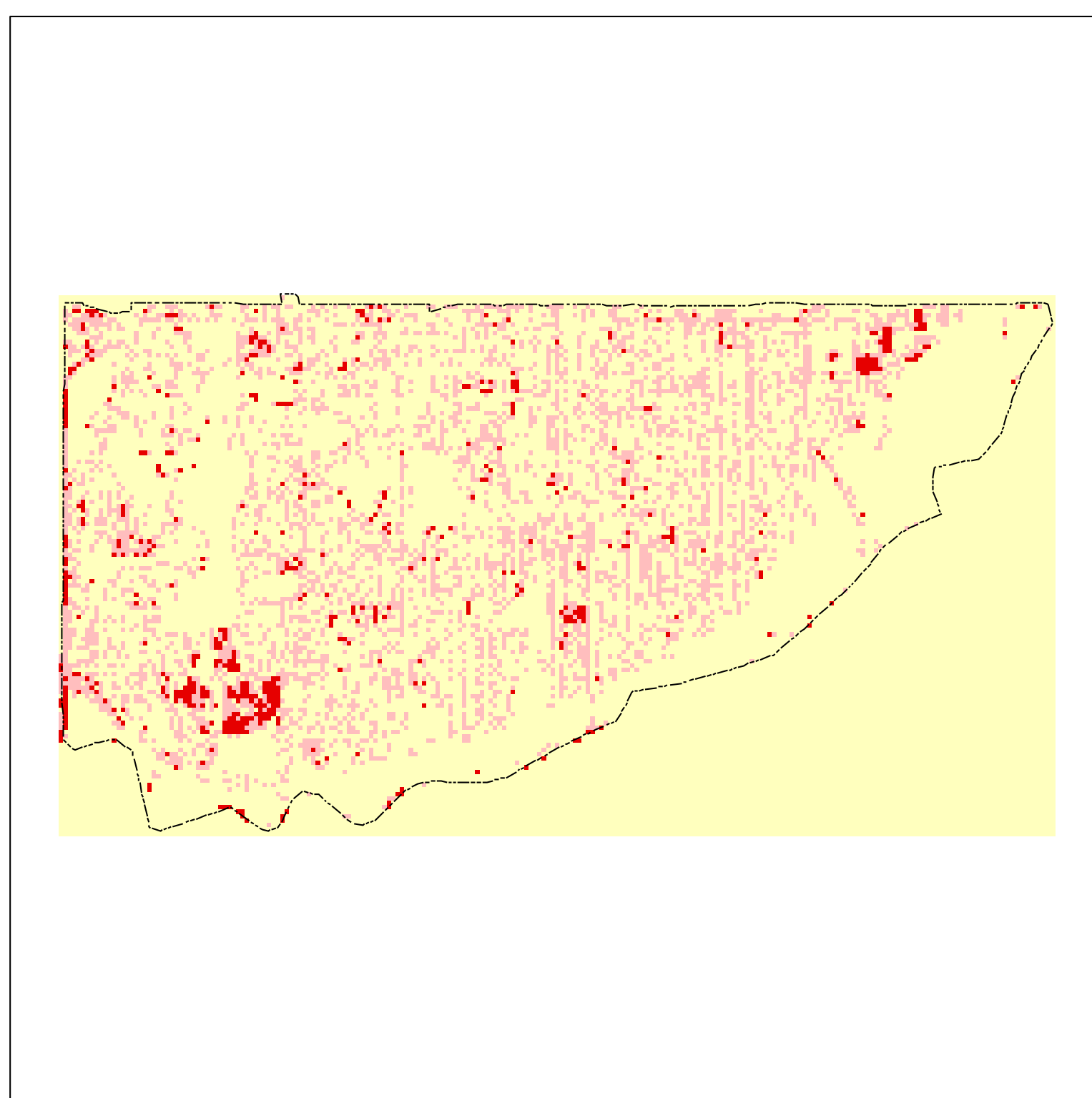
2002



1986 through 2002 Impervious Cover



Percent Change from 1986 to 2002



| Impervious Acres | | | | | 1986-2002 Change |
|------------------|--------|--------|--------|--------|---------------------|
| Municipality | 1986 | 1991 | 1998 | 2002 | |
| Bloomington | 6988.7 | 7236.9 | 7218.3 | 7327.9 | 339.2 |

% Change

