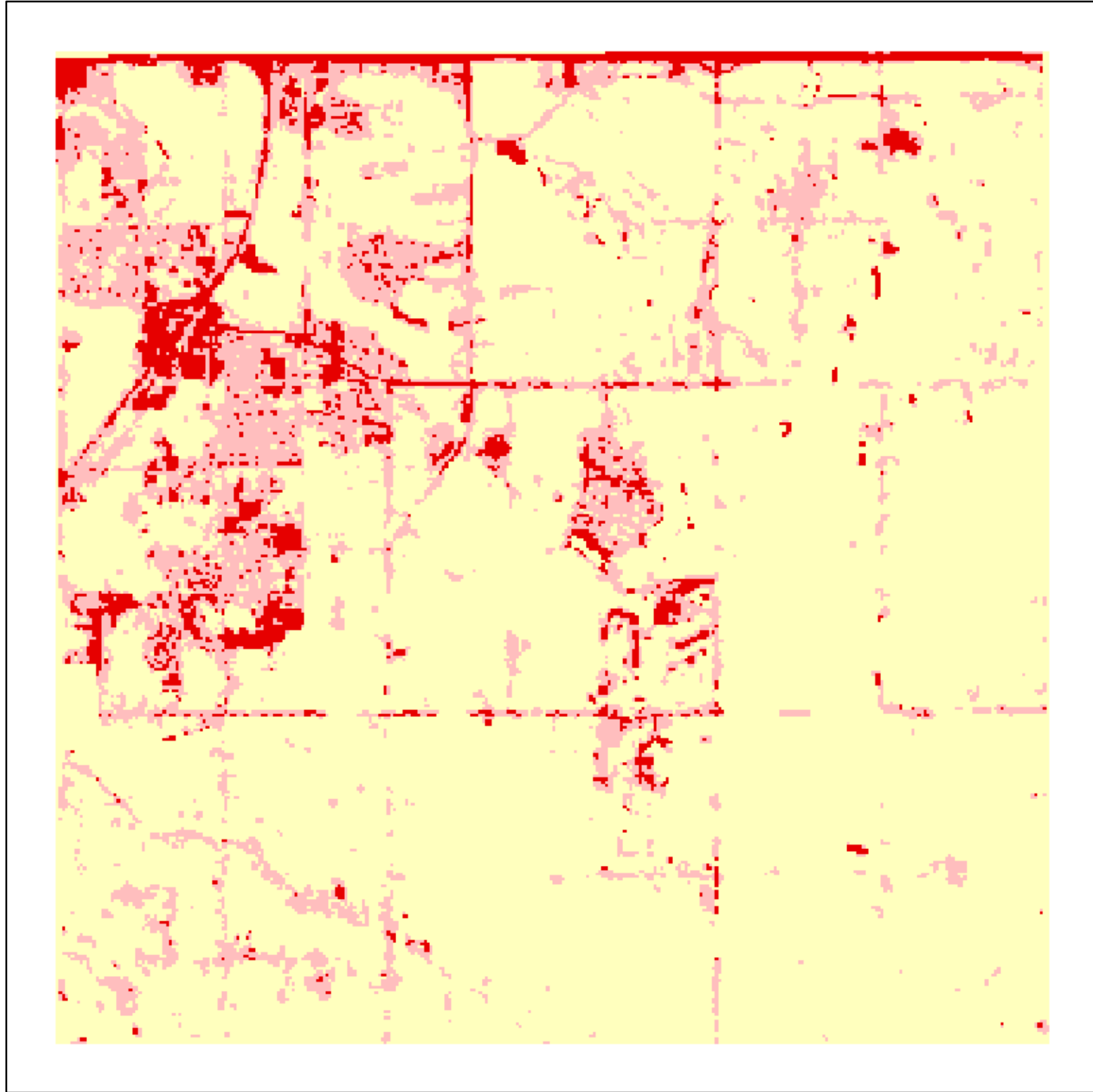
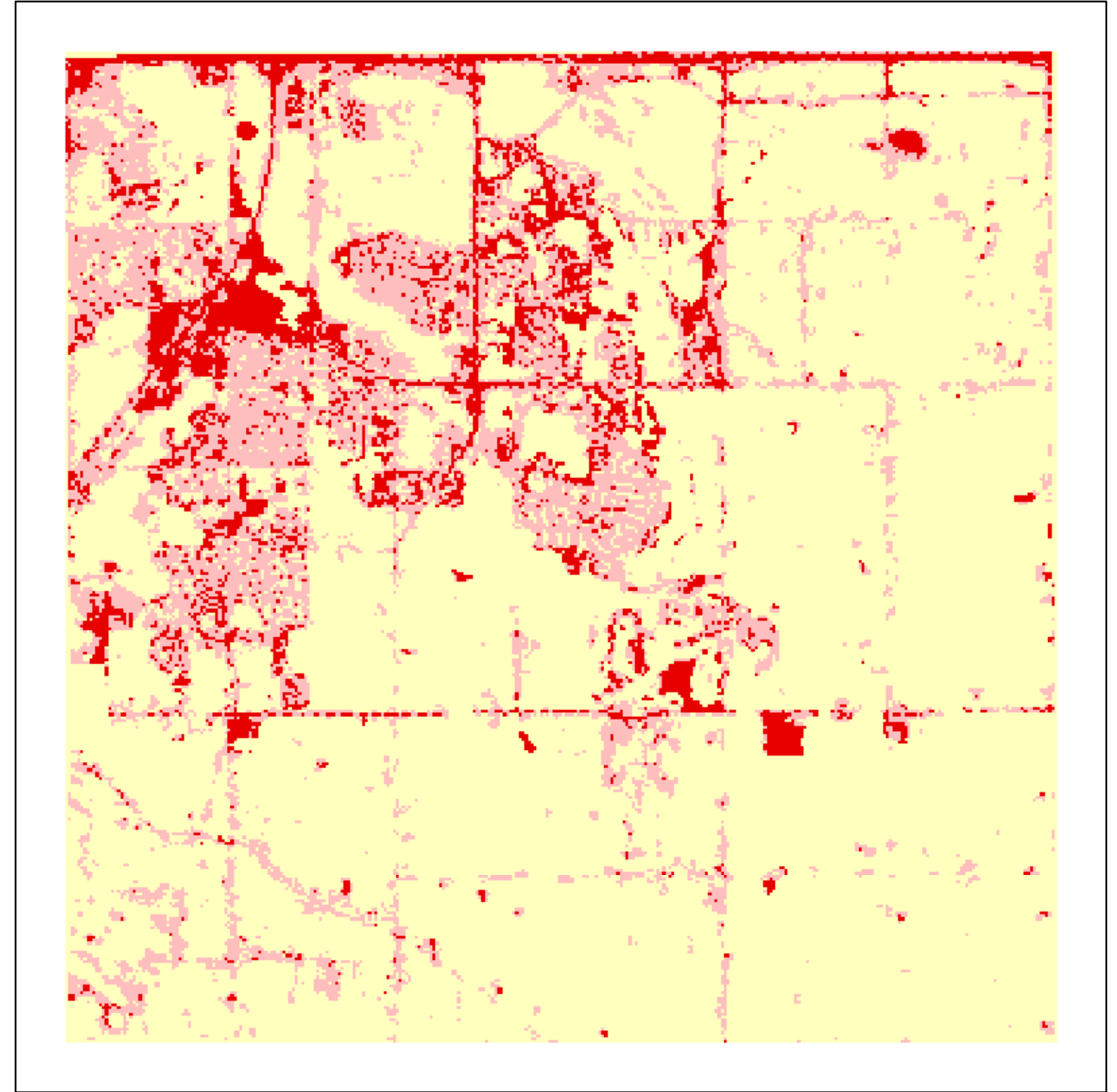


City of Woodbury Impervious Coverage based on Satellite Remote Sensing

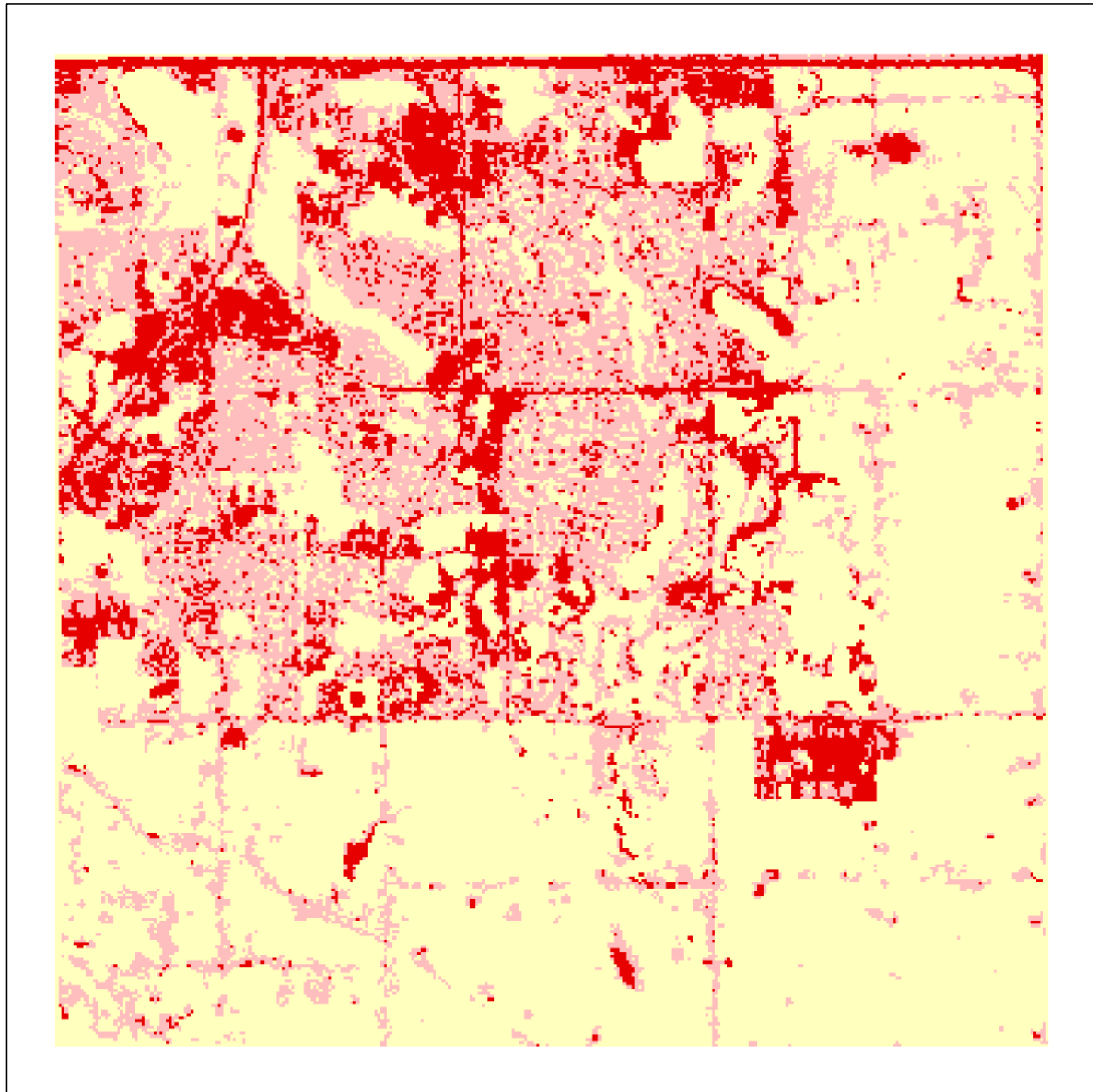
1986



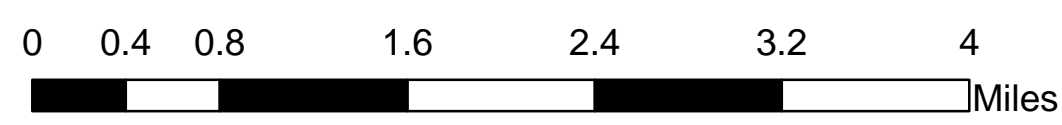
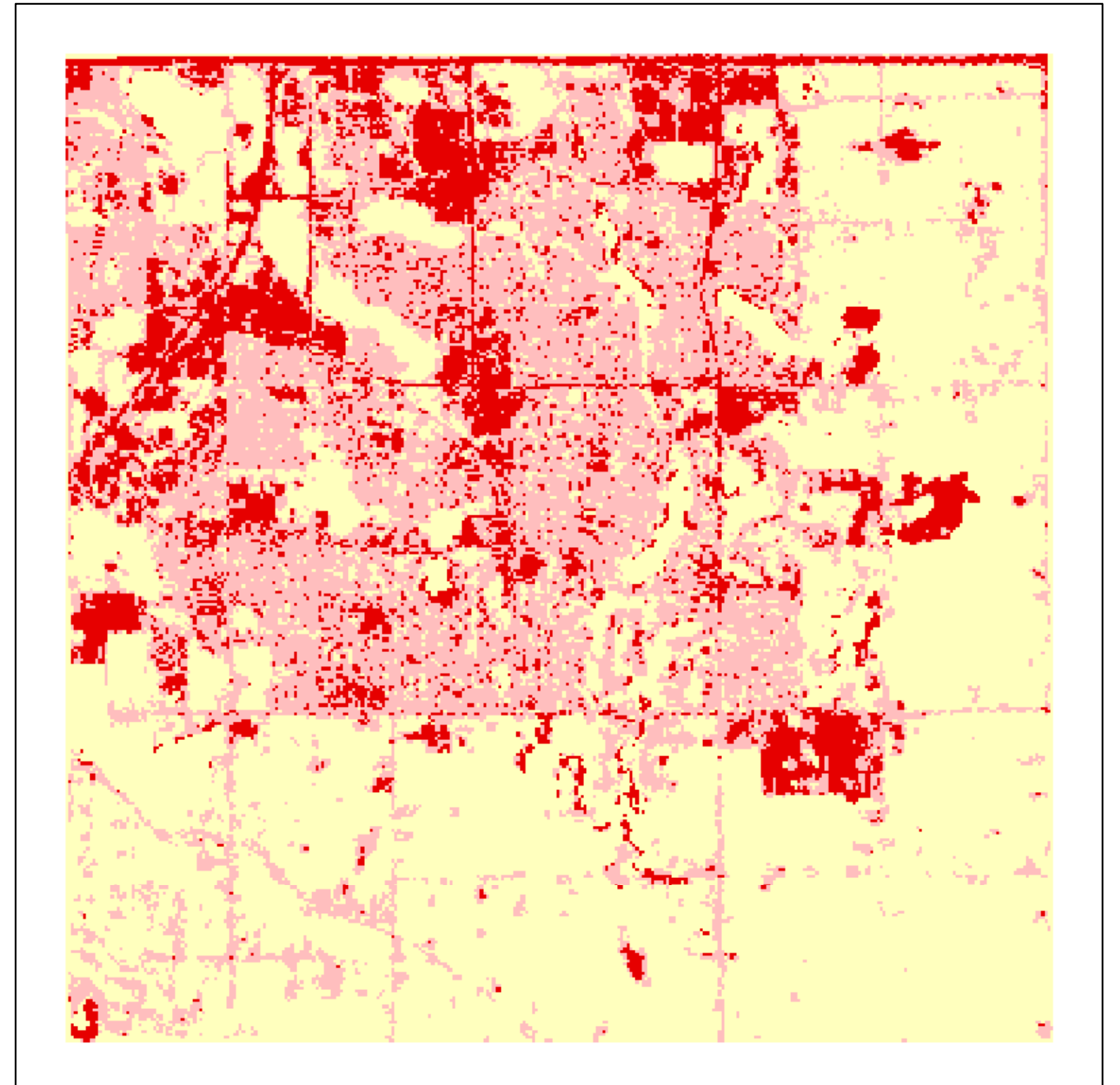
1991



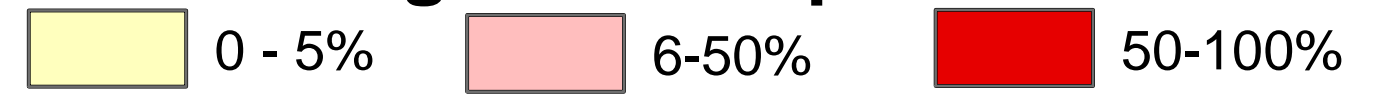
1998



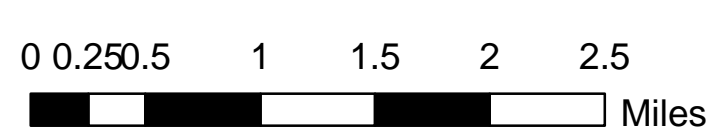
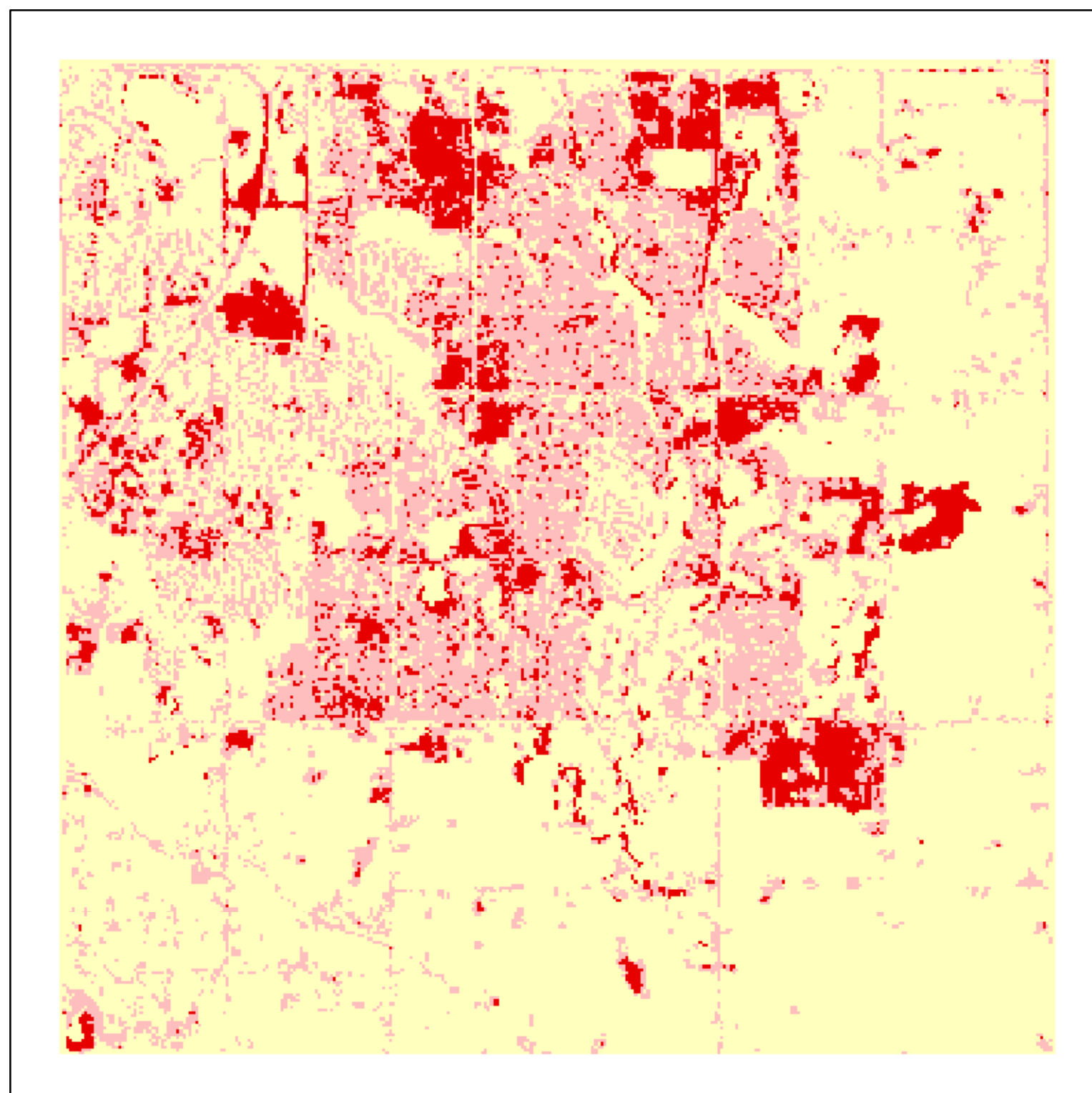
2002



1986 through 2002 Impervious Cover



Percent Change from 1986 to 2002



Municipality	Impervious Acres				1986-2002 Change
	1986	1991	1998	2002	
Woodbury	1949.1	2572.6	4168.9	4437.8	2488.7

% Change

