

CARPENTER CREEK REALIGNMENT PROJECT

VILLAGE OF CARPENTERSVILLE

KANE COUNTY, IL

2013



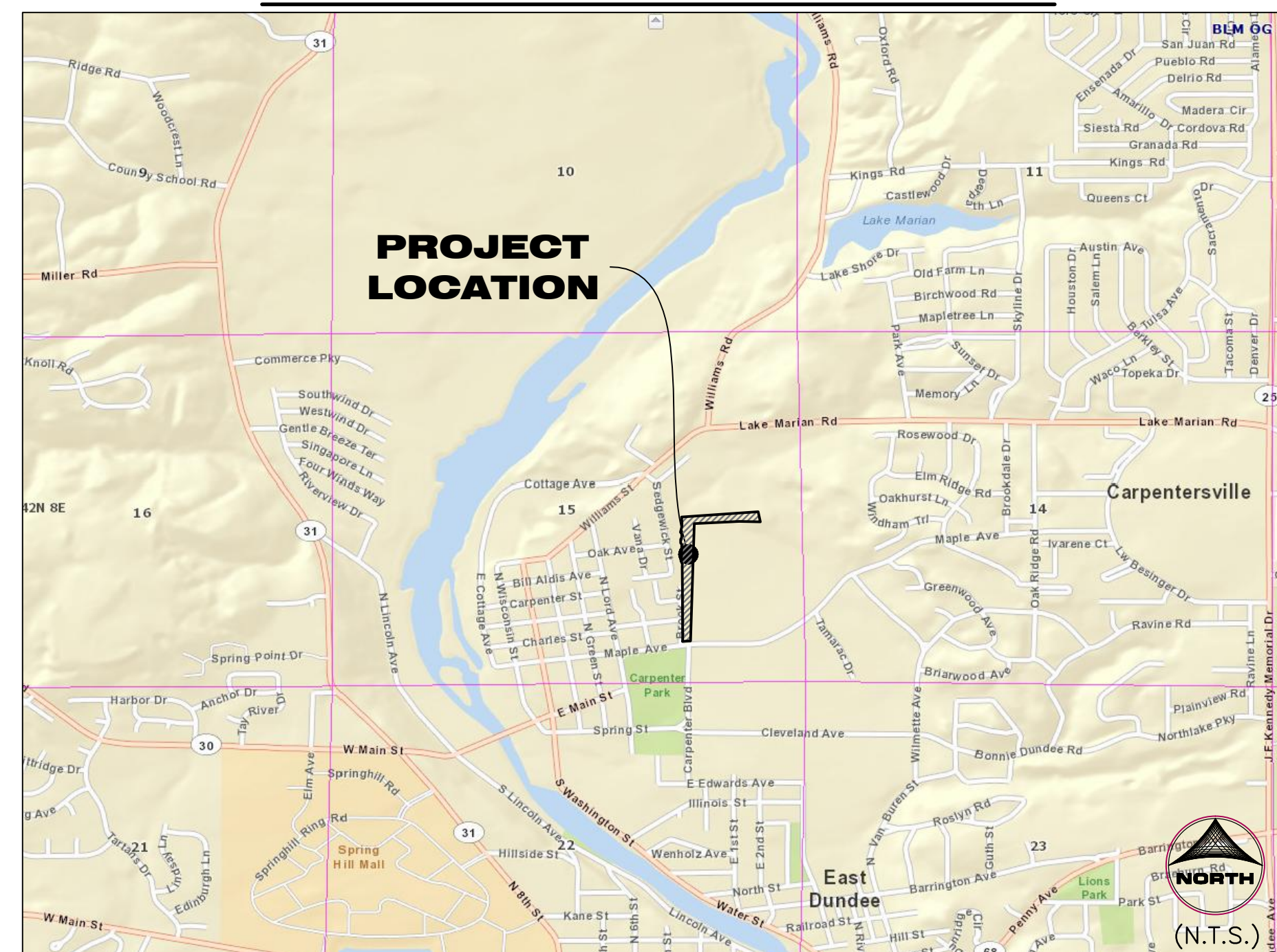
CERTIFICATION

CIVIL

I hereby certify that this engineering document was prepared by me or under my direct personal supervision and that I am a duly licensed Professional Engineer under the laws of the State of Illinois.

AJAY JAIN, P.E. DATE
 License Number: _____
 My license renewal date is 11/30/2013.
 Pages or sheets covered by this seal:
 ##### - C124, LS100 - LS104, GV100 - GV105,

LOCATION MAP



SHEET INDEX

Sheet Number	Sheet Title
C-01	COVER SHEET
C-02	STORMWATER BEST MANAGEMENT PRACTICES (BMP) DETAILS
C-03	TYPICAL SECTIONS
C-04	OVERALL PLAN LAYOUT
C-05	PLAN AND PROFILE, STA. 100+00 TO STA. 105+00
C-06	PLAN AND PROFILE, STA. 105+00 TO STA. 111+00
C-07	PLAN AND PROFILE, STA. 111+00 TO STA. 117+00
C-08	PLAN AND PROFILE, STA. 117+00 TO STA. 121+00
C-09	PLAN AND PROFILE, STA. 200+00 TO STA. 205+00
C-10	PLAN AND PROFILE, STA. 205+00 TO STA. 208+50

CLIENT:

MR. J. MARK ROONEY VILLAGE MANAGER
 VILLAGE OF CARPENTERSVILLE
 1200 L.W. BESINGER DRIVE,
 CARPENTERSVILLE, IL 60110
 PHONE: (847) 426-3439

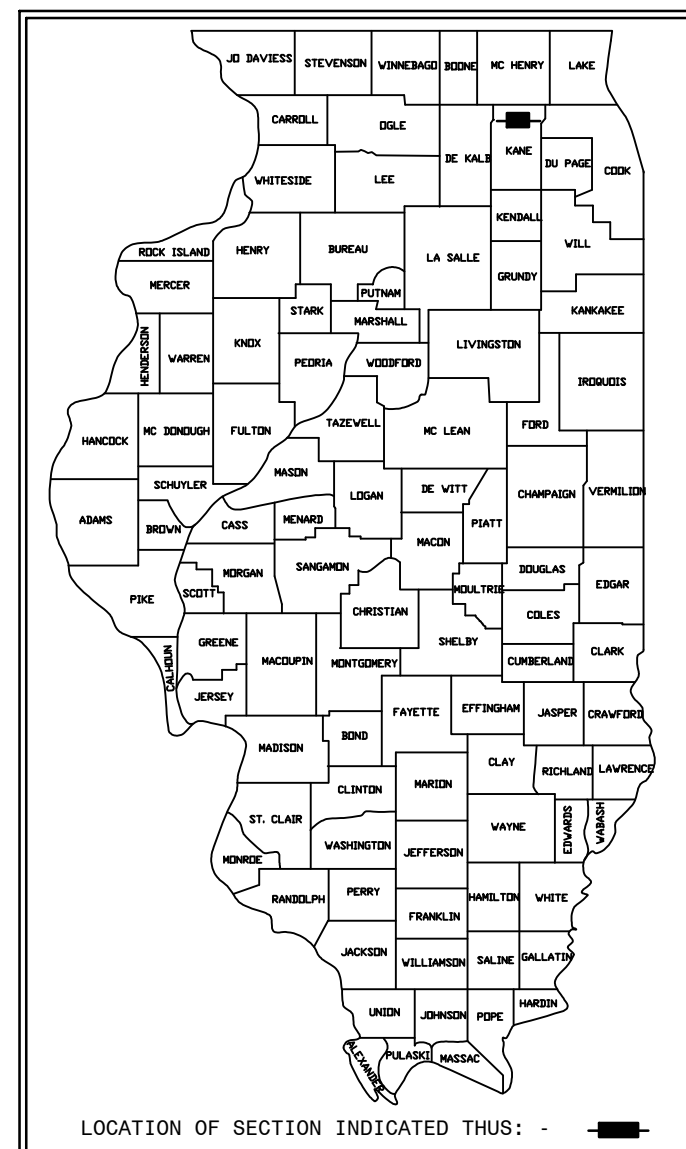
ENGINEER / SURVEYOR:

HR GREEN INC.,
 420 N. FRONT ST.
 McHENRY IL. 60050
 PHONE: (815) 385-1778

AJAY JAIN, P.E. – SENIOR PROJECT MANAGER
 PHONE: (815) 759-8331

DAVID SCHULTZ, P.E. PROJECT MANAGER
 PHONE: (630) 708-5002

DOUG STALKER, PROJECT SURVEYOR
 PHONE: (815) 759-8355



420 N. FRONT STREET, SUITE 100 | McHENRY, IL 60050

Phone: 815.385.1778 | Toll Free: 800.728.7805 | Fax: 815.385.1781 | HRGreen.com

NOTE:

- HR GREEN, INC. IS TO BE NOTIFIED 3 DAYS PRIOR TO CONSTRUCTION START.
- HR GREEN, INC. SHALL BE INCLUDED IN ALL PRE-CONSTRUCTION MEETINGS.
- ANY KNOWN DISCREPANCIES ON THIS PLAN SET MUST BE BROUGHT TO THE ATTENTION OF HR GREEN, INC. PRIOR TO THE START OF CONSTRUCTION.

Dial 811 or 1-800-892-0123



Know what's below.
 Call before you dig.

WITH THE FOLLOWING:
 COUNTY KANE COUNTY
 CITY-TOWNSHIP KANE COUNTY-DUNDEE TOWNSHIP
 SEC. & 1/4 SEC. NO.# 15-42-8

Two (2) working days before you dig
 (Excluding Sat., Sun. & Holidays)

PRELIMINARY ENGINEERING
 NOT FOR CONSTRUCTION

DRAWN BY: DWS/MPL JOB DATE: 2013
 APPROVED: AJ JOB NUMBER: 86120178
 CAD DATE: 7/18/2013 3:59:10 PM
 CAD FILE: \\hrgmhnas\data\86120178\CAD\Dwgs\C\86120178-Cover.dwg

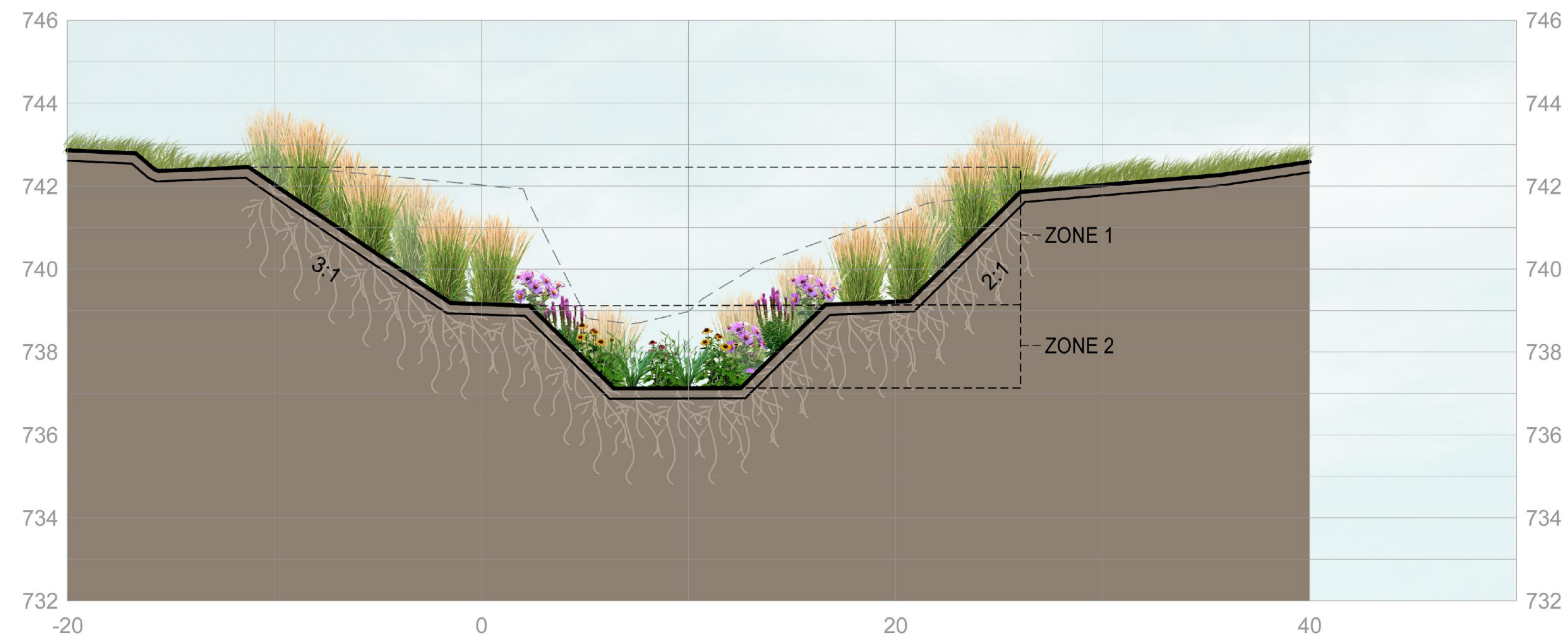
NO.	DATE	BY	REVISION DESCRIPTION
1	5/17/12	MPL	ADDENDUM #1

ILLINOIS DESIGN FIRM # 184.001322
 420 N. FRONT STREET, SUITE 100
 McHENRY, ILLINOIS 60050
 PHONE: 815.385.1778 | TOLL FREE: 800.728.7805
 FAX: 815.385.1781 | HRGreen.com

CARPENTER CREEK REALIGNMENT PROJECT
 VILLAGE OF CARPENTERSVILLE
 KANE COUNTY, IL

CIVIL
 COVER SHEET

SHEET NO.
 C-01

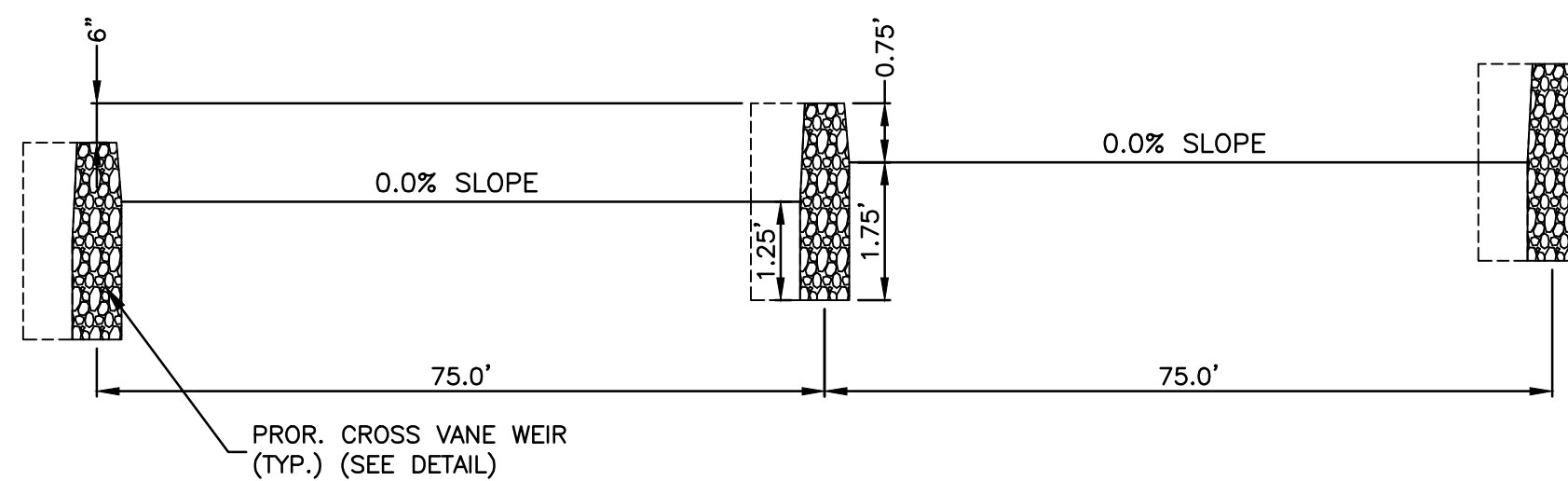


ALL SLOPES TO RECEIVE EROSION CONTROL TREATMENTS

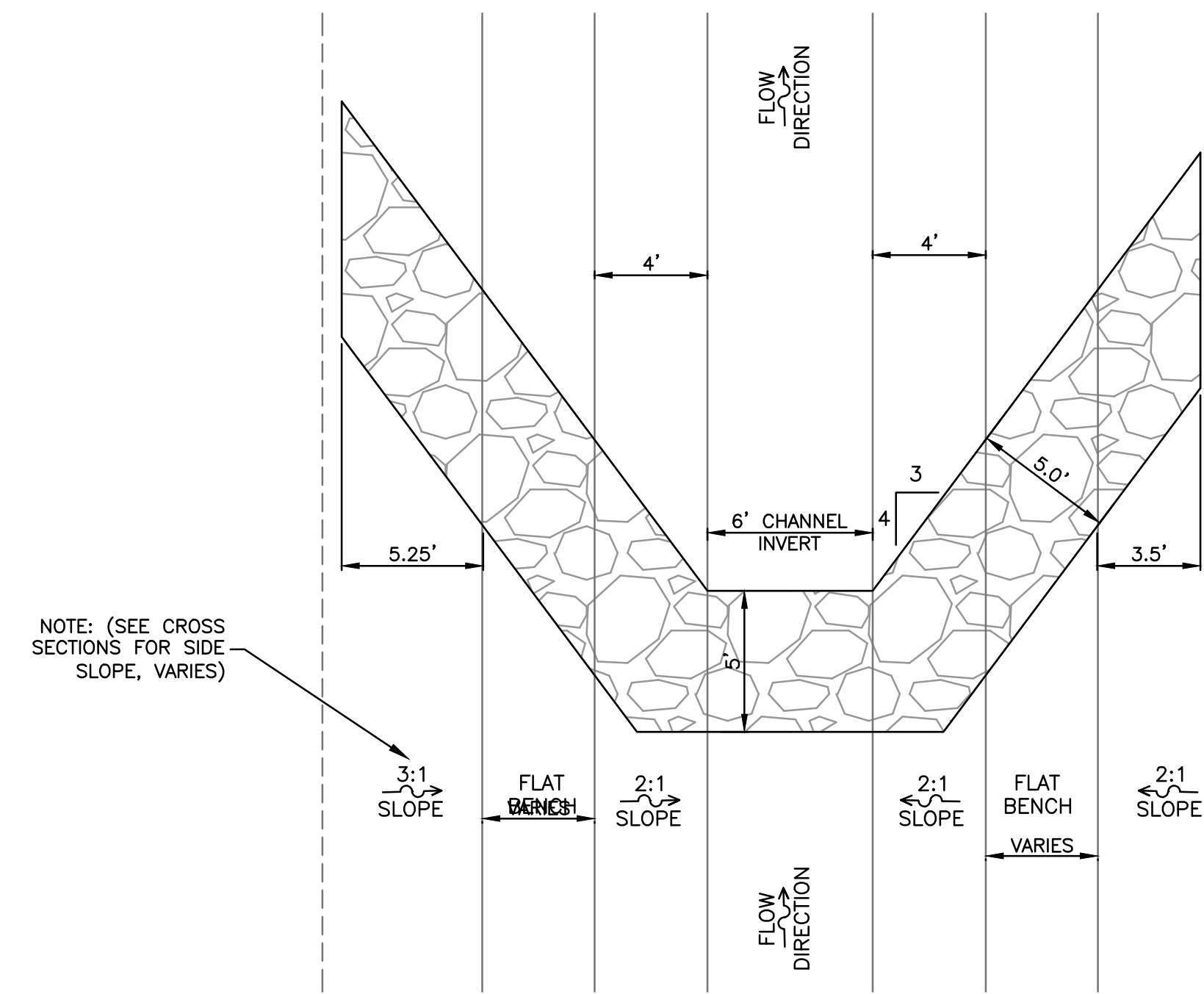
ZONE 1: LOW-PROFILE PRAIRIE SEED MIX
 ZONE 2: SWALE SEED MIX

1 PLANTING CROSS SECTION
 SCALE: N.T.S.

2 PLANTING SCHEDULE
 SCALE: N.T.S.

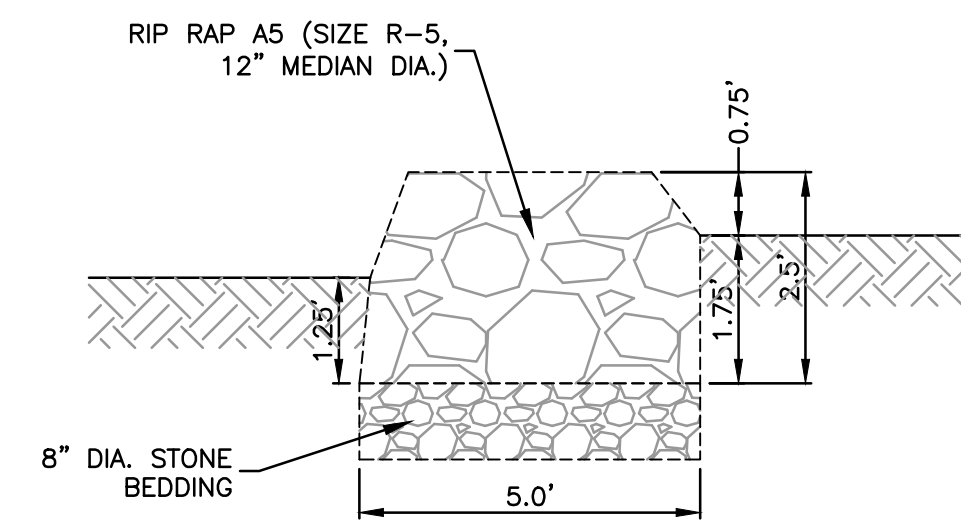


3 STREAM PROFILE
 SCALE: N.T.S.

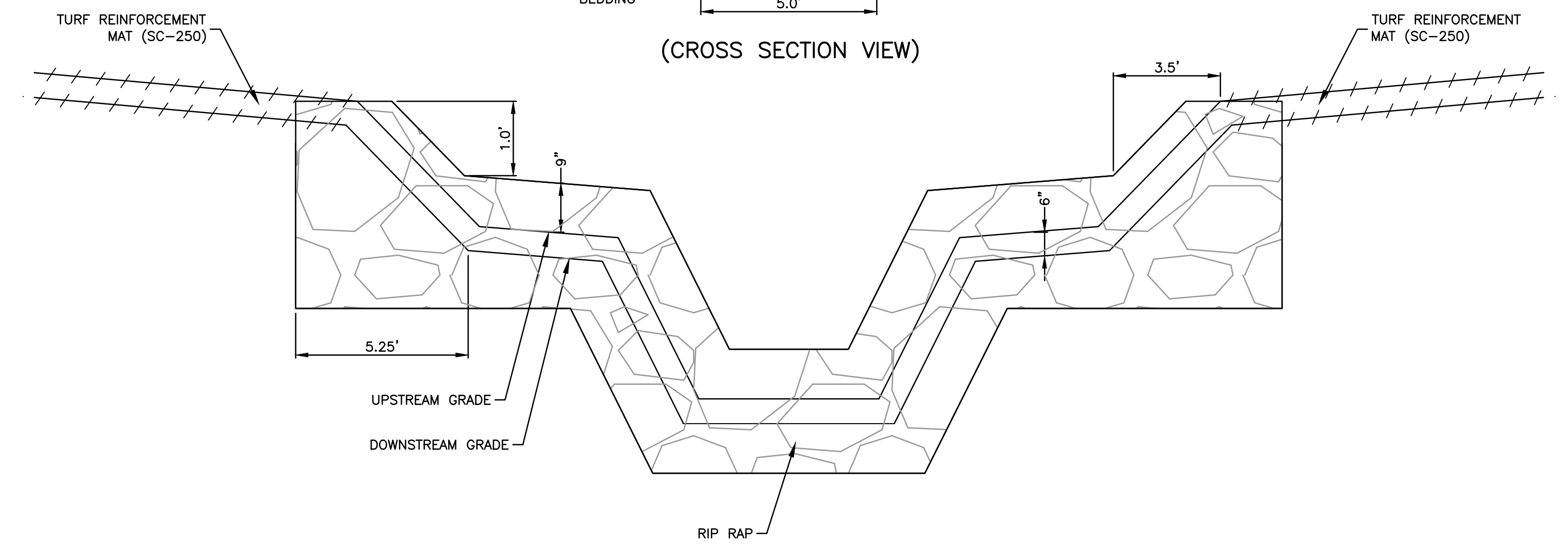


NOTE: (SEE CROSS SECTIONS FOR SIDE SLOPE, VARIES)

4 CROSS VANE WEIR (PLAN)
 SCALE: N.T.S.



(CROSS SECTION VIEW)



5 CROSS VANE WEIR (PROFILE)
 SCALE: N.T.S.

PRELIMINARY ENGINEERING
 NOT FOR CONSTRUCTION

DRAWN BY: DWS/MPL JOB DATE: 2013
 APPROVED: AJ JOB NUMBER: 86120178
 CAD DATE: 7/19/2013 1:03:52 PM
 CAD FILE: \\hrgmhnas\data\86120178\CAD\Dwgs\C\86120178-Typical_Sections.dwg

BAR IS ONE INCH ON
 OFFICIAL DRAWINGS.
 IF NOT ONE INCH,
 ADJUST SCALE ACCORDINGLY.

NO.	DATE	BY	REVISION DESCRIPTION



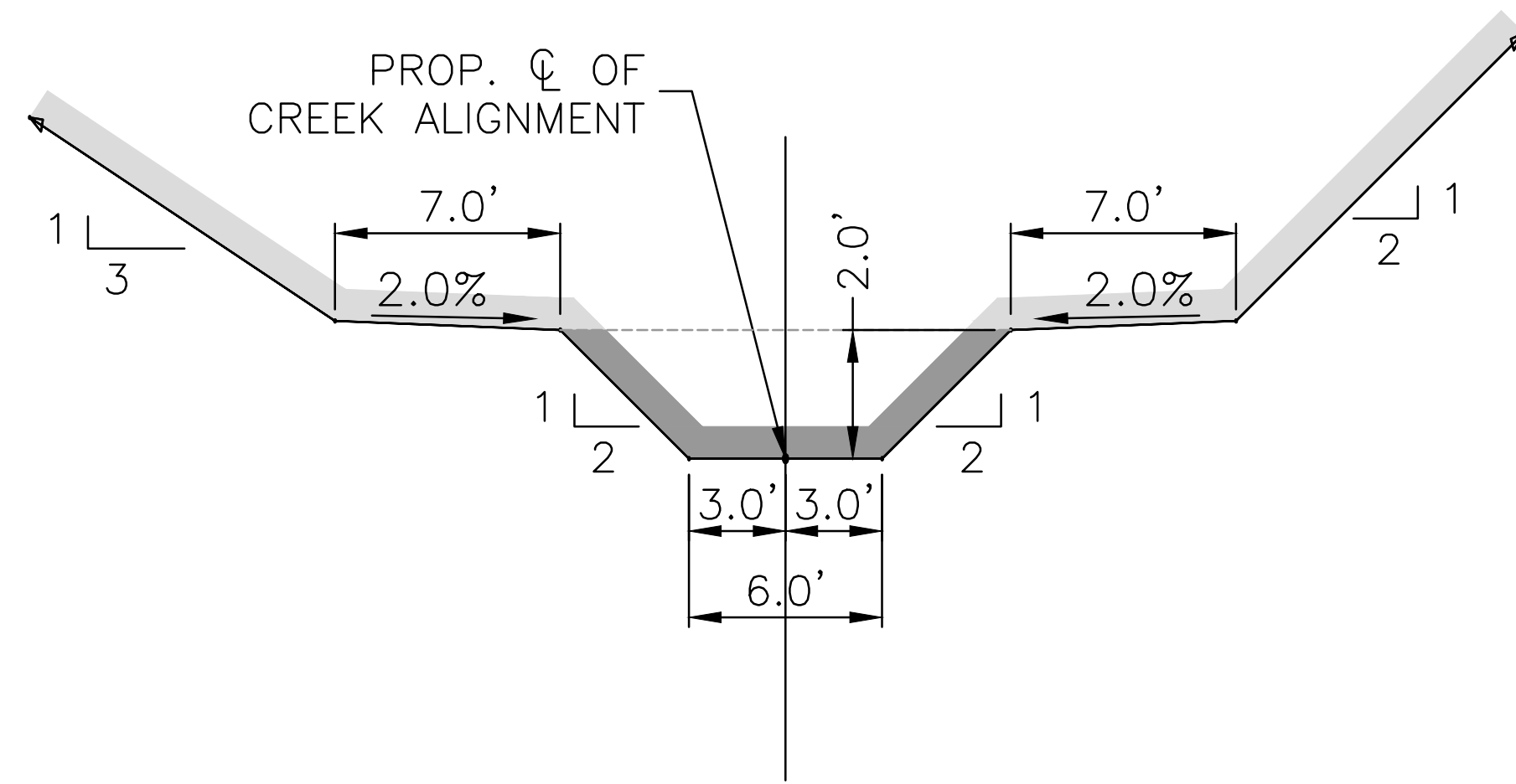
ILLINOIS DESIGN FIRM # 184.001322
 420 N. FRONT STREET, SUITE 100
 McHENRY, ILLINOIS 60050
 PHONE: 815.385.1778 | TOLL FREE: 800.728.7805
 FAX: 815.385.1781 | HRGreen.com

CARPENTER CREEK REALIGNMENT PROJECT
 VILLAGE OF CARPENTERSVILLE
 KANE COUNTY, IL

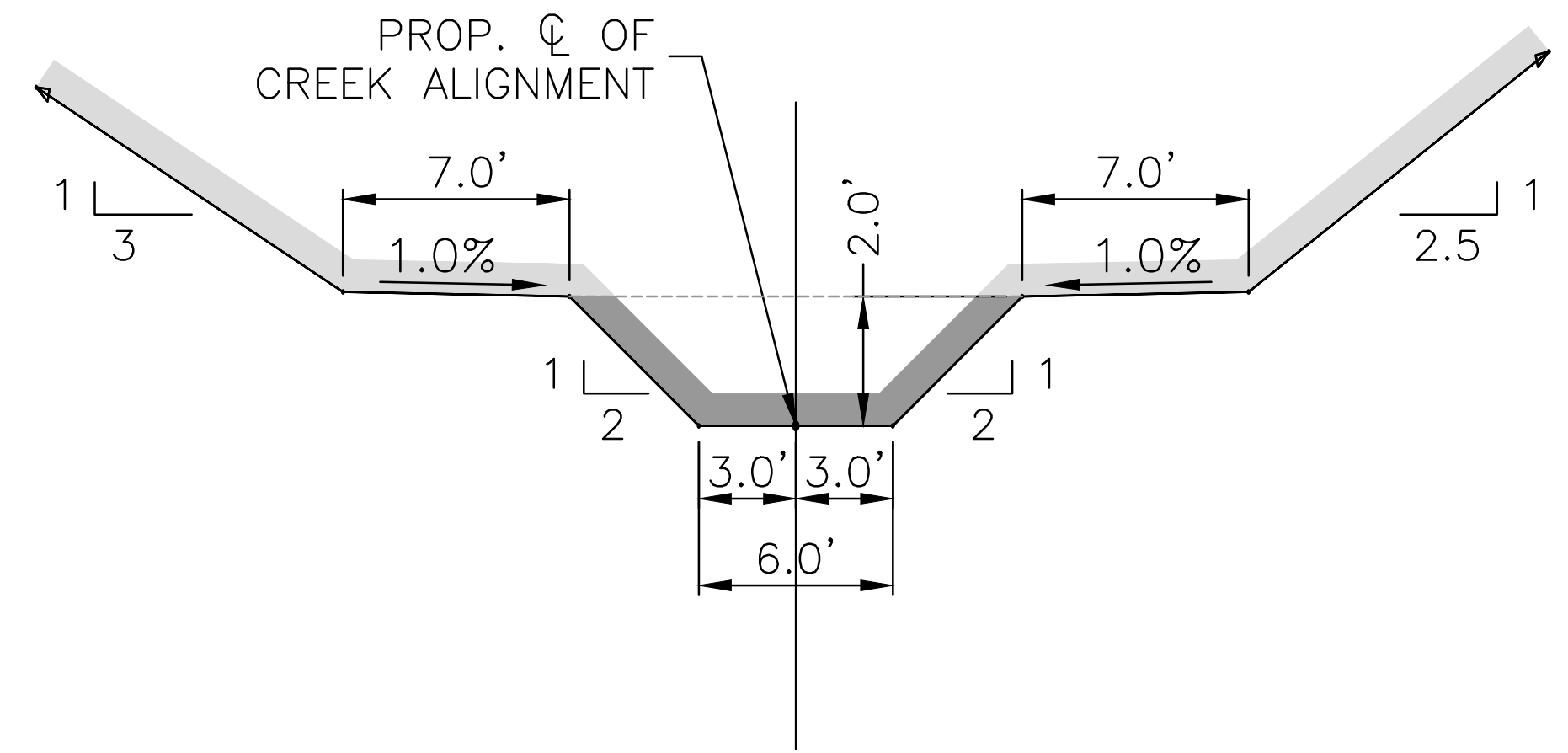
CIVIL
 STORMWATER BEST MANAGEMENT PRACTICES
 (BMP) DETAILS

SHEET NO.
 C-02

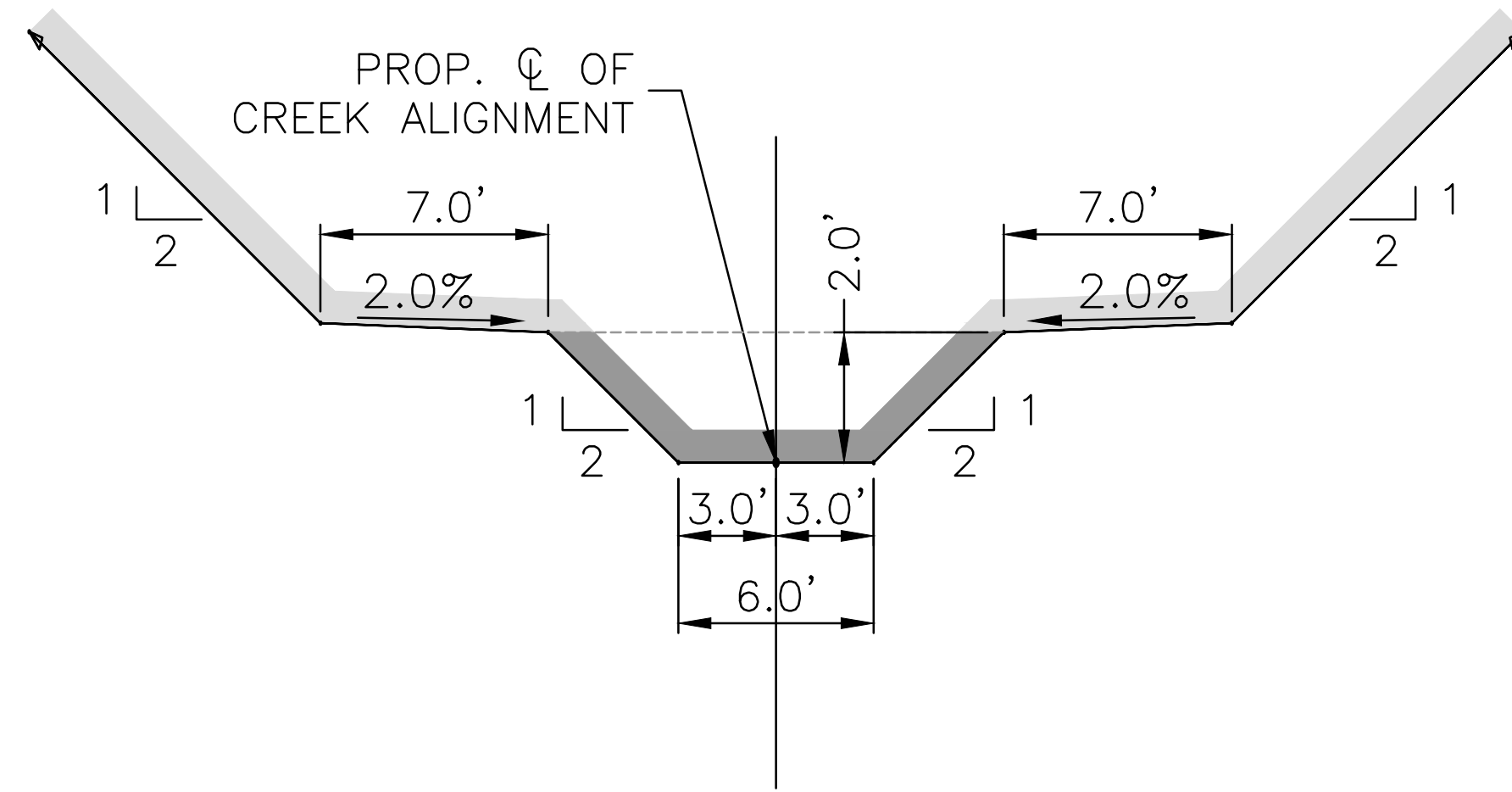
Xref: xc-prof; xgt-1-dn01



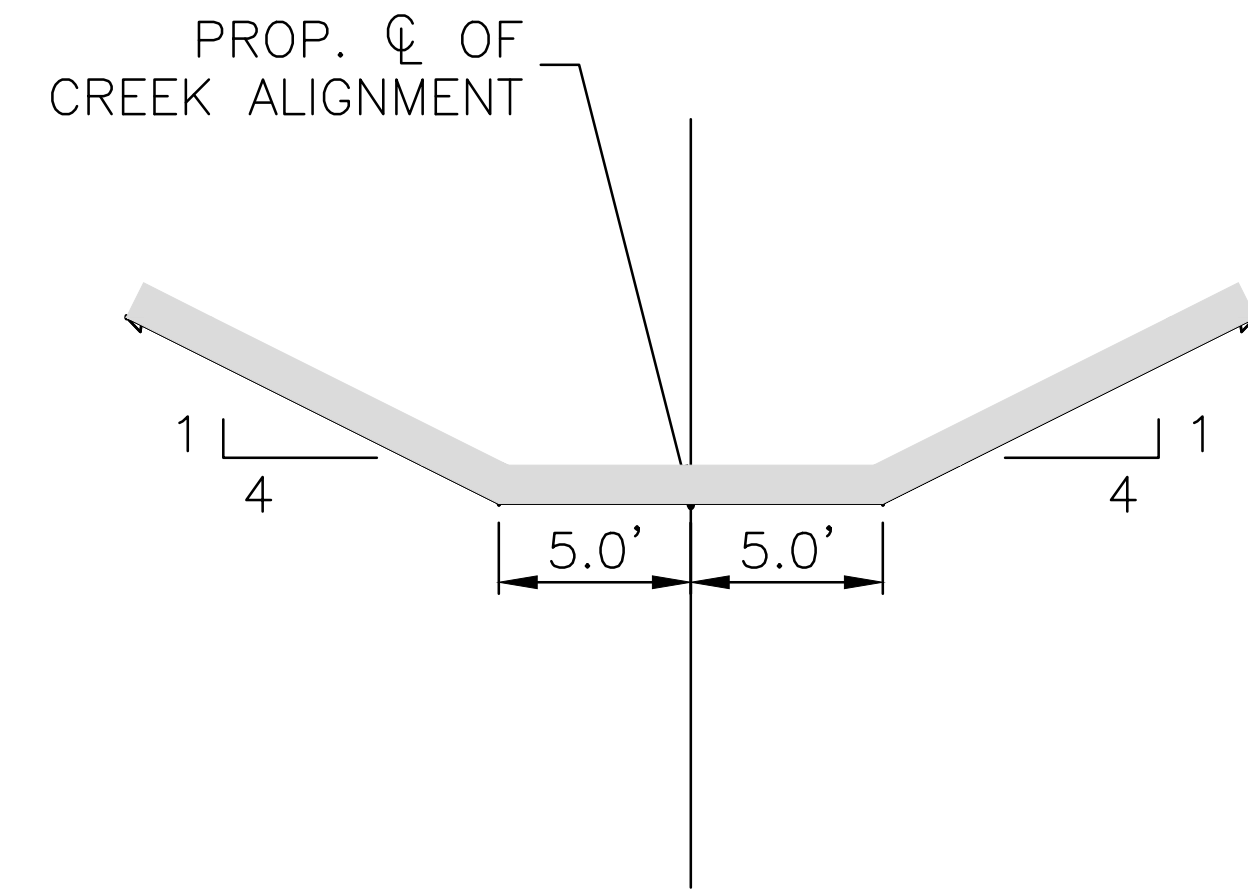
1
MAIN CREEK CHANNEL
STA. 100+80 TO STA. 109+55
SCALE: N.T.S.



3
MAIN CREEK CHANNEL
STA. 113+27 TO STA. 119+67
SCALE: N.T.S.



2
MAIN CREEK CHANNEL
STA. 109+55 TO STA. 113+27
SCALE: N.T.S.



4
BYPASS CHANNEL
STA. 200+50 TO STA. 207+50
SCALE: N.T.S.


ZONE 1 PLANTINGS
 ZONE 2 PLANTINGS

PRELIMINARY ENGINEERING
NOT FOR CONSTRUCTION

DRAWN BY: DWS/MPL JOB DATE: 2013
 APPROVED: AJ JOB NUMBER: 86120178
 CAD DATE: 7/19/2013 1:03:52 PM
 CAD FILE: \\hrgmhnas\data\86120178\CAD\Dwgs\C\86120178-Typical_Sections.dwg

BAR IS ONE INCH ON
 OFFICIAL DRAWINGS.
 0" = 1"
 IF NOT ONE INCH,
 ADJUST SCALE ACCORDINGLY.

NO.	DATE	BY	REVISION DESCRIPTION


 ILLINOIS DESIGN FIRM # 184.001322
 420 N. FRONT STREET, SUITE 100
 McHENRY, ILLINOIS 60050
 PHONE: 815.385.1778 | TOLL FREE: 800.728.7805
 FAX: 815.385.1781 | HRGreen.com

CARPENTER CREEK REALIGNMENT PROJECT
VILLAGE OF CARPENTERSVILLE
KANE COUNTY, IL

CIVIL
TYPICAL SECTIONS

SHEET NO.
C-03



PRELIMINARY ENGINEERING
NOT FOR CONSTRUCTION

DRAWN BY: DWS/MPL JOB DATE: 2013
 APPROVED: AJ JOB NUMBER: 86120178
 CAD DATE: 7/31/2013 12:04:54 PM
 CAD FILE: \\hrgmhnas\data\86120178\CAD\Dwgs\C\86120178-Overall.dwg

BAR IS ONE INCH ON
OFFICIAL DRAWINGS.
0" = 100'

IF NOT ONE INCH,
ADJUST SCALE ACCORDINGLY.









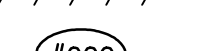

NO.	DATE	BY	REVISION DESCRIPTION

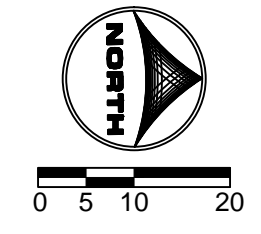
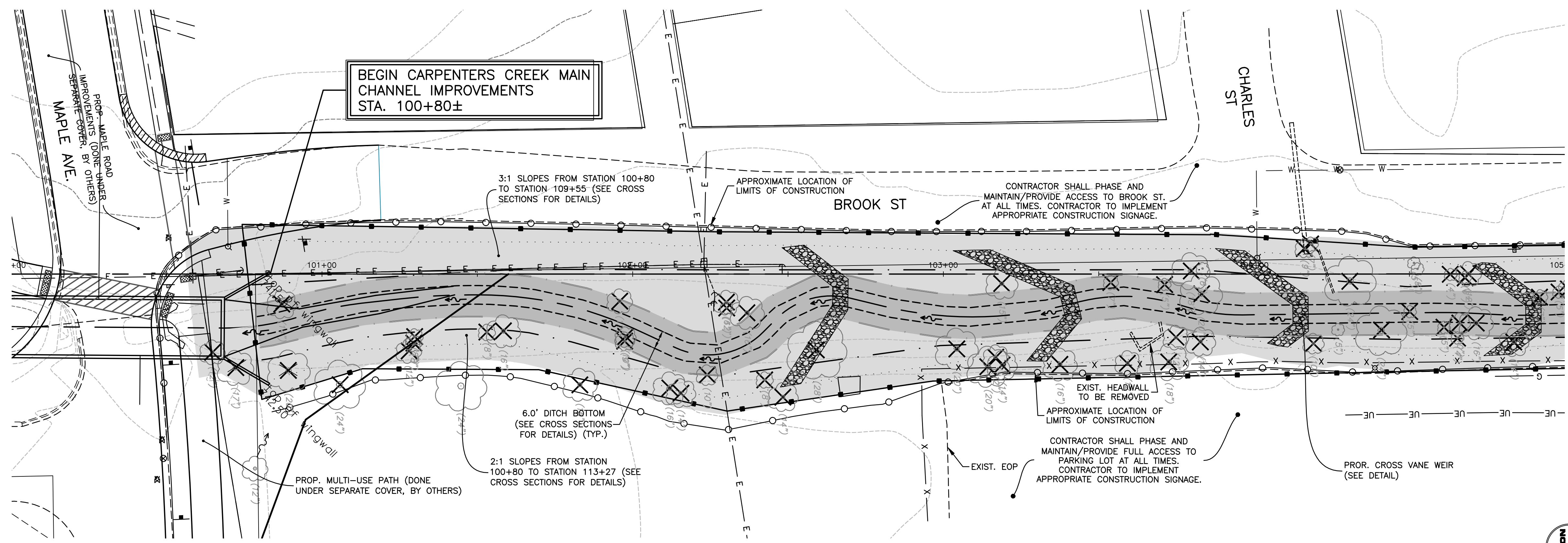
HRGreen
 ILLINOIS DESIGN FIRM # 184.001322
 420 N. FRONT STREET, SUITE 100
 McHENRY, ILLINOIS 60050
 PHONE: 815.385.1778 | TOLL FREE: 800.728.7805
 FAX: 815.385.1781 | HRGreen.com

CARPENTER CREEK REALIGNMENT PROJECT
VILLAGE OF CARPENTERSVILLE
KANE COUNTY, IL

CIVIL
OVERALL PLAN LAYOUT

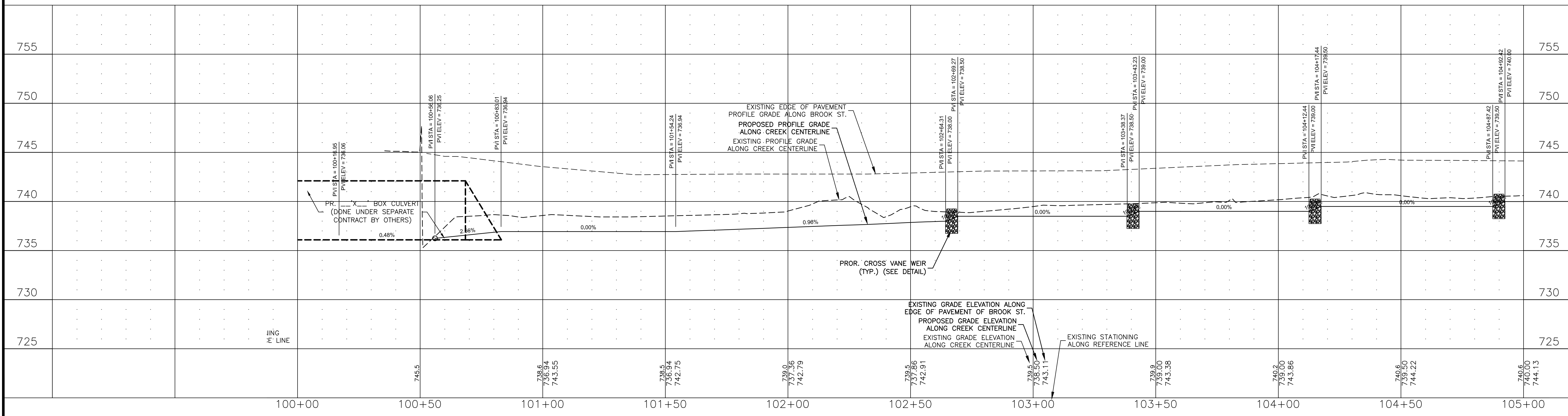
SHEET NO.
C-04

- PROJECT NOTES:**
-  INDICATES ZONE 1 PLANTINGS
 -  INDICATES ZONE 2 PLANTINGS
 -  INDICATES RIP RAP VANE WEIR
 -  INDICATES WETLAND ENHANCEMENT AREA
 -  DENOTES EROSION CONTROL FENCE (SEE SPECIFIED SHEET FOR DETAILS.)
 -  DENOTES INLET FILTER BASKET
 -  INDICATES TREE AND BRUSH REMOVAL (SEE SHEET FOR SIZE AND QUANTITY)
 -  INDICATES TREE TRUNK & ROOT PROTECTION
 -  INDICATES PIPE REMOVAL
 -  ADDRESS
- ALL GRADING: SHALL BE CONSIDERED INCLUDED IN THE COST OF WATERMAIN CONSTRUCTION. GRADING ARROWS REPRESENT PROPOSED GRADING PATTERN 1% MIN. SLOPE.



NOTE:

**PRELIMINARY ENGINEERING
NOT FOR CONSTRUCTION**



DRAWN BY: DWS/MPL JOB DATE: 2013
 APPROVED: AJ JOB NUMBER: 86120178
 CAD DATE: 7/19/2013 12:43:03 PM
 CAD FILE: \\hrgmhdns\data\86120178\CAD\Dwgs\C\86120178-PnP-Main_Channel.dwg

BAR IS ONE INCH ON OFFICIAL DRAWINGS.
 IF NOT ONE INCH, ADJUST SCALE ACCORDINGLY.

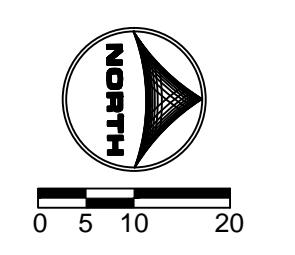
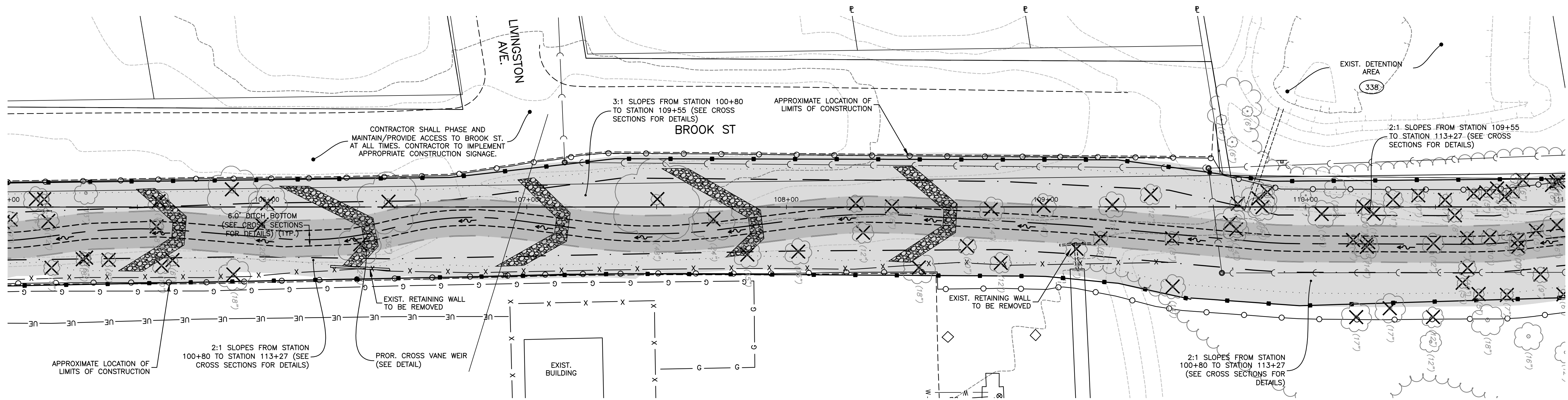
NO.	DATE	BY	REVISION DESCRIPTION

HRGreen
 ILLINOIS DESIGN FIRM # 184-001322
 420 N. FRONT STREET, SUITE 100
 McHENRY, ILLINOIS 60050
 PHONE: 815.385.1778 | TOLL FREE: 800.728.7805
 FAX: 815.385.1781 | HRGreen.com

CARPENTER CREEK REALIGNMENT PROJECT
VILLAGE OF CARPENTERSVILLE
KANE COUNTY, IL

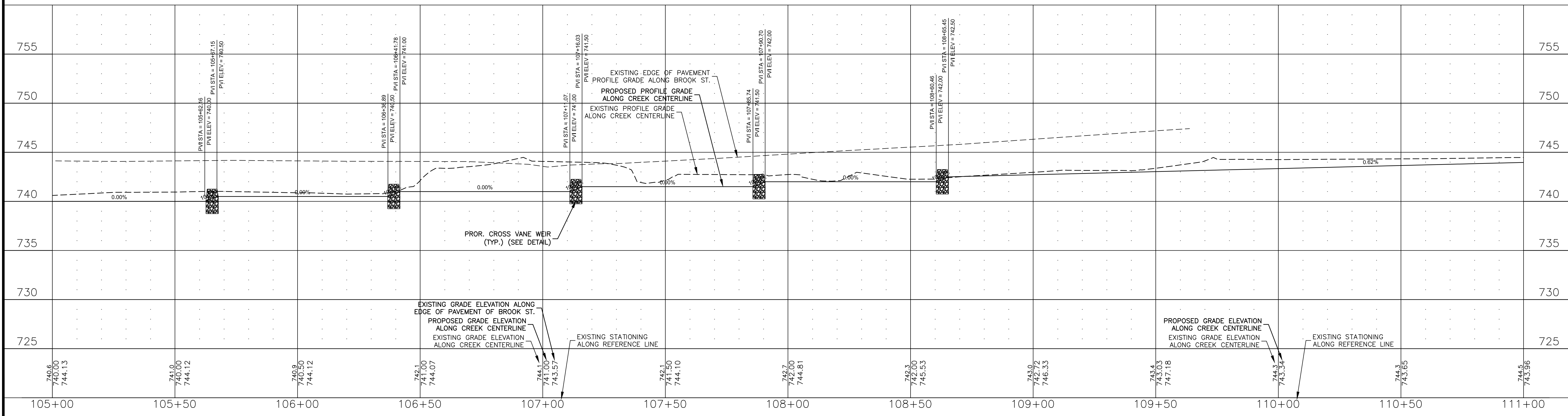
CIVIL
PLAN AND PROFILE, STA. 100+00 TO STA. 105+00

SHEET NO.
C-05



NOTE:

PRELIMINARY ENGINEERING
NOT FOR CONSTRUCTION



DRAWN BY: DWS/MPL JOB DATE: 2013
 APPROVED: AJ JOB NUMBER: 86120178
 CAD DATE: 7/19/2013 12:43:03 PM
 CAD FILE: \\hrgmhnas\data\86120178\CAD\Dwgs\C\86120178-PnP-Main_Channel.dwg

BAR IS ONE INCH ON
OFFICIAL DRAWINGS. 1" = 10'

IF NOT ONE INCH,
ADJUST SCALE ACCORDINGLY.

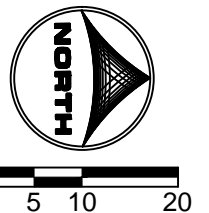
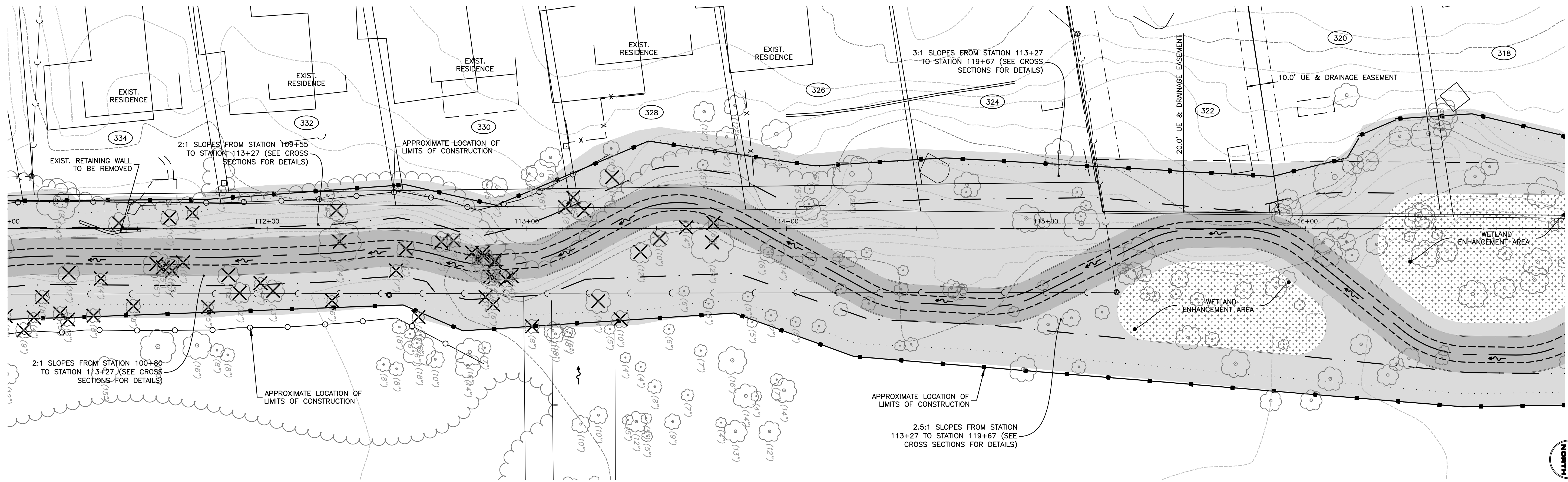
NO.	DATE	BY	REVISION DESCRIPTION

ILLINOIS DESIGN FIRM # 184.001322
 420 N. FRONT STREET, SUITE 100
 McHENRY, ILLINOIS 60050
 PHONE: 815.385.1778 | TOLL FREE: 800.728.7805
 FAX: 815.385.1781 | HRGreen.com

CARPENTER CREEK REALIGNMENT PROJECT
VILLAGE OF CARPENTERSVILLE
KANE COUNTY, IL

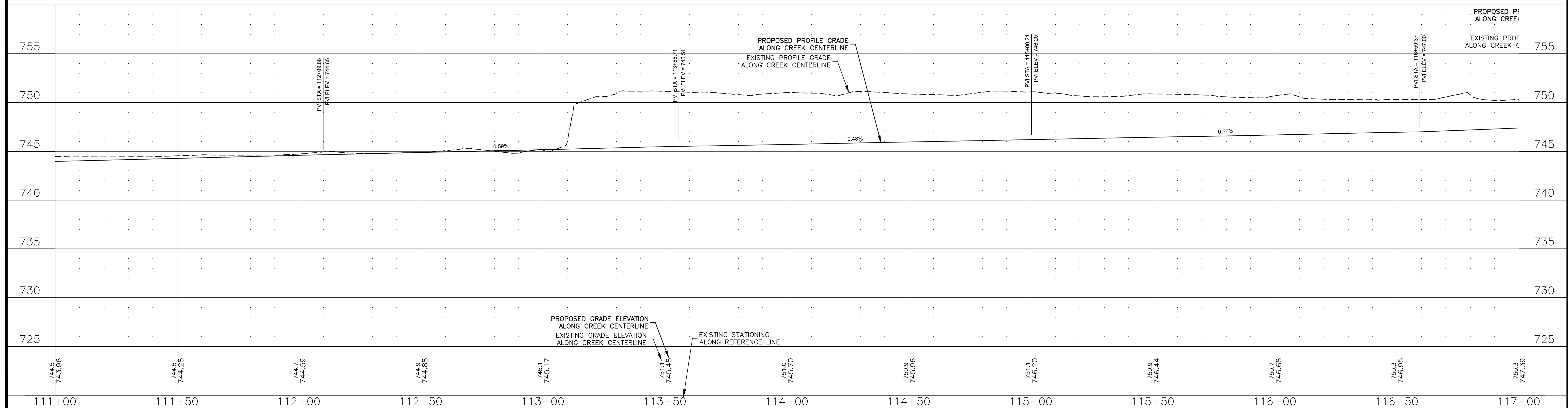
CIVIL
 PLAN AND PROFILE, STA. 105+00 TO STA. 111+00

SHEET NO.
C-06



NOTE:

PRELIMINARY ENGINEERING
NOT FOR CONSTRUCTION



DRAWN BY: DWS/MPL JOB DATE: 2013
 APPROVED: AJ JOB NUMBER: 86120178
 CAD DATE: 7/19/2013 12:43:03 PM
 CAD FILE: \\hrgmhdas\data\86120178\CAD\Dwgs\C\86120178-PnP-Main_Channel.dwg

BAR IS ONE INCH ON OFFICIAL DRAWINGS.
 IF NOT ONE INCH, ADJUST SCALE ACCORDINGLY.

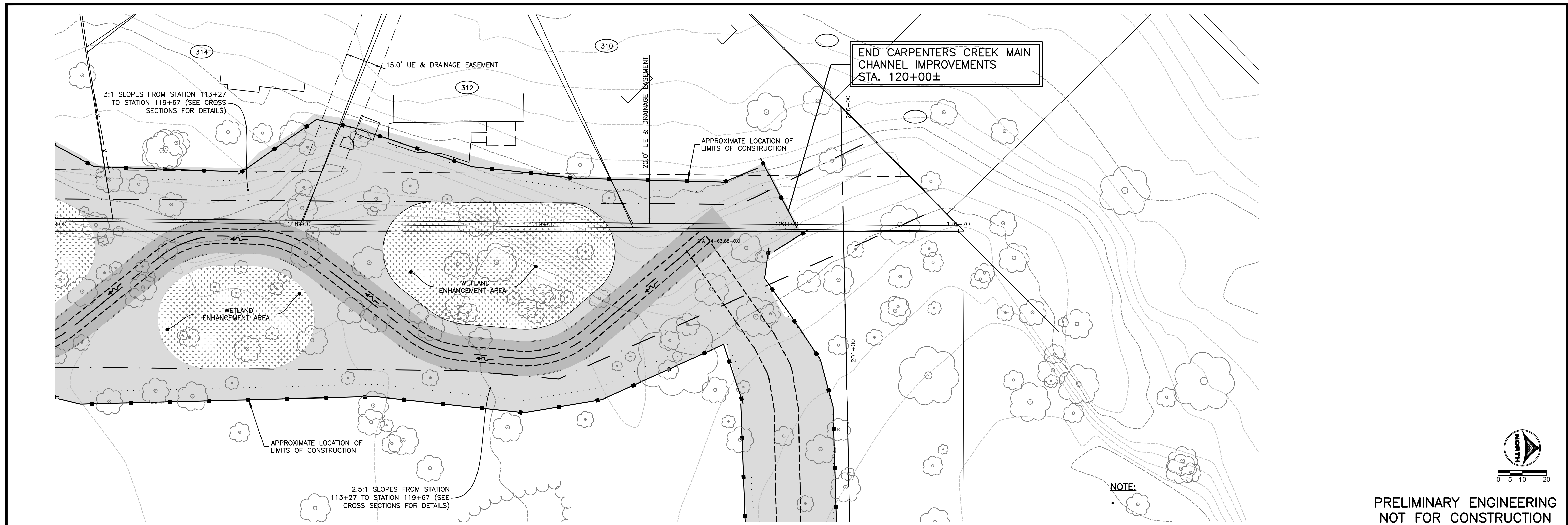
NO.	DATE	BY	REVISION DESCRIPTION

HRGreen
 ILLINOIS DESIGN FIRM # 184.001322
 420 N. FRONT STREET, SUITE 100
 McHENRY, ILLINOIS 60050
 PHONE: 815.385.1778 | TOLL FREE: 800.728.7805
 FAX: 815.385.1781 | HRGreen.com

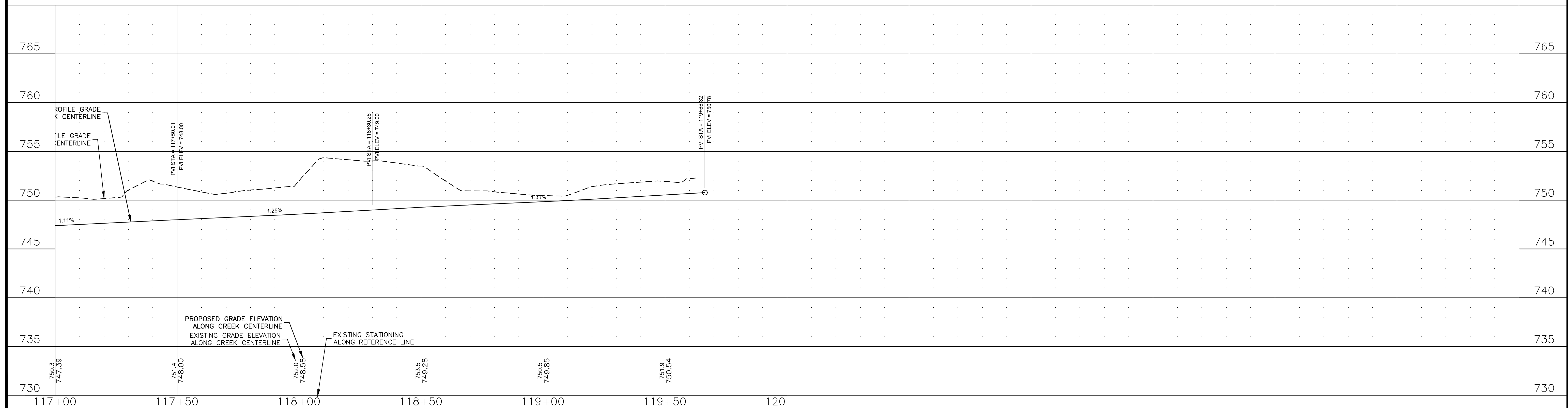
CARPENTERS CREEK REALIGNMENT PROJECT
VILLAGE OF CARPENTERSVILLE
KANE COUNTY, IL

CIVIL
 PLAN AND PROFILE, STA. 111+00 TO STA. 117+00

SHEET NO.
C-07



PRELIMINARY ENGINEERING
NOT FOR CONSTRUCTION



DRAWN BY: DWS/MPL JOB DATE: 2013
 APPROVED: AJ JOB NUMBER: 86120178
 CAD DATE: 7/19/2013 12:43:03 PM
 CAD FILE: \\hrgm\hrgas\data\86120178\CAD\Dwgs\C\86120178-PnP-Main_Channel.dwg

NO.	DATE	BY	REVISION DESCRIPTION









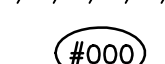

HRGreen
 ILLINOIS DESIGN FIRM # 184.001322
 420 N. FRONT STREET, SUITE 100
 McHENRY, ILLINOIS 60050
 PHONE: 815.385.1778 | TOLL FREE: 800.728.7805
 FAX: 815.385.1781 | HRGreen.com


CARPENTER CREEK REALIGNMENT PROJECT
VILLAGE OF CARPENTERSVILLE
KANE COUNTY, IL

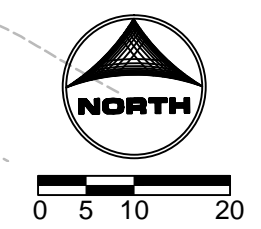
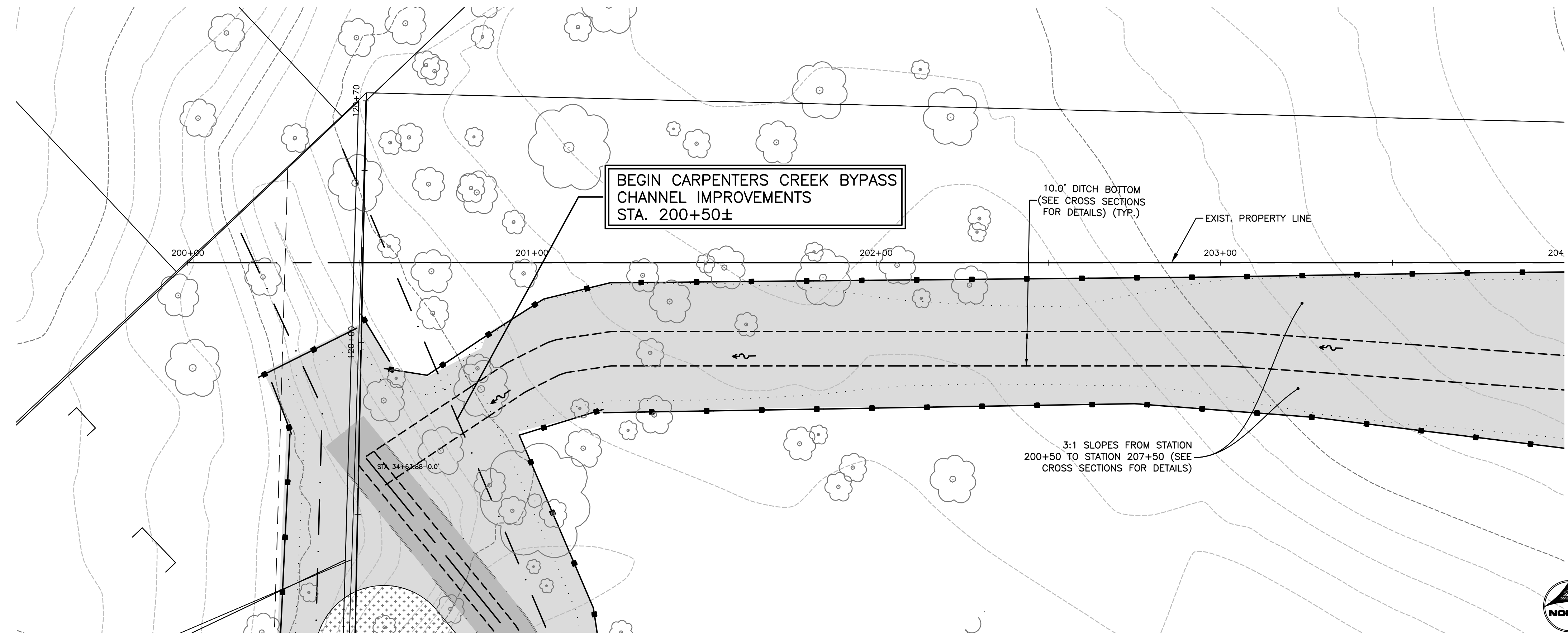
CIVIL
 PLAN AND PROFILE, STA. 117+00 TO STA.
 121+00

SHEET NO. 725
C-08

PROJECT NOTES:

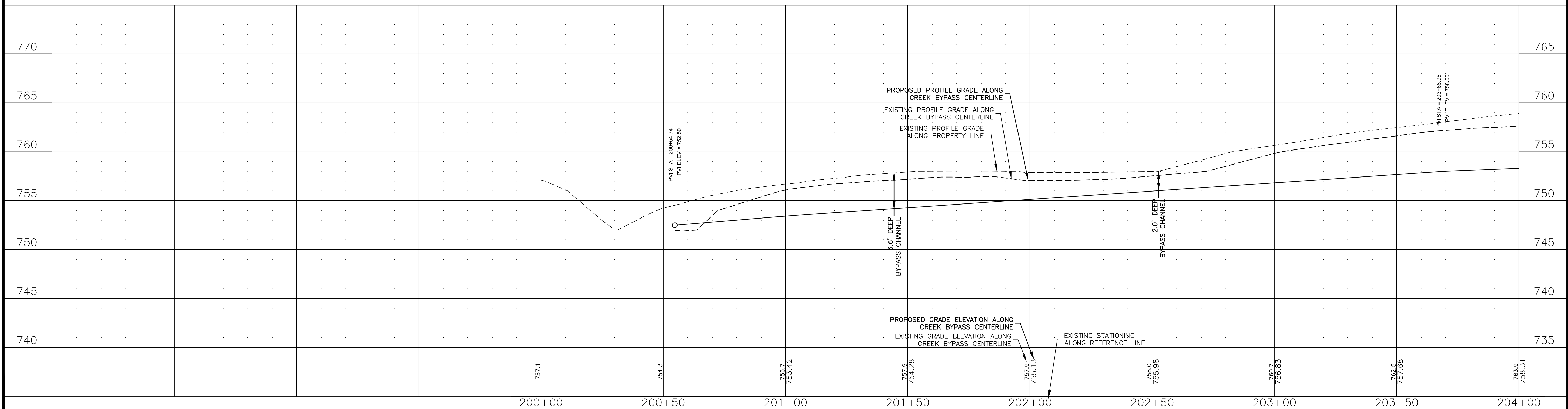
-  INDICATES ZONE 1 PLANTINGS
-  INDICATES ZONE 2 PLANTINGS
-  INDICATES RIP RAP VANE WEIR
-  INDICATES WETLAND ENHANCEMENT AREA
-  DENOTES EROSION CONTROL FENCE (SEE SPECIFIED SHEET FOR DETAILS.)
-  DENOTES INLET FILTER BASKET
-  INDICATES TREE AND BRUSH REMOVAL (SEE SHEET FOR SIZE AND QUANTITY)
-  INDICATES TREE TRUNK & ROOT PROTECTION
-  INDICATES PIPE REMOVAL
-  ADDRESS

ALL GRADING SHALL BE CONSIDERED INCLUDED IN THE COST OF WATERMAIN CONSTRUCTION. GRADING ARROWS  REPRESENT PROPOSED GRADING PATTERN 1% MIN. SLOPE.



NOTE:

PRELIMINARY ENGINEERING
NOT FOR CONSTRUCTION



DRAWN BY: DWS/MPL JOB DATE: 2013
 APPROVED: AJ JOB NUMBER: 86120178
 CAD DATE: 7/19/2013 1:02:51 PM
 CAD FILE: \\hrgm\hrgm\data\86120178\CAD\Dwgs\C\86120178-PnP-Bypass-Channel.dwg

BAR IS ONE INCH ON OFFICIAL DRAWINGS.
 IF NOT ONE INCH, ADJUST SCALE ACCORDINGLY.

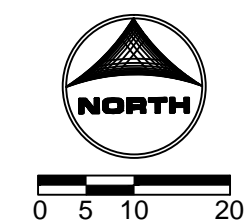
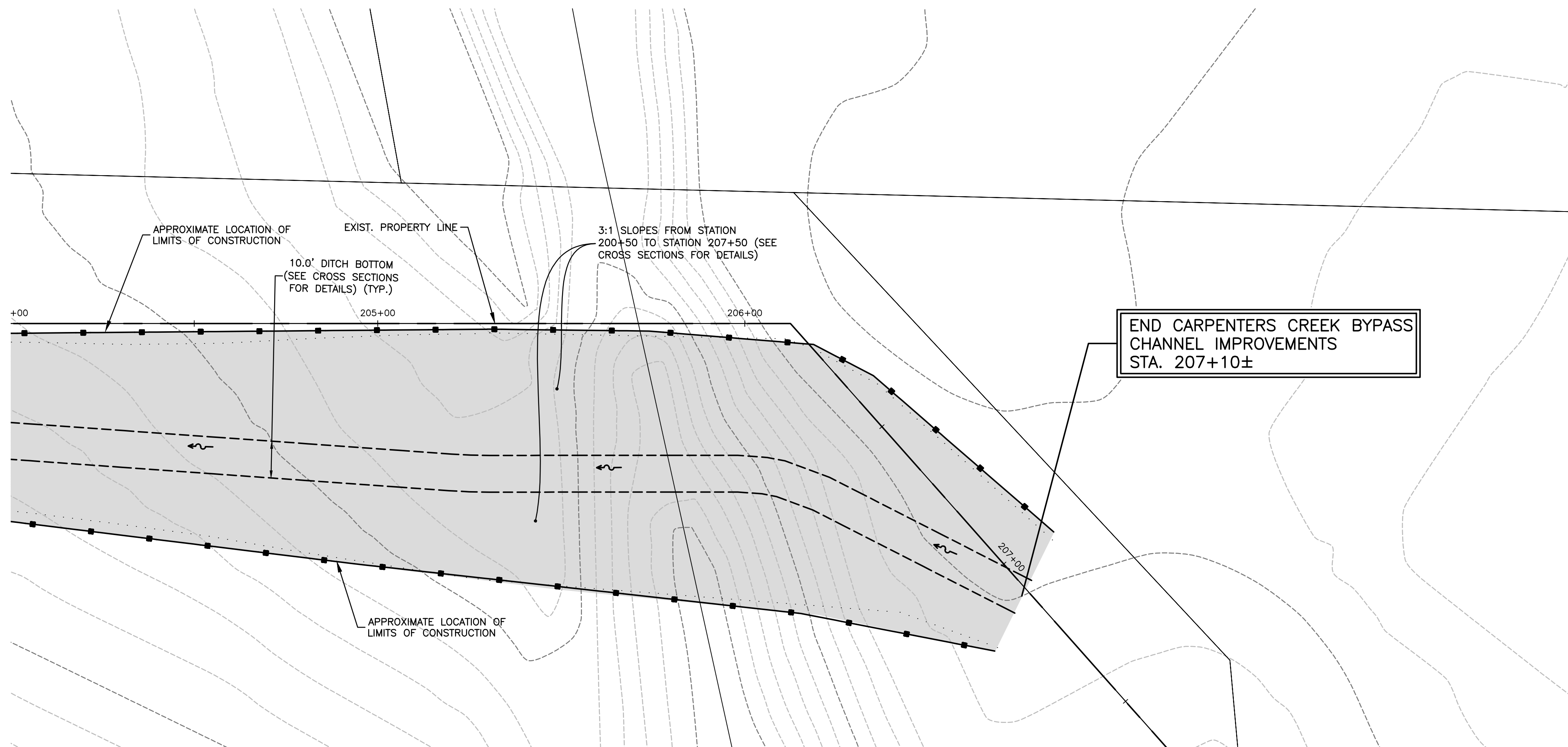
NO.	DATE	BY	REVISION DESCRIPTION

HRGreen
 ILLINOIS DESIGN FIRM # 184.001322
 420 N. FRONT STREET, SUITE 100
 McHENRY, ILLINOIS 60050
 PHONE: 815.385.1778 | TOLL FREE: 800.728.7805
 FAX: 815.385.1781 | HRGreen.com

CARPENTER CREEK REALIGNMENT PROJECT
VILLAGE OF CARPENTERSVILLE
KANE COUNTY, IL

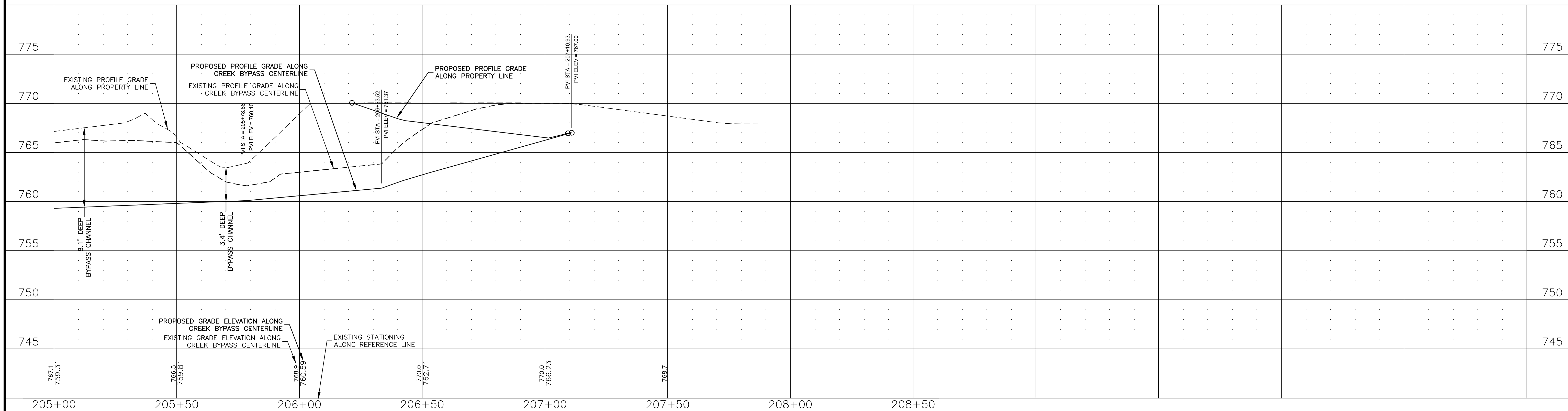
CIVIL
PLAN AND PROFILE, STA. 200+00 TO STA. 205+00

SHEET NO.
C-09



NOTE:

PRELIMINARY ENGINEERING
NOT FOR CONSTRUCTION



DRAWN BY: DWS/MPL JOB DATE: 2013
 APPROVED: AJ JOB NUMBER: 86120178
 CAD DATE: 7/19/2013 1:02:51 PM
 CAD FILE: \\hrgmhdas\data\86120178\CAD\Dwgs\C\86120178-PnP-Bypass-Channel.dwg

BAR IS ONE INCH ON
OFFICIAL DRAWINGS: 1" = 10'

IF NOT ONE INCH,
ADJUST SCALE ACCORDINGLY.

NO.	DATE	BY	REVISION DESCRIPTION

HRGreen
 ILLINOIS DESIGN FIRM # 184.001322
 420 N. FRONT STREET, SUITE 100
 McHENRY, ILLINOIS 60050
 PHONE: 815.385.1778 | TOLL FREE: 800.728.7805
 FAX: 815.385.1781 | HRGreen.com

CARPENTER CREEK REALIGNMENT PROJECT
VILLAGE OF CARPENTERSVILLE
KANE COUNTY, IL

CIVIL
 PLAN AND PROFILE, STA. 205+00 TO STA.
 208+50

SHEET NO.
C-10