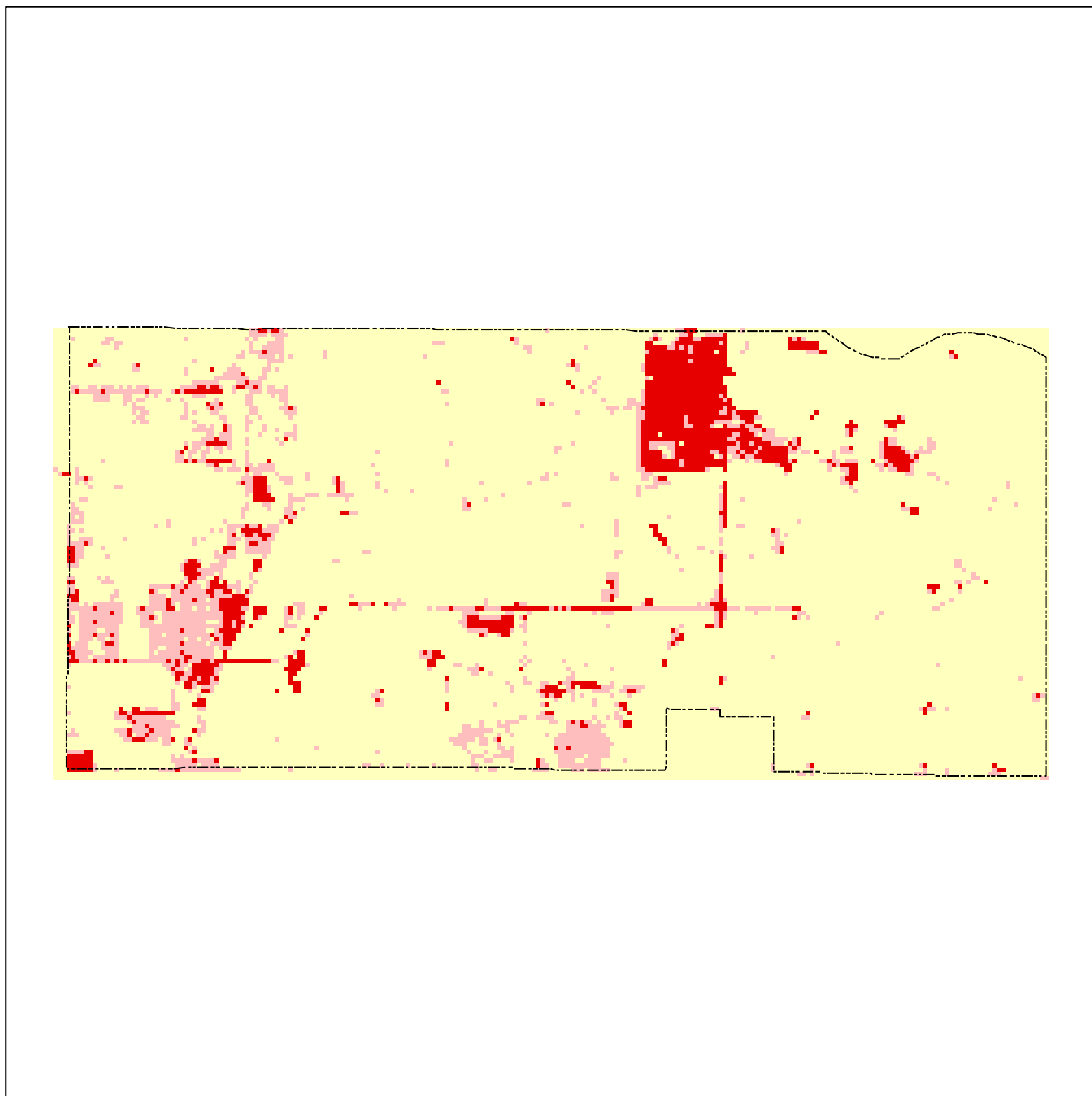
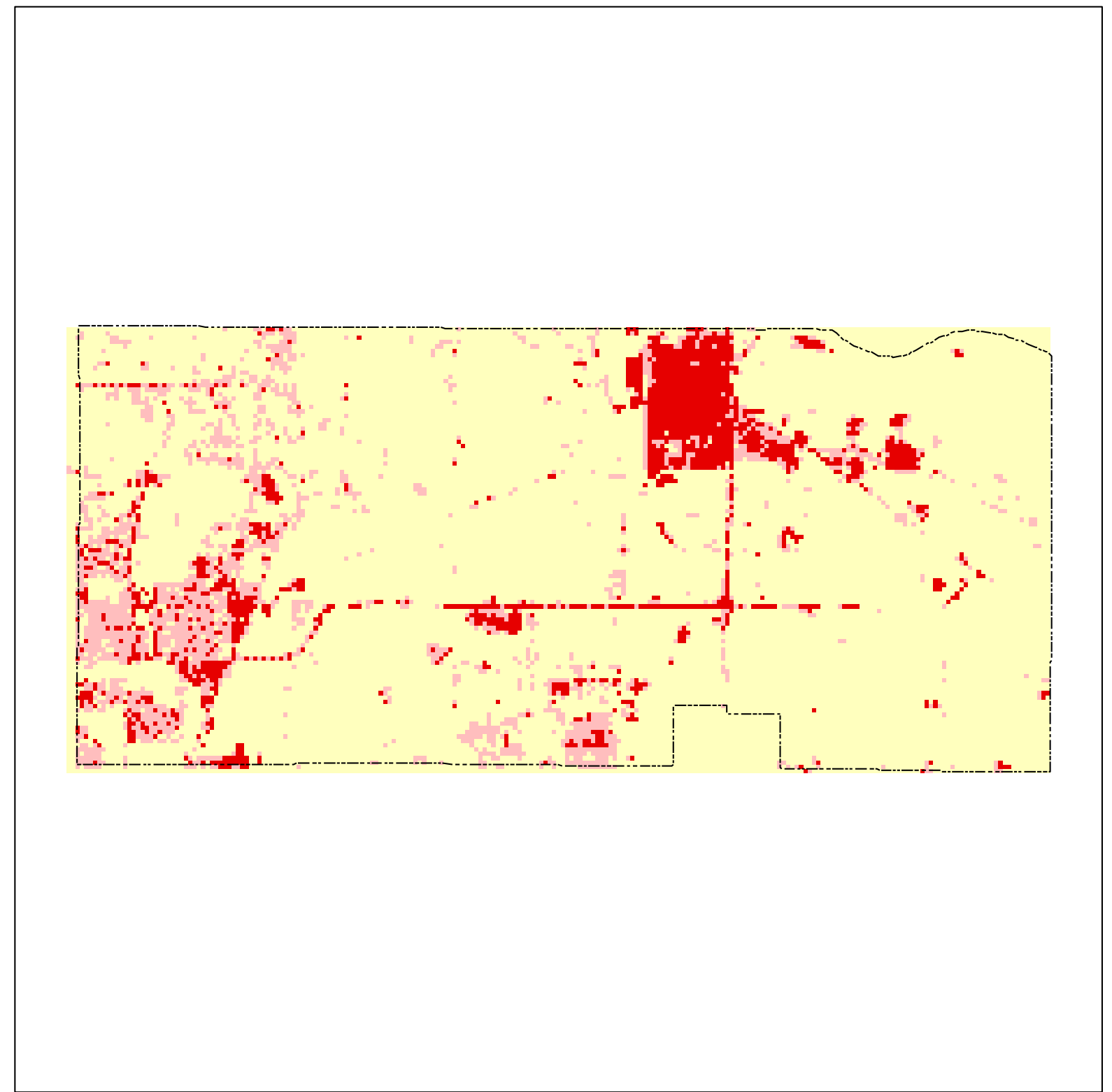


# City of Rosemount Impervious Coverage based on Satellite Remote Sensing

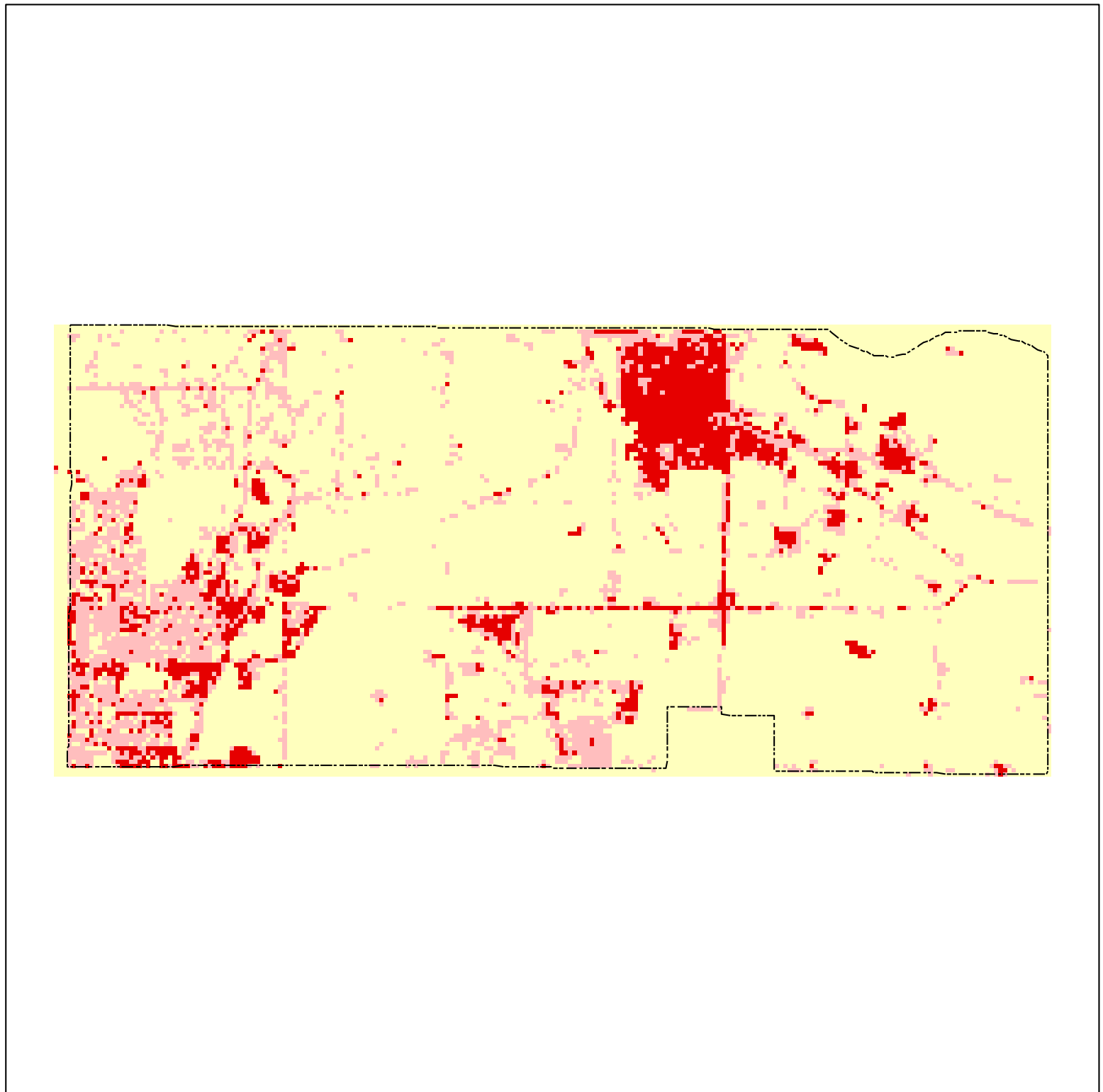
1986



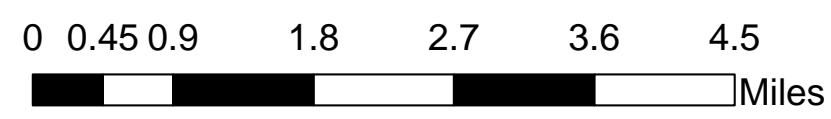
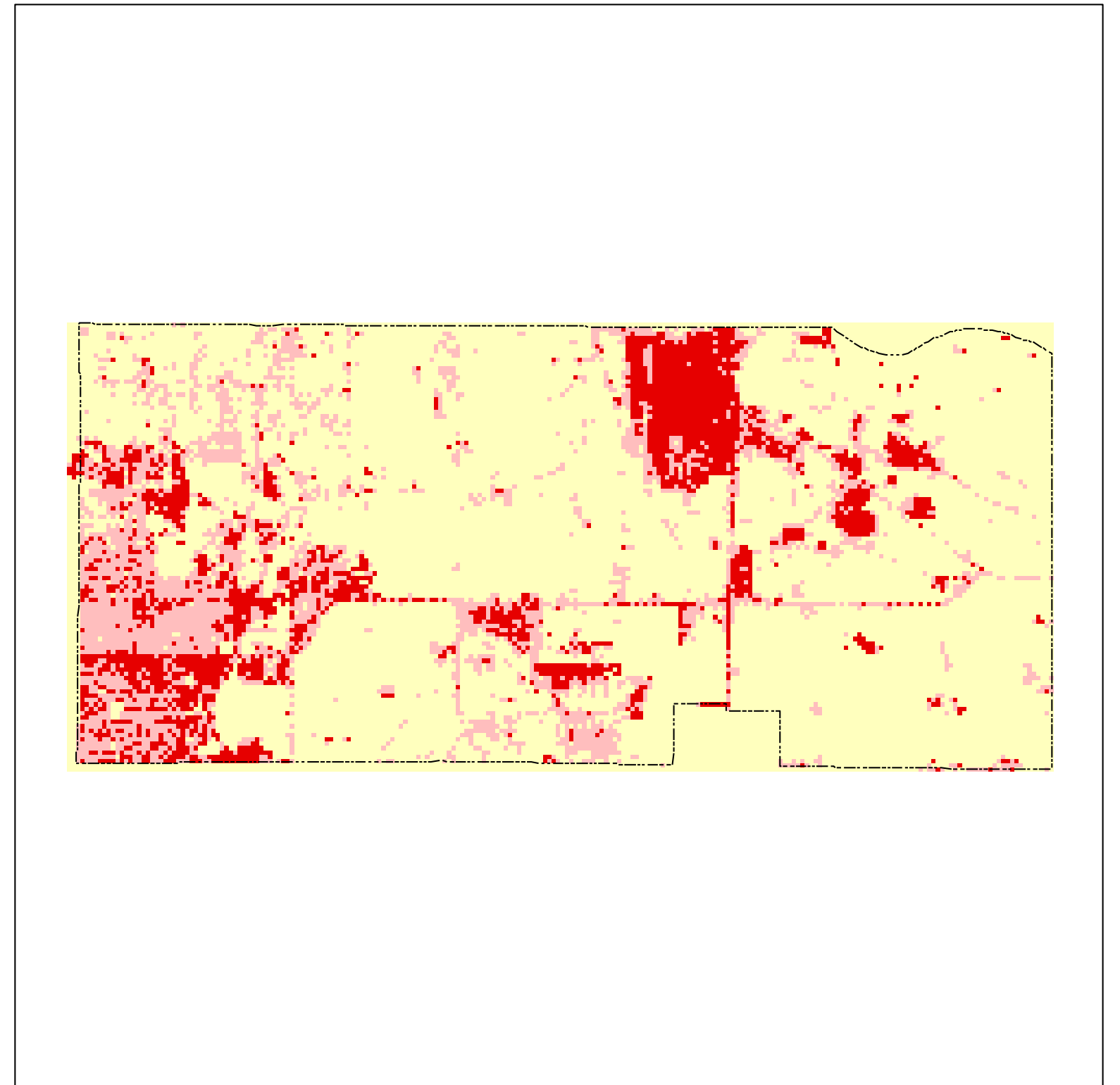
1991



1998



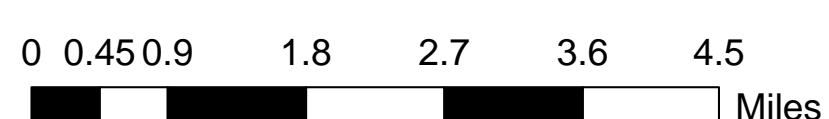
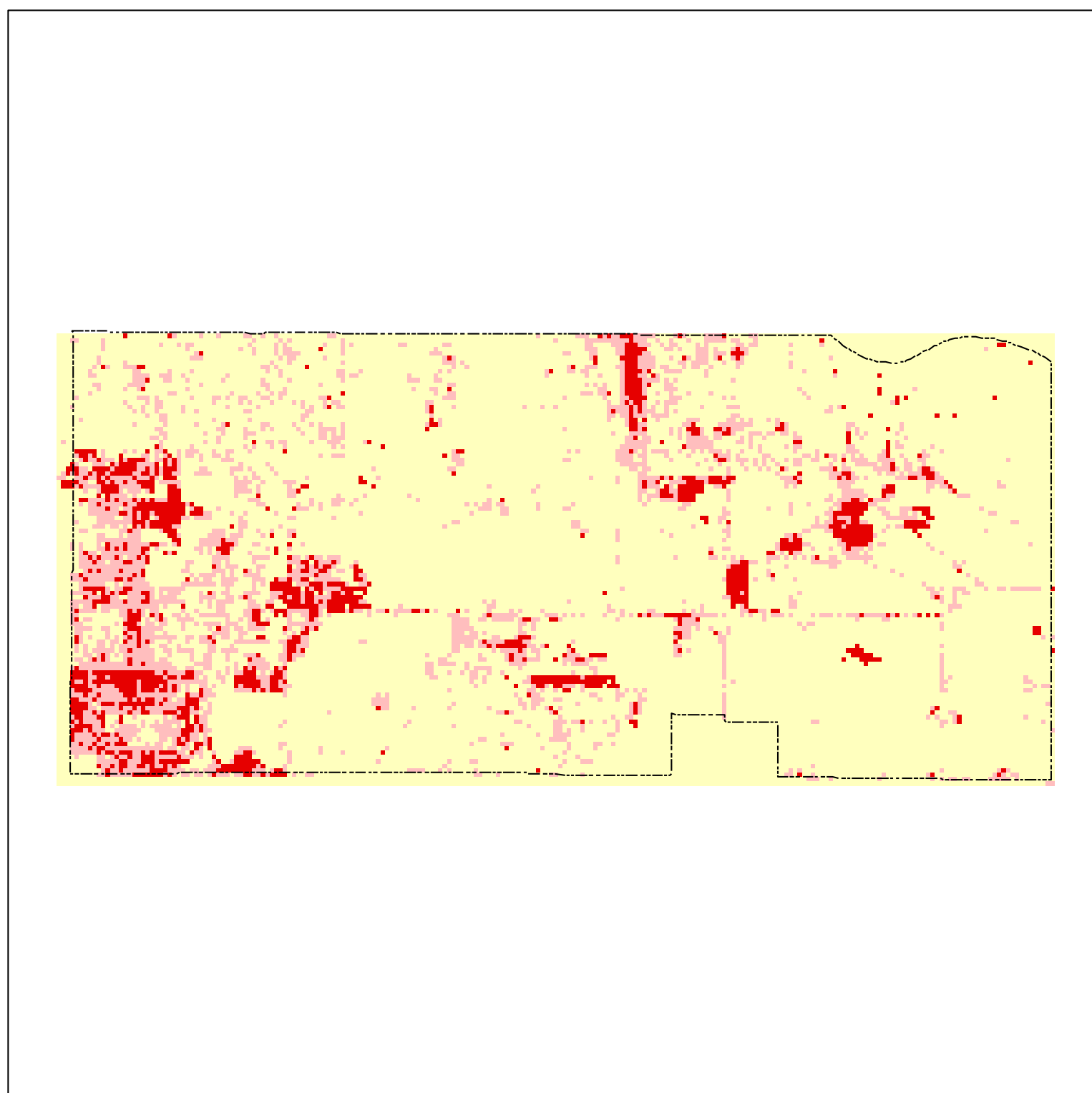
2002



### 1986 through 2002 Impervious Cover



### Percent Change from 1986 to 2002



Municipality	Impervious Acres				1986-2002 Change
	1986	1991	1998	2002	
Rosemount	1631.1	2026.1	2506.0	3147.8	1516.7

### % Change

