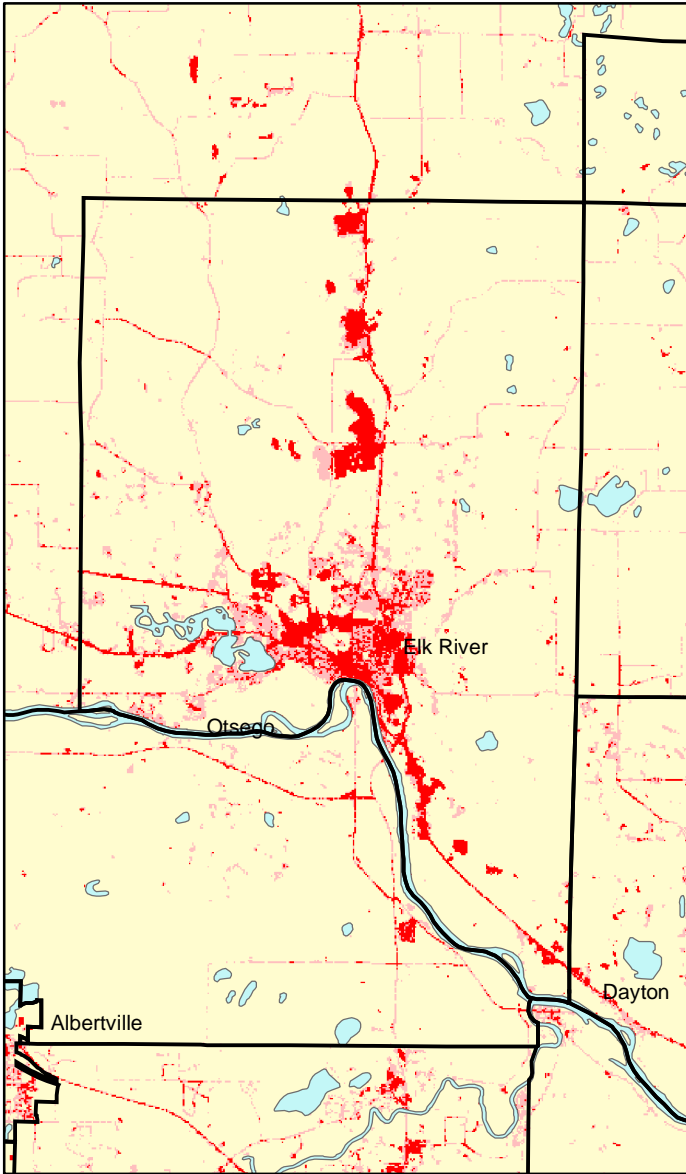
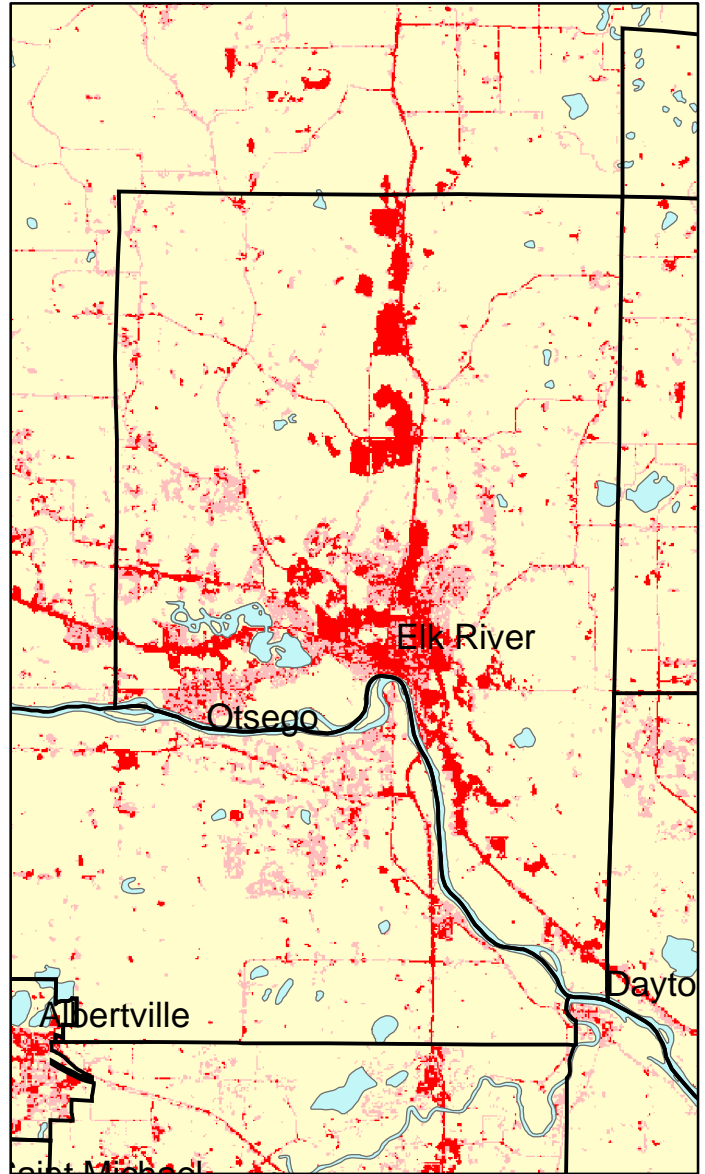


Elk River, MN: Impervious Cover

1990



2000



Elk River Summary	
Total Area Of MCD (Acres):	28030
1990 Impervious Area Total (Acres):	1959
2000 Impervious Area Total (Acres):	3157
1991 Percent Impervious Surface:	7%
2000 Percent Impervious Surface:	11%
Increase In IC (Acres)	1199
Percent Increase IC %	61%

