

Preventing Storm Water Pollution: What We Can Do

~Solid Waste Operations~

GENERAL TOPICS

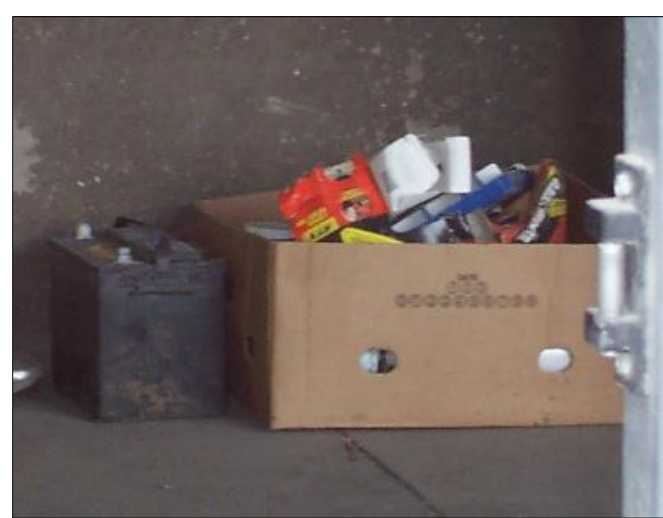
Employees who work in our solid waste operations can help reduce water pollution by taking precautions in their daily activities:

- Trash Collection Activities
- Transfer Stations/Drop Off Operations
- Mulching Operations

HAZARDOUS WASTE

▪ **DO NOT** pick up hazardous wastes (flammables, toxics, explosives) such as:

- used batteries
- solvents, fuels
- fluorescent bulbs
- pool chemicals
- pesticides/fertilizers
- fireworks and ammunition



▪ Notify residents of household hazardous waste collection/disposal opportunities.

TRASH COLLECTION

▪ Notify residents of persistent problems with scattered trash.



▪ Watch the area around the hopper to avoid leaving litter behind.



▪ Pick up any trash that falls from truck during compaction.

LIQUID WASTE

▪ **DO NOT** pick up liquid wastes such as:

- used motor oil
- paint
- antifreeze
- cooling liquids
- cooking oil



POLLUTION PREVENTION EQUIPMENT



▪ Carry spill kits on trash collection trucks and service vehicles. Kits could include:

- broom
- shovel
- absorbent
- pop-up pools

LEAKS and SPILLS

▪ Check vehicle frequently for leaking fluids and notify supervisor of significant leaks.



▪ If a major spill or leak occurs, contain the spill using absorbents and take steps to stop the leak if possible.



▪ Immediately clean up spills to minimize safety hazards and deter spreading.

VEHICLE WASHING

- Make certain hopper drain plugs are always sealed during collection.
- Wash collection trucks only in facilities where wash water drains to the sanitary sewer system or is collected and recycled.



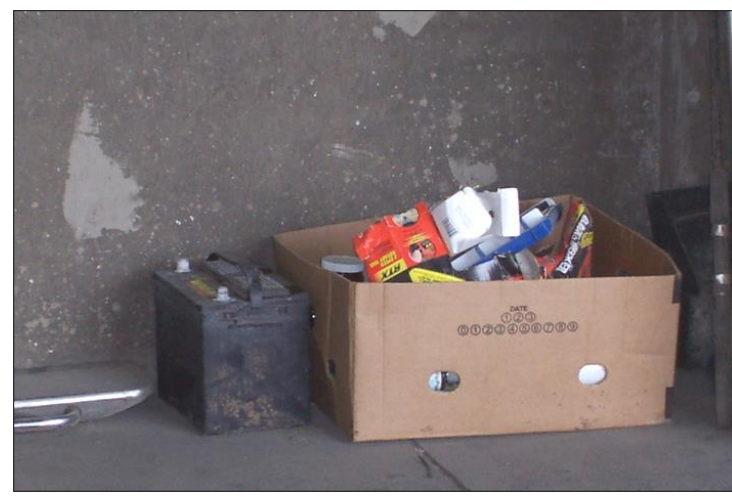
Preventing Storm Water Pollution: What We Can Do

~Solid Waste Operations~

TRANSFER STATIONS and DROP-OFF OPERATIONS



- Pick up all windblown litter and rubbish.



- Provide covered storage areas for solid and liquid wastes that will not be taken to the landfill.



- Dry sweep litter and rubbish periodically, especially during rainy and windy conditions.



- Use litter screens such as:
 - chain link fences
 - steel mesh
 - orange construction fencing.

PREVENTING RUNOFF



- **DO NOT** overfill collection receptacles.

- **DO NOT** hose down work areas that drain into storm sewers or drainage ways.

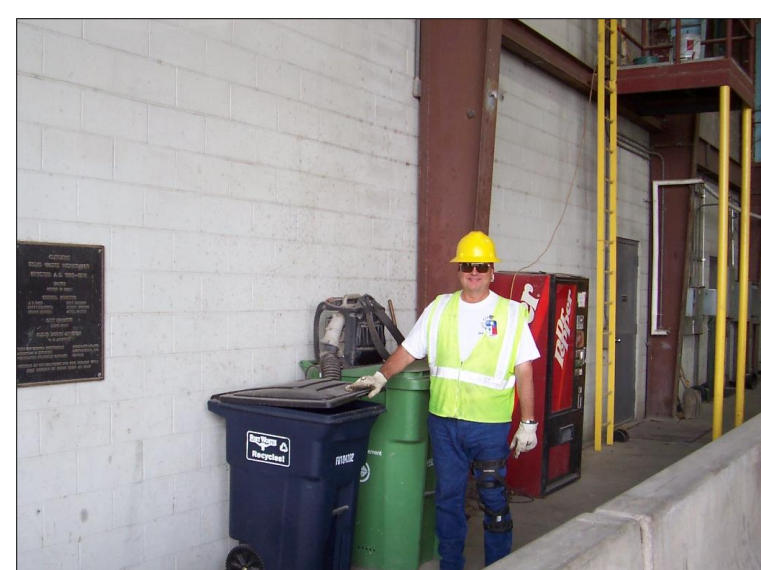


- Conduct facility wash-down activities as directed by the supervisor.

- Retain spills and prevent them from entering the environment.



SECURING TRASH



- Make sure lids on bins and receptacles are closed, especially during rain events.



- Notify haulers and citizens on requirements to cover loads during transport.

MULCHING OPERATIONS



- Remove trash and foreign materials from brush prior to grinding.
- Place trash and debris in covered containers.



- Use litter screens (fencing) to capture windblown trash.
- Use mulch berms to filter runoff from work area.

CLEAN-UP SPILLS PROPERLY



- Locate source of spill and prevent further spillage.



- Immediately clean up spills to minimize safety hazards and deter spreading.

CONCLUSION

Protecting water quality requires that all employees do their part to prevent storm water pollution.