

Types of permeable pavement

Green Infrastructure: Permeable pavement can be an important tool for retention and detention of stormwater runoff. Permeable pavement may provide additional benefits, including reducing the need for de-icing chemicals, and providing a durable and aesthetically pleasing surface.



The most commonly used permeable pavement surfaces are pervious concrete, porous asphalt, and permeable interlocking concrete pavers. Other options include plastic and concrete grids, as well as amended soils (artificial media added to soil to maintain soil structure and prevent compaction) (MPCA 2008). This document focuses on pervious concrete, porous asphalt and permeable interlocking concrete pavements. A general comparison of their properties is provided in the table below. Additional requirements specific to each system should be obtained by designers from suppliers and from the local review authority.



Photo illustrating pervious concrete. Pervious concrete is a special type of concrete with a high porosity that allows water from precipitation and other sources to pass directly through.

For each of the above pavement surfaces, there are many variants depending on the design goals. For instance, permeable pavement can be installed with a deep underlying reservoir consisting of open-graded, crushed rock. This design provides water quality and quantity control by storing runoff and infiltrating it into the subgrade soils over an extended period of time. A second design variation includes a deep underlying reservoir consisting of open-graded, crushed rock above an impermeable layer of soil or a liner and an underdrain. The underdrain typically discharges to a stormwater pond or storm sewer system. This design provides some runoff flow attenuation, filtering, but no volume reduction. These two options provide different levels of treatment.

To assist with selection of a permeable pavement type, a general comparison of the properties of the three major permeable pavement types is provided in the table below. Designers should check with product vendors and the local review authority to determine specific requirements and capabilities of each system. Schematic cross sections of each system are illustrated in the design section for permeable pavement.



Photo illustrating porous asphalt. Porous asphalt is standard hot-mix asphalt that allows water to drain through it.

Summary of properties of

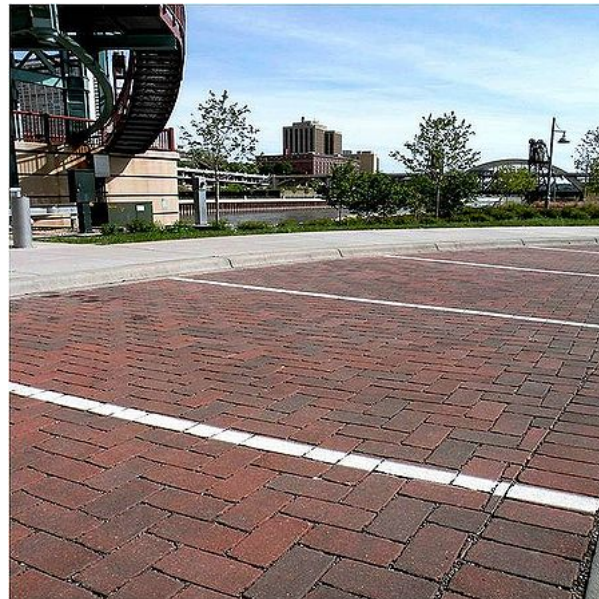


Photo illustrating permeable interlocking concrete pavement. Permeable interlocking pavers consist of concrete or stone units with open, permeable spaces between the units.

permeable pavements.

Link to this table

Properties	Pervious concrete	Porous asphalt	PICP
Typical pavement surface thickness ^a	5 to 8 inches	3 to 4 inches (thicker for high wheel load applications)	3 inches ^a
Bedding layer ^{a,f}	None	1 in. AASHTO (http://www.transportation.org/Pages/default.aspx) No. 57 stone	2 inches of AASHTO (http://www.transportation.org/Pages/default.aspx) No. 8 stone (MnDOT 3127 FA-3)
Reservoir layer ^{b,f}	AASHTO (http://www.transportation.org/Pages/default.aspx) No. 57 stone or per hydraulic design	AASHTO (http://www.transportation.org/Pages/default.aspx) No. 2, 3, or 5 stone	4 inches of AASHTO (http://www.transportation.org/Pages/default.aspx) No. 57 stone over No. 2, 3 or 4 stone
Construction properties	<ul style="list-style-type: none"> ▪ Cast in place ▪ Seven day cure ▪ Must be continuously covered 	<ul style="list-style-type: none"> ▪ Cast in place ▪ 24 hour cure 	<ul style="list-style-type: none"> ▪ No cure period ▪ Manual or mechanical installation of pre-manufactured units
Installed surfacing cost ^c	3 to \$4/square foot	\$2/square foot	3 to \$4/square foot
Minimum batch size	None		
Longevity ^d	20 to 30 years		
Overflow	Catch basin, overflow edge, elevated underdrain		
Runoff temperature	Cooling at the reservoir layer		

reduction			
Surface colors/texture	Range of light colors and textures	Black or dark grey colors	Wide range of colors, textures and patterns
Load bearing capacity ^e	Handles all vehicle loads with appropriate surface and base/subbase layer material and thickness design		
Surface cleaning ^g	Periodic vacuuming; replace if completely clogged and uncleanable		Periodic vacuuming; replace jointing stones if completely clogged and uncleanable
Other issues	<ul style="list-style-type: none"> ▪ Avoid concentrated deicers ▪ Avoid winter sanding 	<ul style="list-style-type: none"> ▪ Avoid seal coating ▪ Avoid winter sanding 	Avoid winter sanding
Design reference	Report 522-2010 (http://www.concrete.org/BookstoreNet/bookstore.htm?HP=m_bookstore%7CACI)	Hansen 2008NAPA (http://www.asphaltpavement.org/)	Smith 2011 ICPI (http://www.icpi.org/)

^aThickness may vary depending on site and traffic conditions

^bReservoir storage may be augmented by corrugated metal pipes, plastic arch pipe or plastic lattice crates

^cSupply and install minimum surface thickness only; minimum 30,000 sf with Minnesota 2012 prevailing labor wages. Does not include base reservoir, drainage appurtenances, engineering, or inspection

^dBased on pavement being properly maintained. Resurfacing or rehabilitation may be needed after the indicated period

^eDepends primarily on on-site geotechnical considerations and structural design computations

^fASTM D448 Standard Classification for Sizes of Aggregate for Road and Bridge Construction or ASASHTO M-43

^gPeriodic vacuuming frequency determined from inspection, intensity of use, and other potential sediment sources

Related articles

- Overview for permeable pavement
- Types of permeable pavement
- Design criteria for permeable pavement
- Construction specifications for permeable pavement
- Assessing the performance of permeable pavement
- Operation and maintenance of permeable pavement
- Calculating credits for permeable pavement
- Case studies for permeable pavement
- Green Infrastructure benefits of permeable pavement
- Summary of permit requirements for infiltration
- Permeable pavement photo gallery
- Additional considerations for permeable pavement
- Links for permeable pavement
- References for permeable pavement
- Fact sheets for permeable pavement
- Requirements, recommendations and information for using permeable pavement BMPs in the MIDS calculator

Permeable pavement main page (https://stormwater.pca.state.mn.us/index.php?title=Permeable_pavement)

Retrieved from "https://stormwater.pca.state.mn.us/index.php?title=Types_of_permeable_pavement&oldid=51724"

This page was last edited on 8 March 2021, at 19:46.

Template:Footer

© 2021 by Minnesota Pollution Control Agency • Powered by MediaWiki