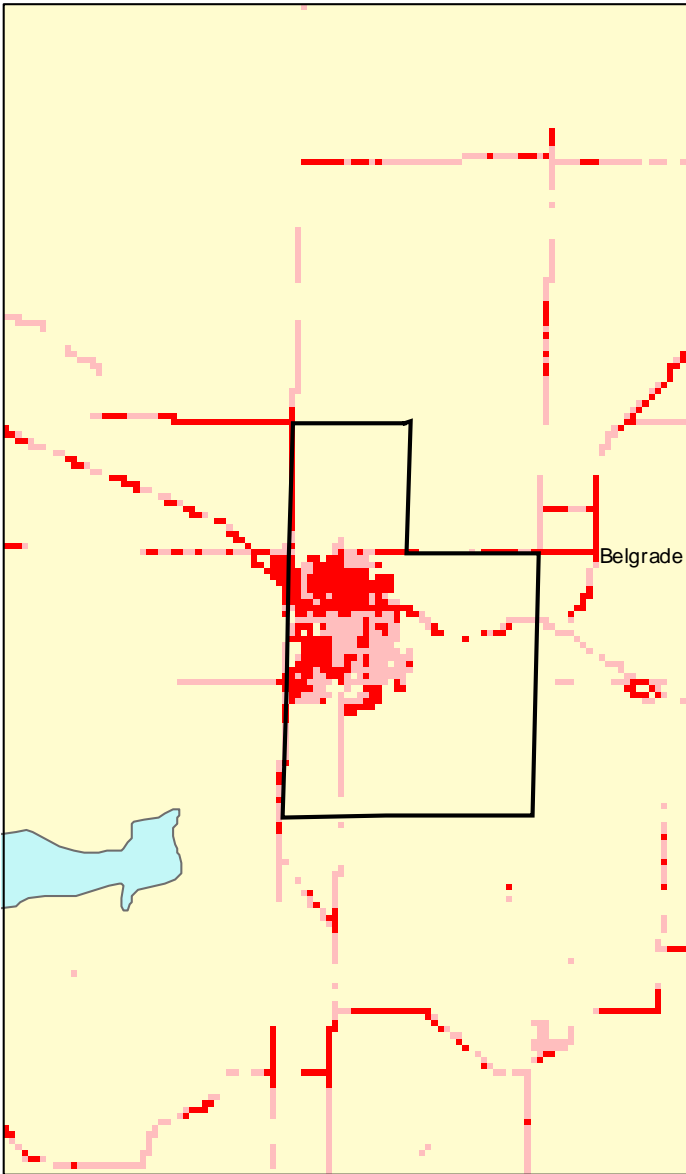
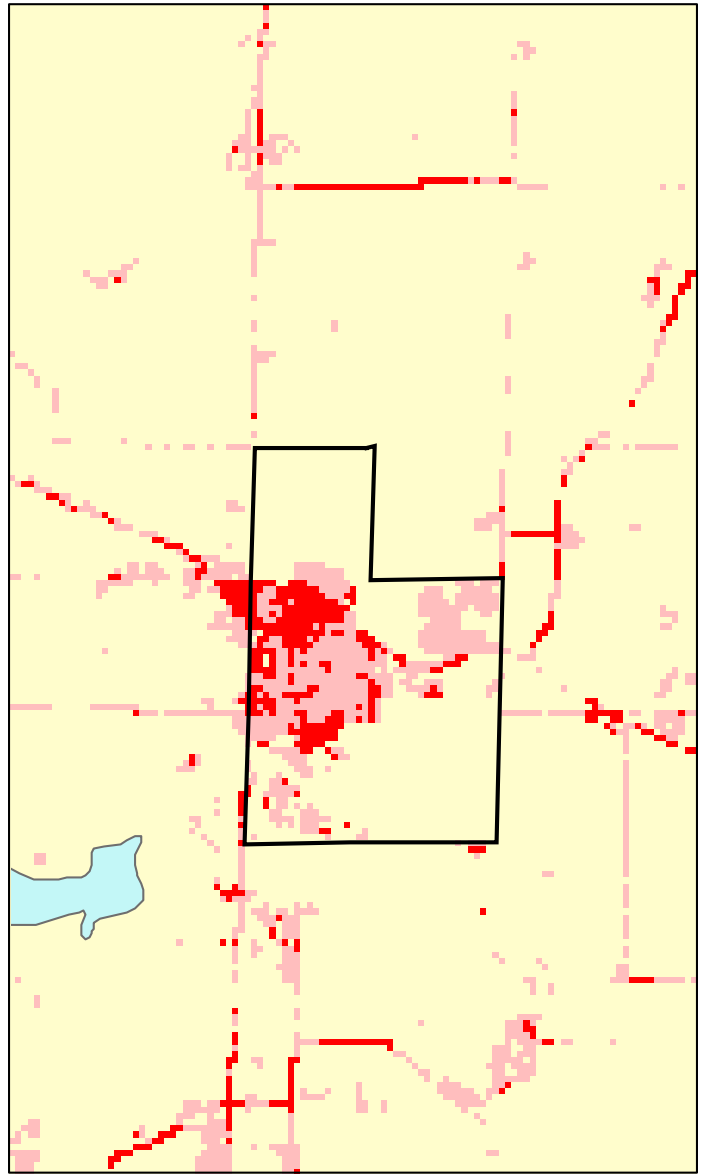


# Belgrade, MN: Impervious Cover

## 1990



## 2000



| <b>Belgrade Summary</b>             |            |
|-------------------------------------|------------|
| Total Area Of MCD (Acres):          | 754        |
| 1990 Impervious Area Total (Acres): | 90         |
| 2000 Impervious Area Total (Acres): | 122        |
| 1990 Percent Impervious Surface:    | 12%        |
| 2000 Percent Impervious Surface:    | 16%        |
| <b>Increase In IC (Acres)</b>       | <b>33</b>  |
| <b>Percent Increase IC %</b>        | <b>36%</b> |

