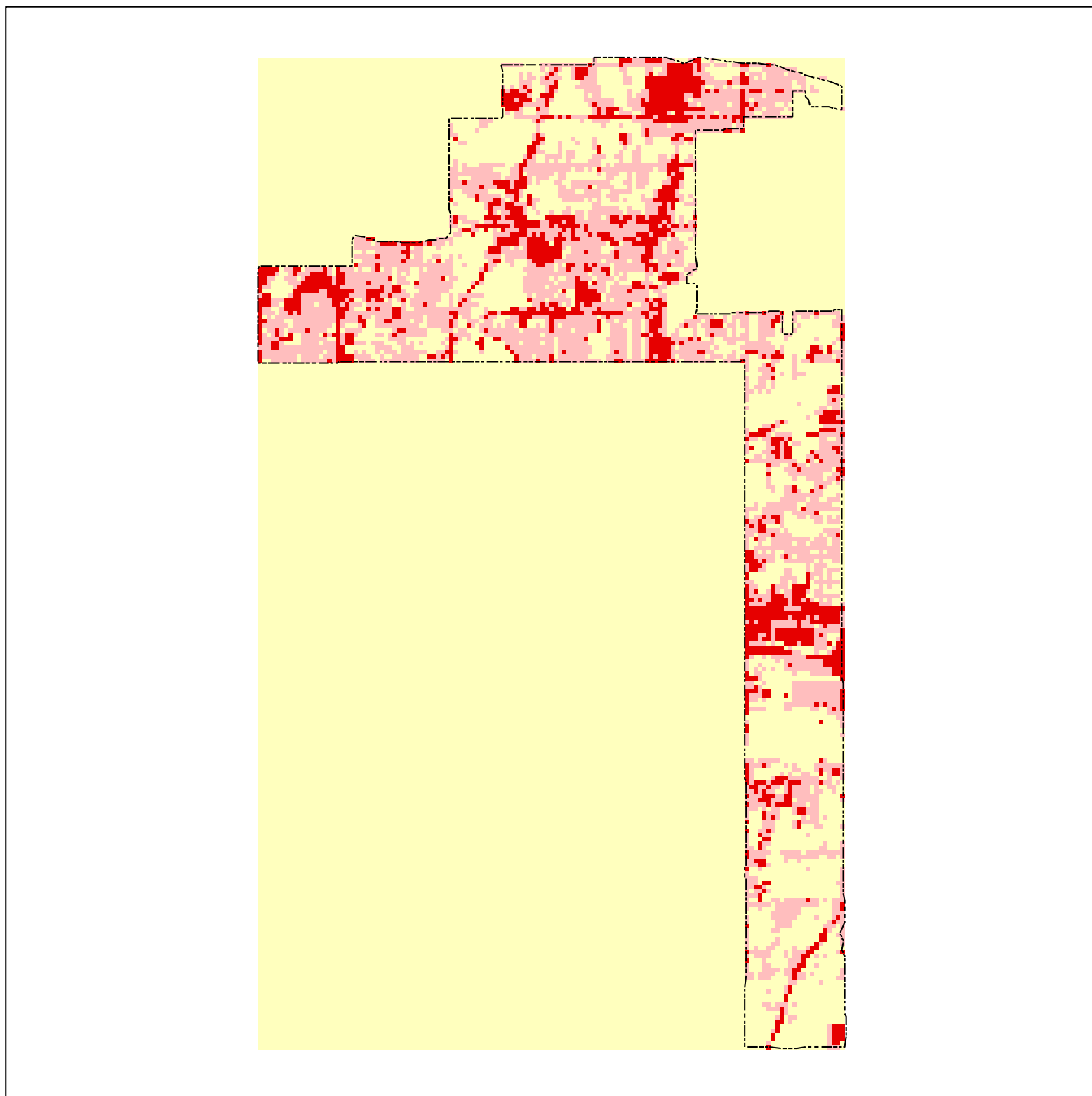


City of Maplewood Impervious Coverage based on Satellite Remote Sensing

1986



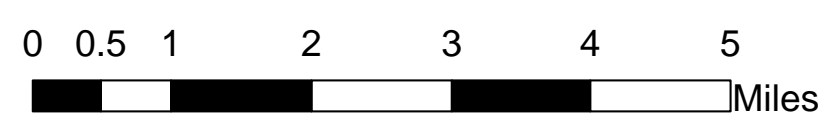
1991



1998



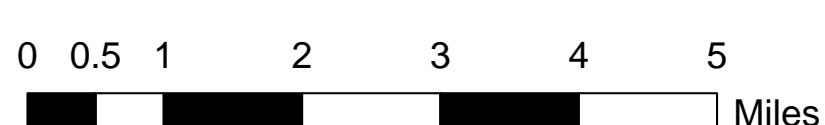
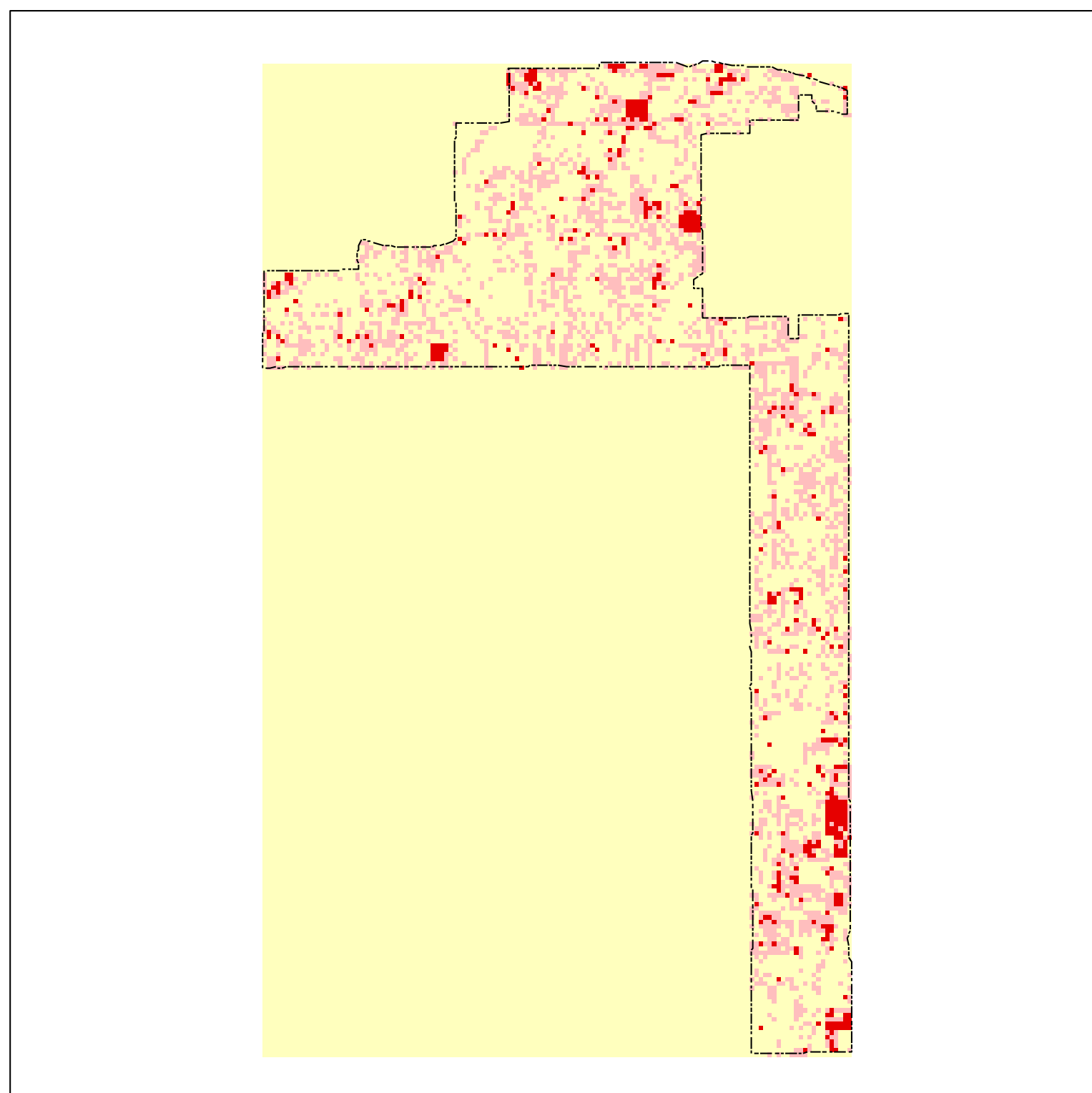
2002



1986 through 2002 Impervious Cover



Percent Change from 1986 to 2002



Municipality	Impervious Acres				1986-2002 Change
	1986	1991	1998	2002	
Maplewood	2837.7	3133.3	3208.3	3352.8	515.1

% Change

