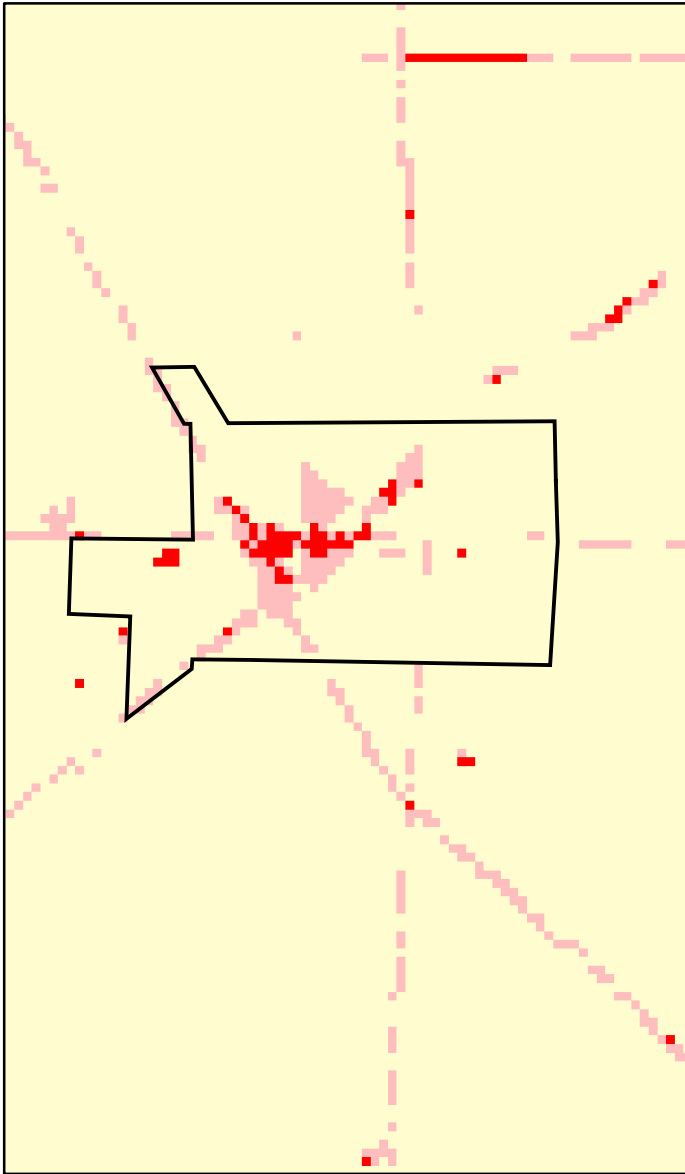
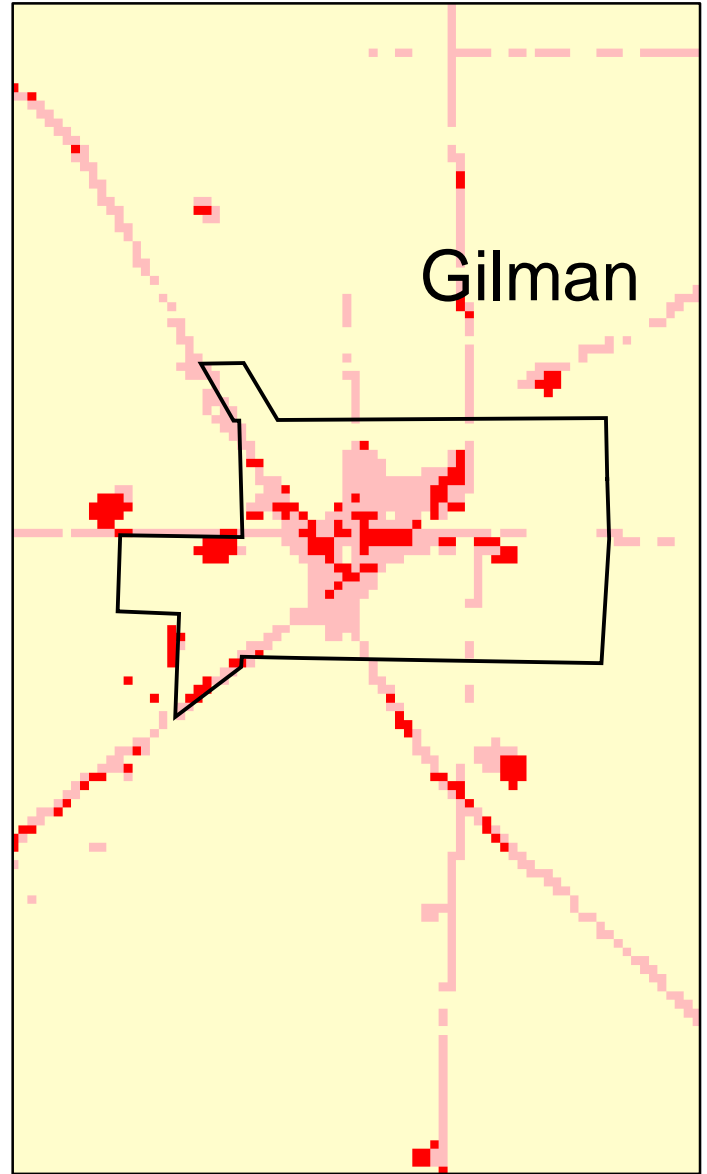


Gilman, MN: Impervious Cover

1990



2000



Gilman

Gilman Summary	
Total Area Of MCD (Acres):	332
1990 Impervious Area Total (Acres):	17
2000 Impervious Area Total (Acres):	35
1991 Percent Impervious Surface:	5%
2000 Percent Impervious Surface:	10%
Increase In IC (Acres)	18
Percent Increase IC %	110%

