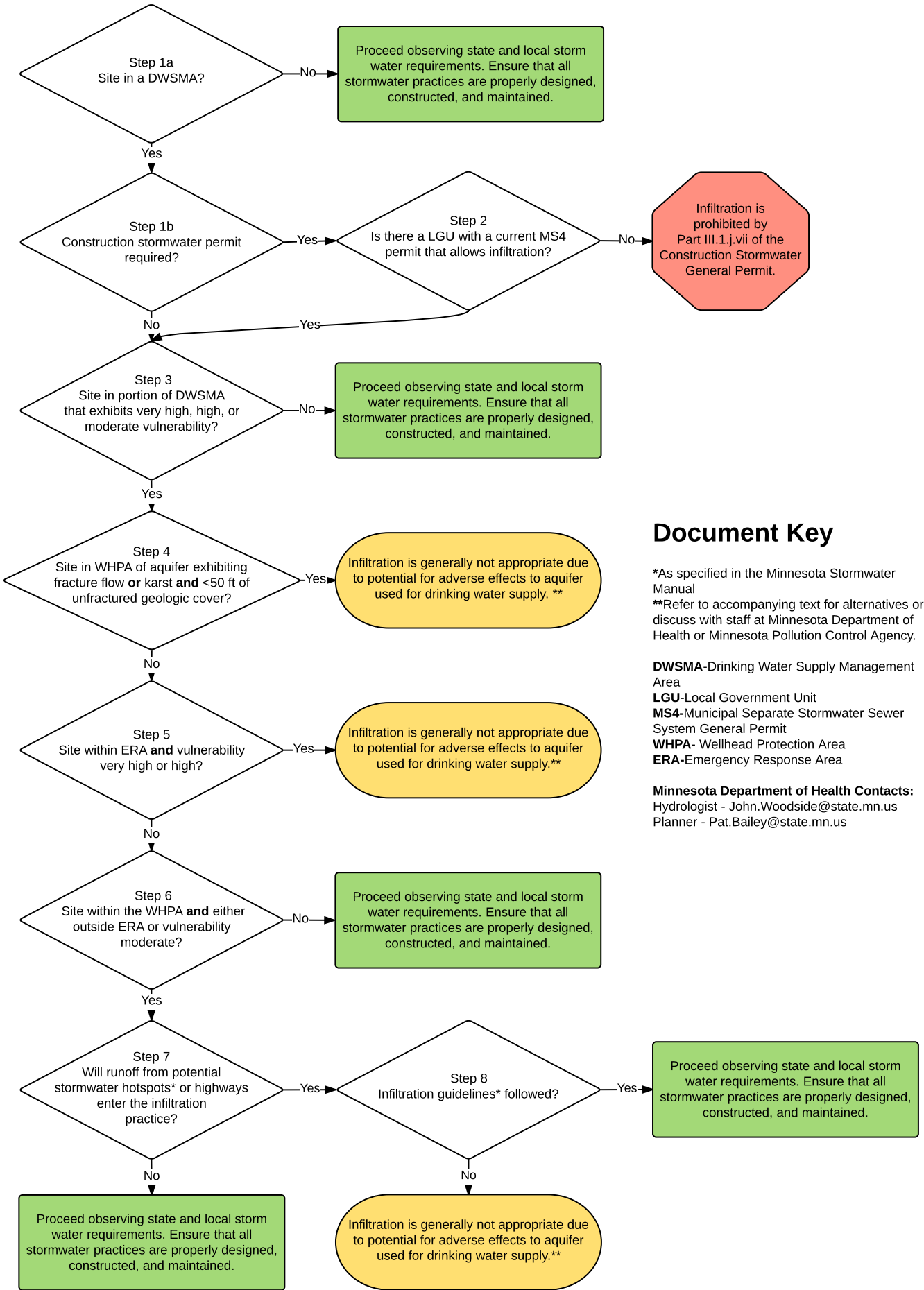


Stormwater Guidance for Sites in Drinking Water Supply Management Areas



Document Key

*As specified in the Minnesota Stormwater Manual
 **Refer to accompanying text for alternatives or discuss with staff at Minnesota Department of Health or Minnesota Pollution Control Agency.

- DWSMA**-Drinking Water Supply Management Area
- LGU**-Local Government Unit
- MS4**-Municipal Separate Stormwater Sewer System General Permit
- WHPA**- Wellhead Protection Area
- ERA**-Emergency Response Area

Minnesota Department of Health Contacts:
 Hydrologist - John.Woodside@state.mn.us
 Planner - Pat.Bailey@state.mn.us