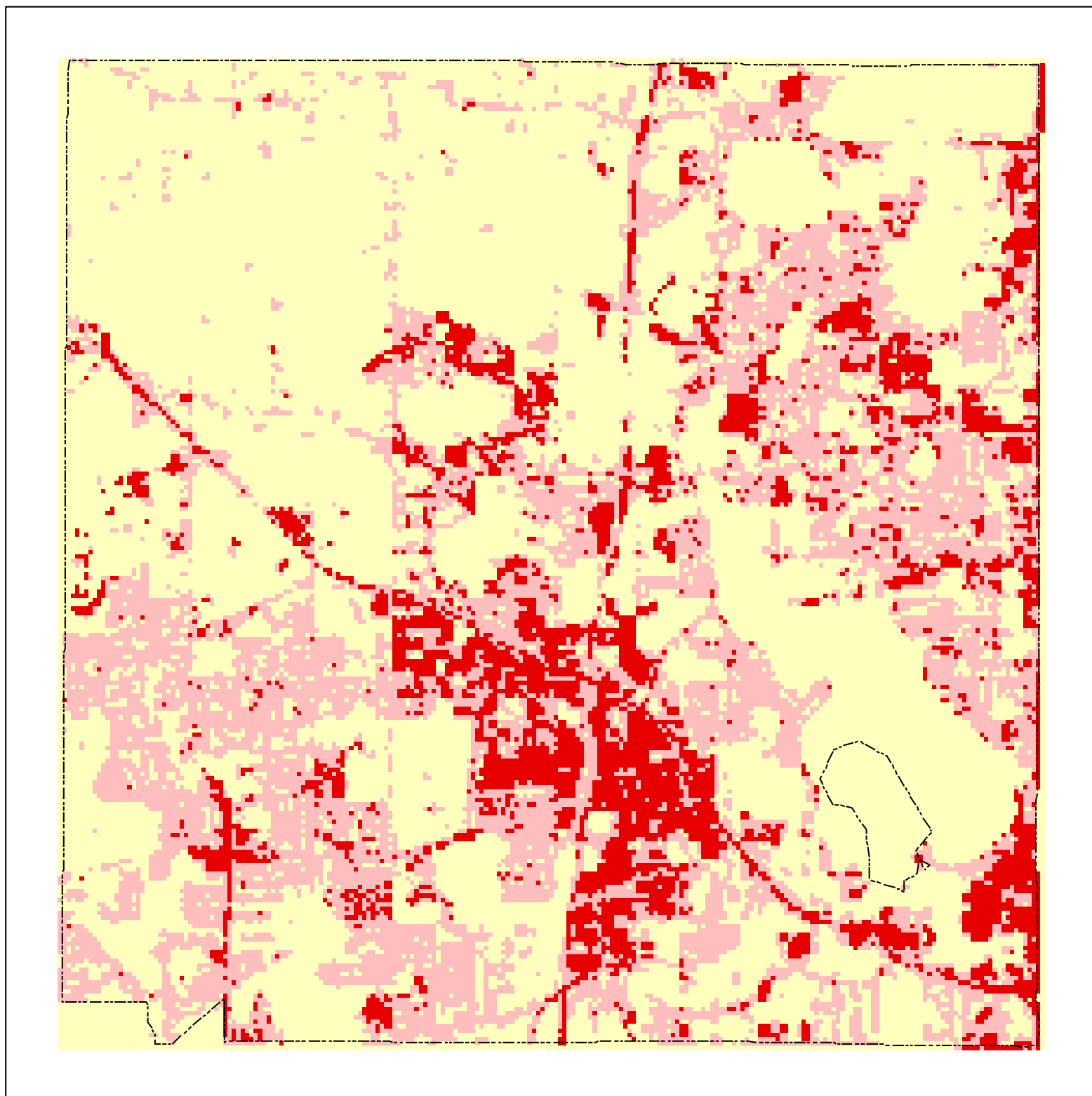
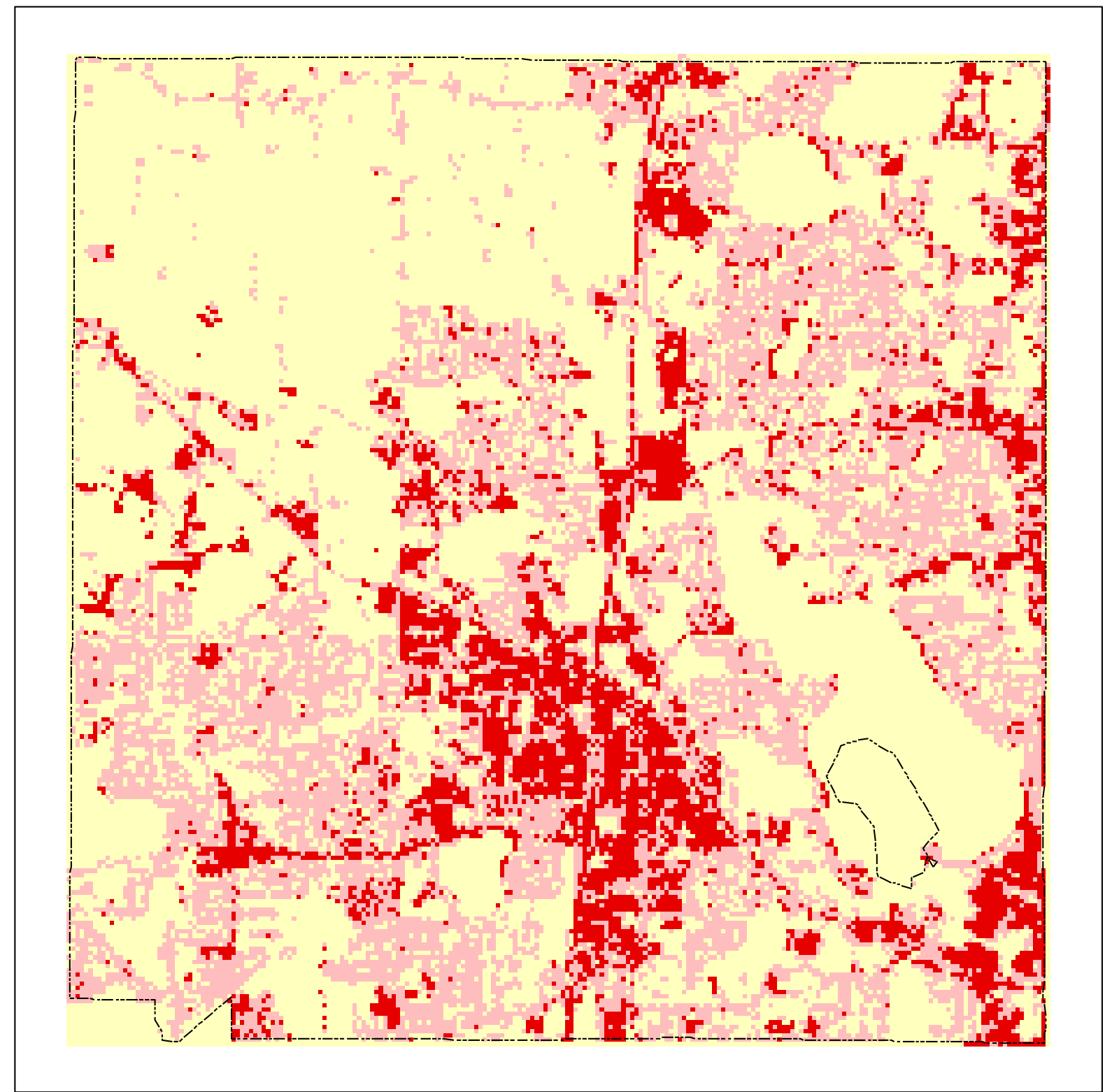


City of Plymouth Impervious Coverage based on Satellite Remote Sensing

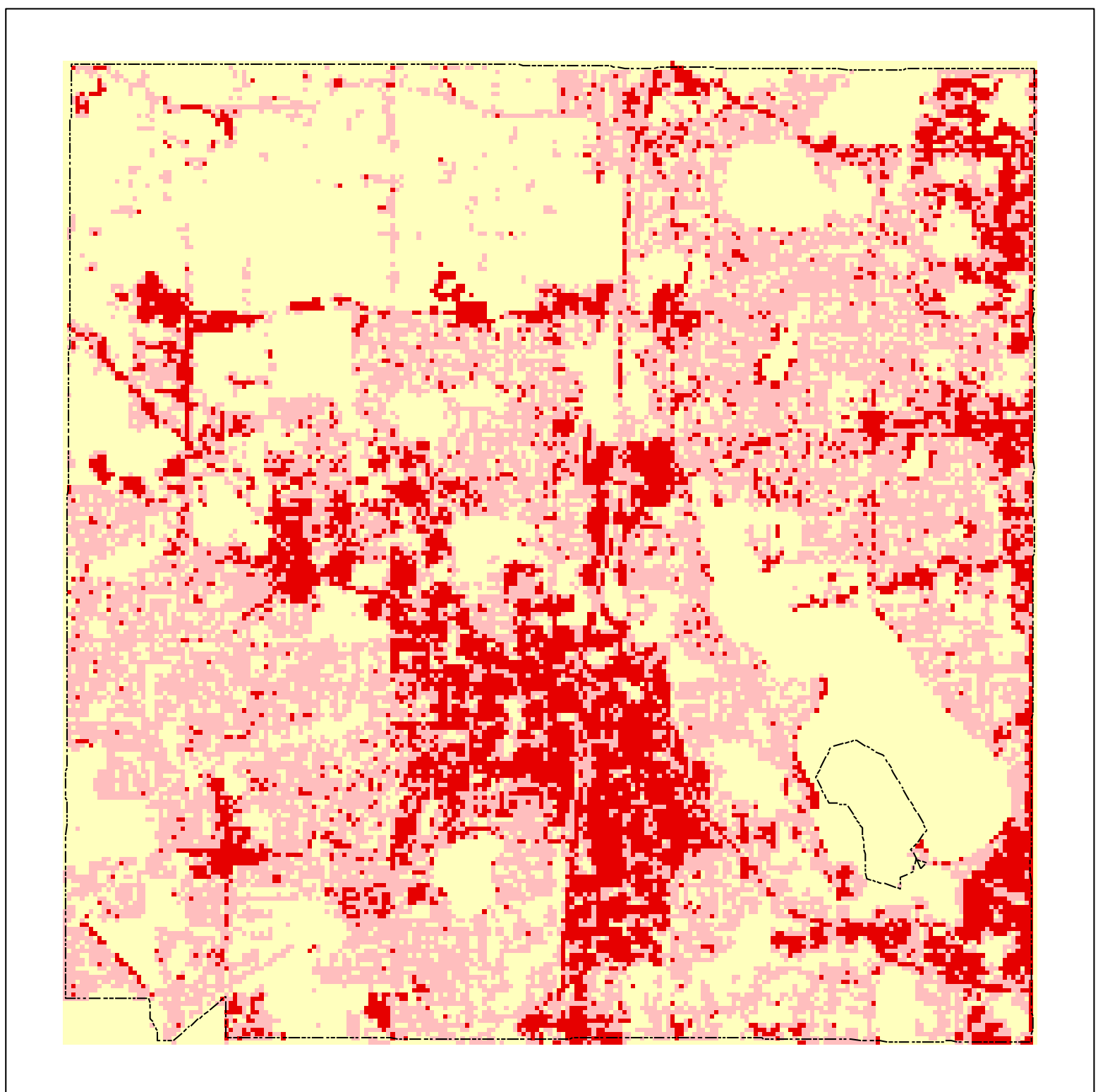
1986



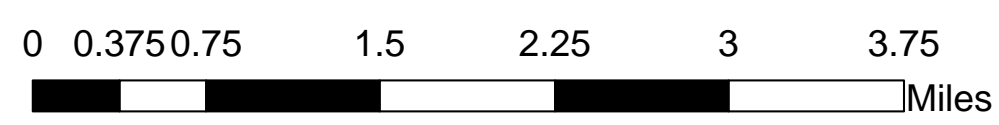
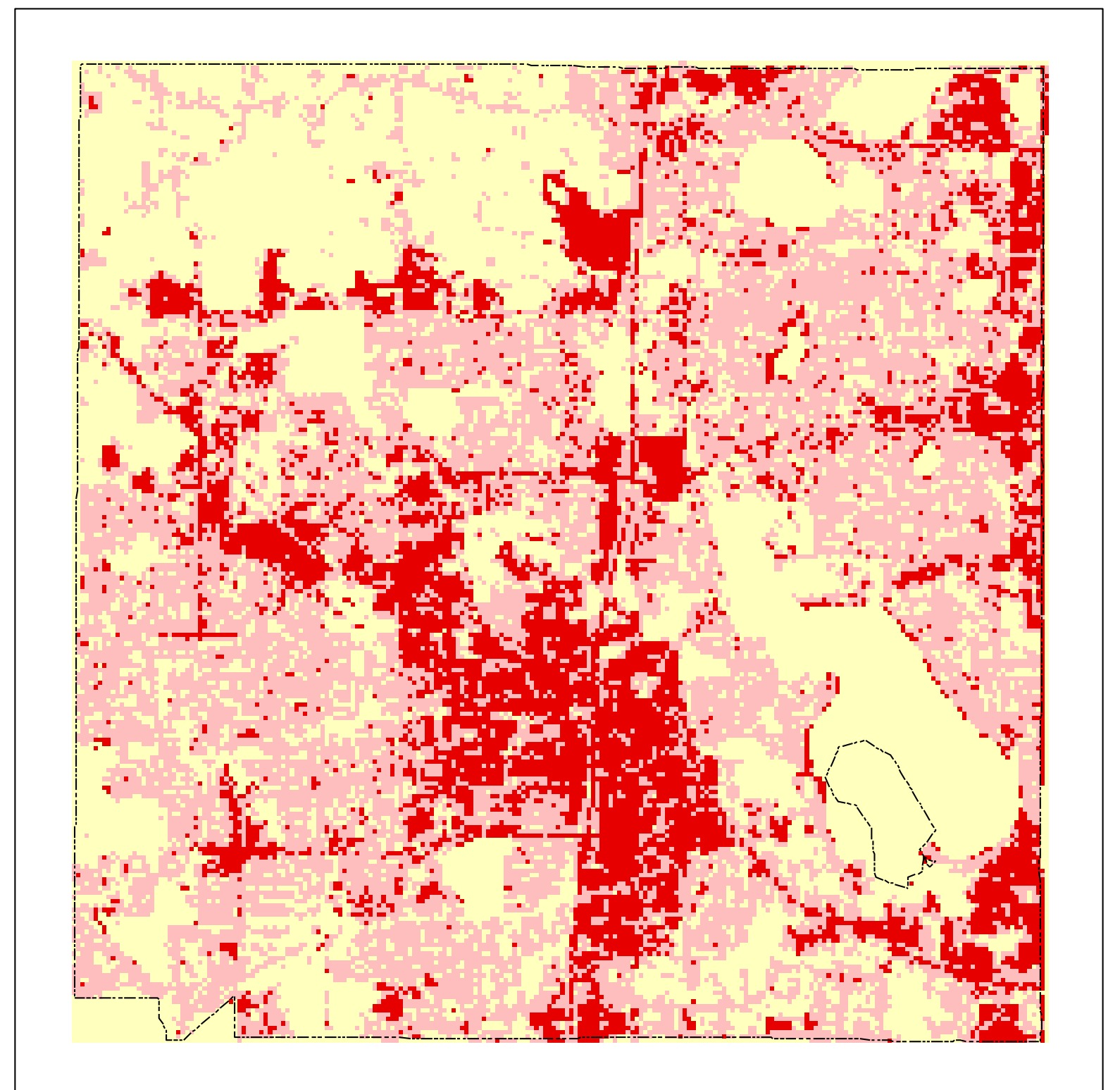
1991



1998



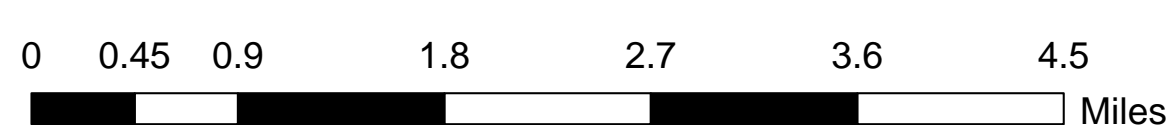
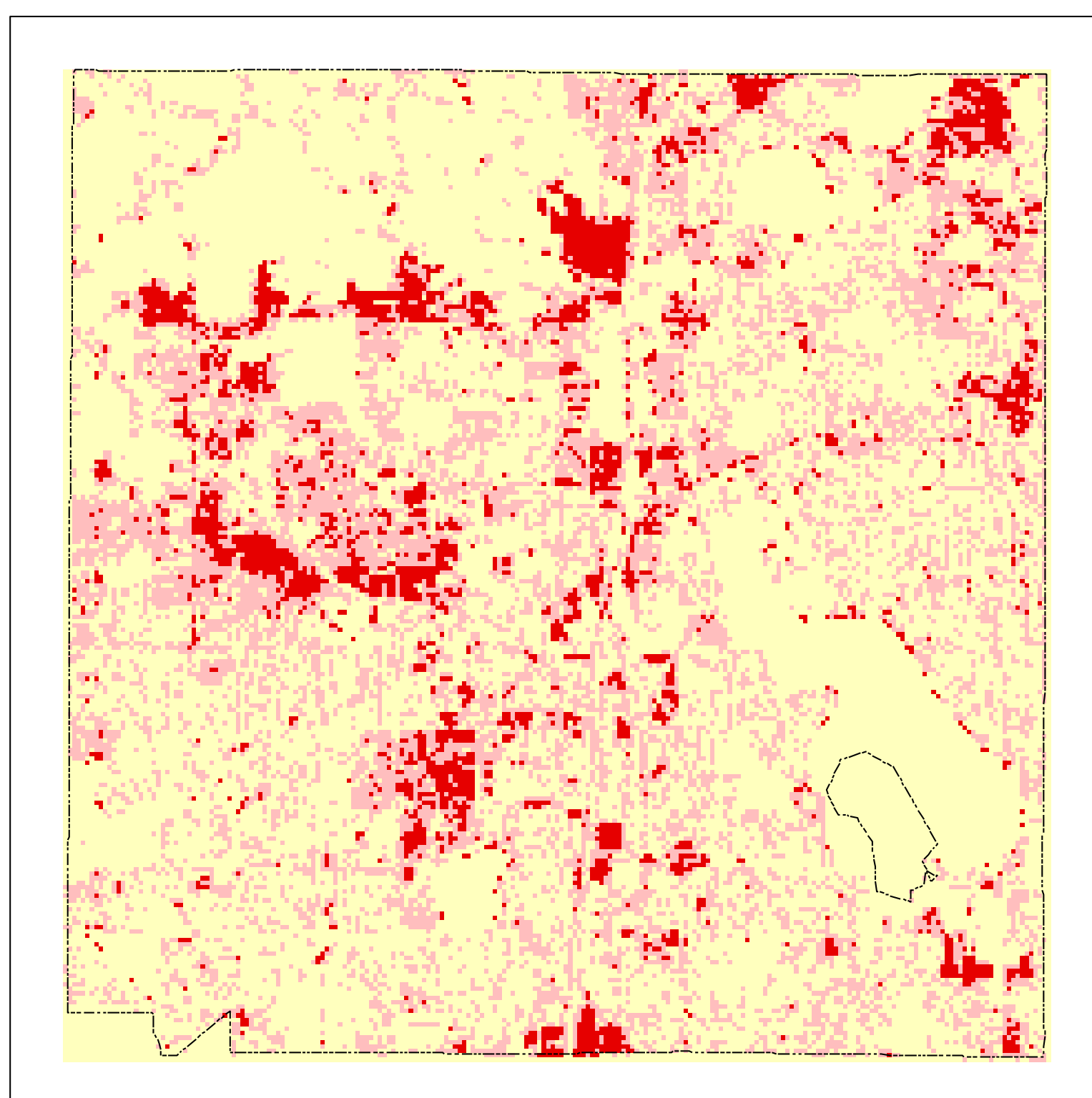
2002



1986 through 2002 Impervious Cover



Percent Change from 1986 to 2002



Municipality	Impervious Acres				1986-2002 Change
	1986	1991	1998	2002	
Plymouth	3926.7	4224.3	5322.8	5730.8	1804.1

% Change

