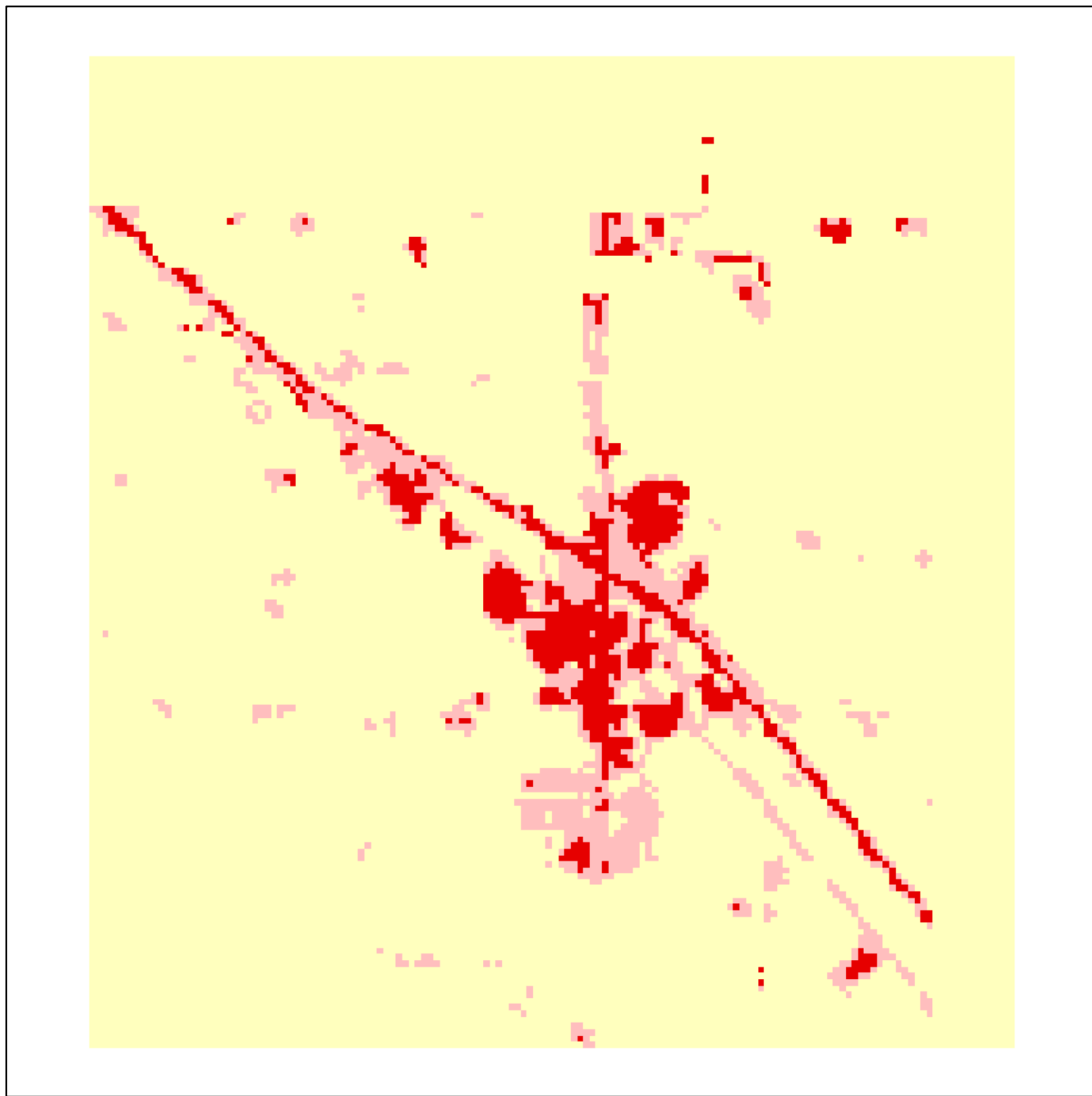
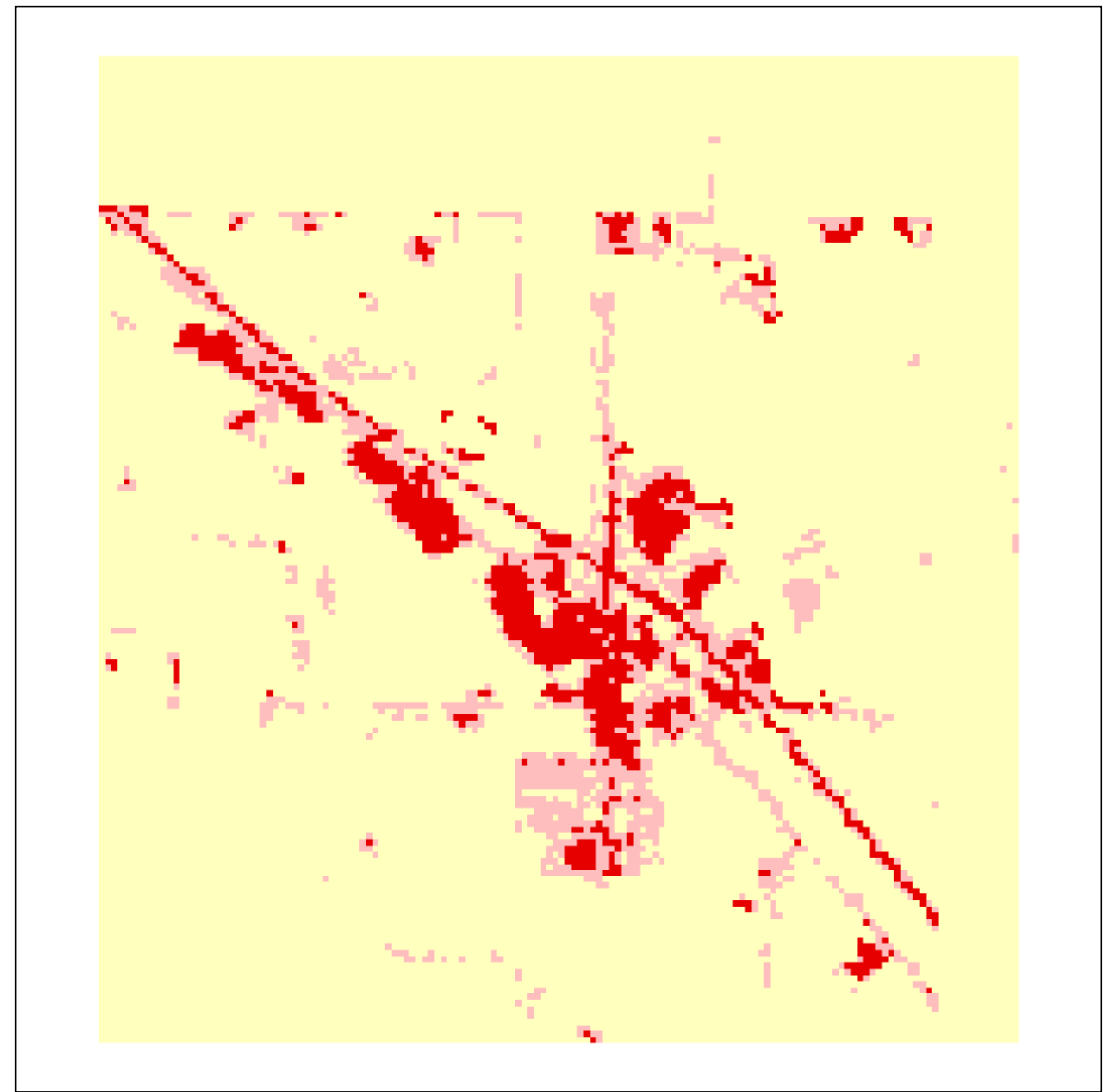


City of Rogers Impervious Coverage based on Satellite Remote Sensing

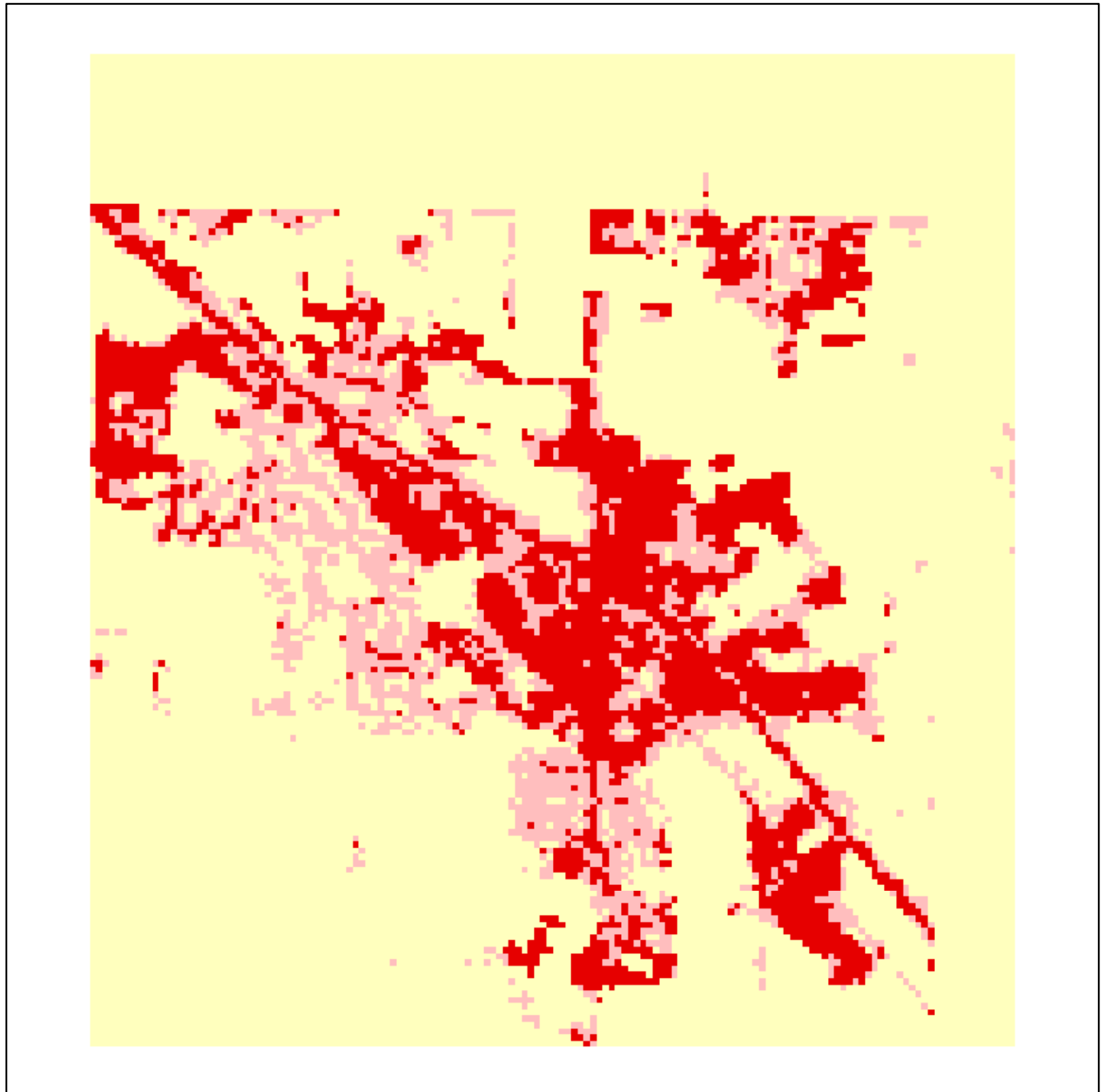
1986



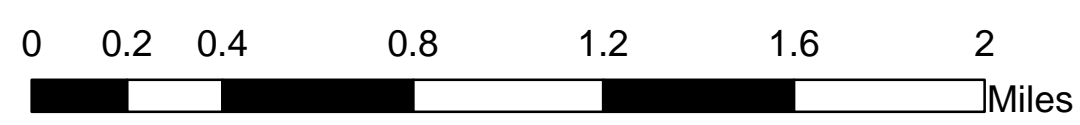
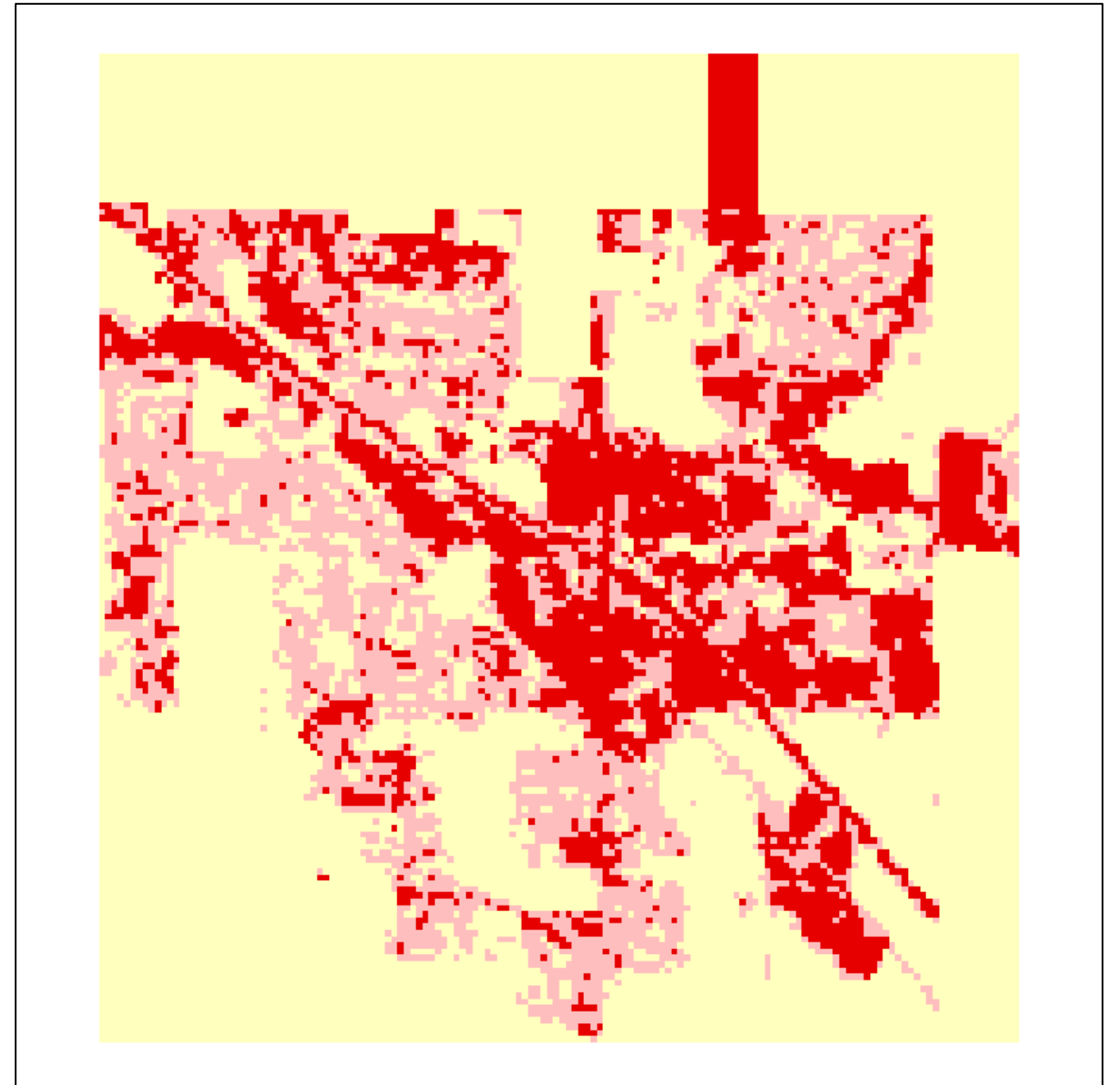
1991



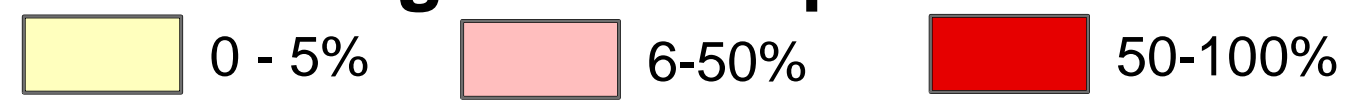
1998



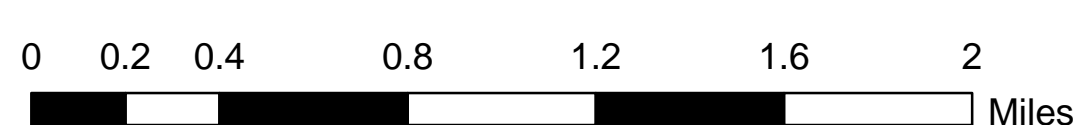
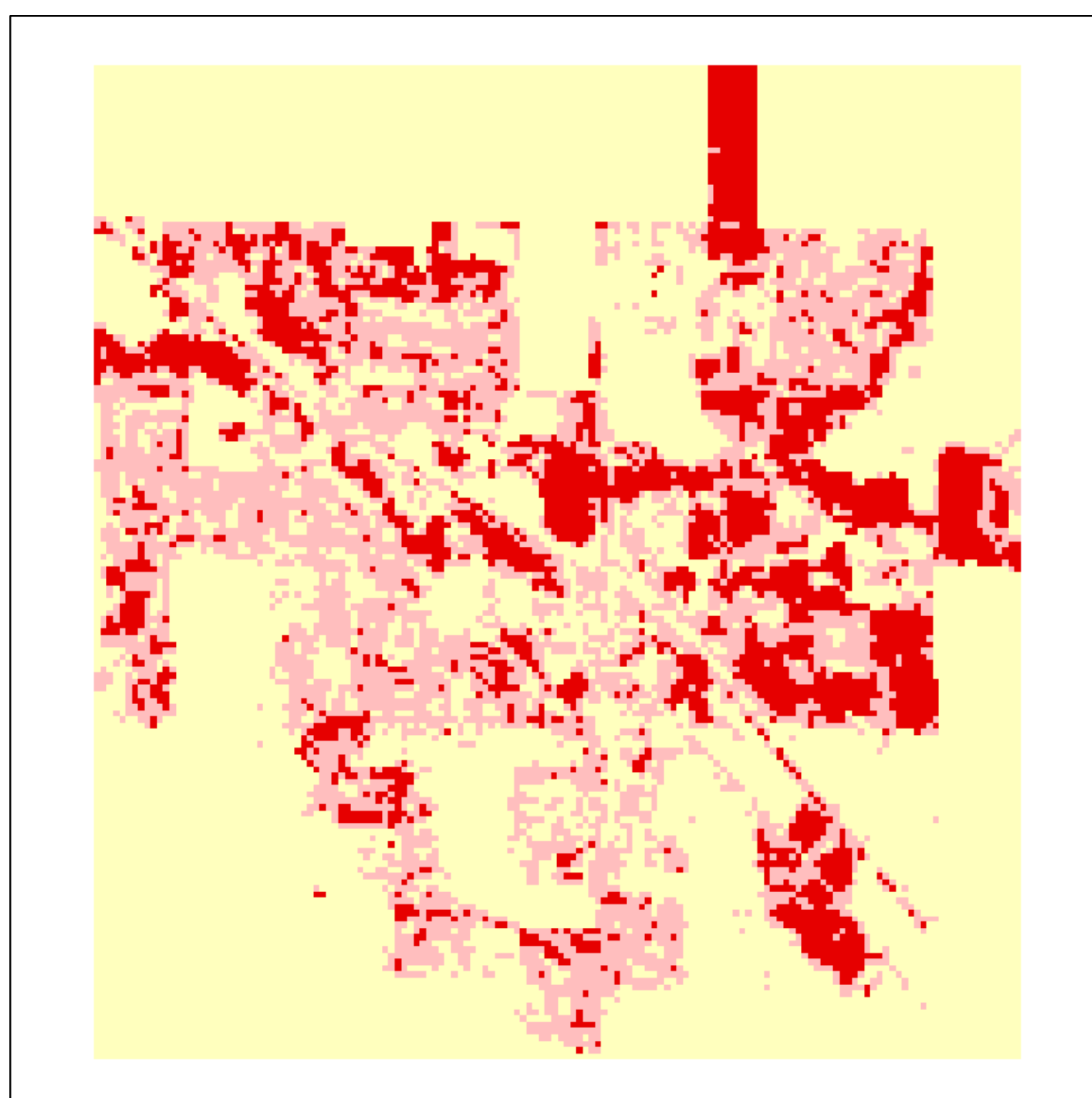
2002



1986 through 2002 Impervious Cover



Percent Change from 1986 to 2002



Impervious Acres					
Municipality	1986	1991	1998	2002	1986-2002 Change
Rogers	249.0	312.9	7892.2	1079.3	830.3

% Change

