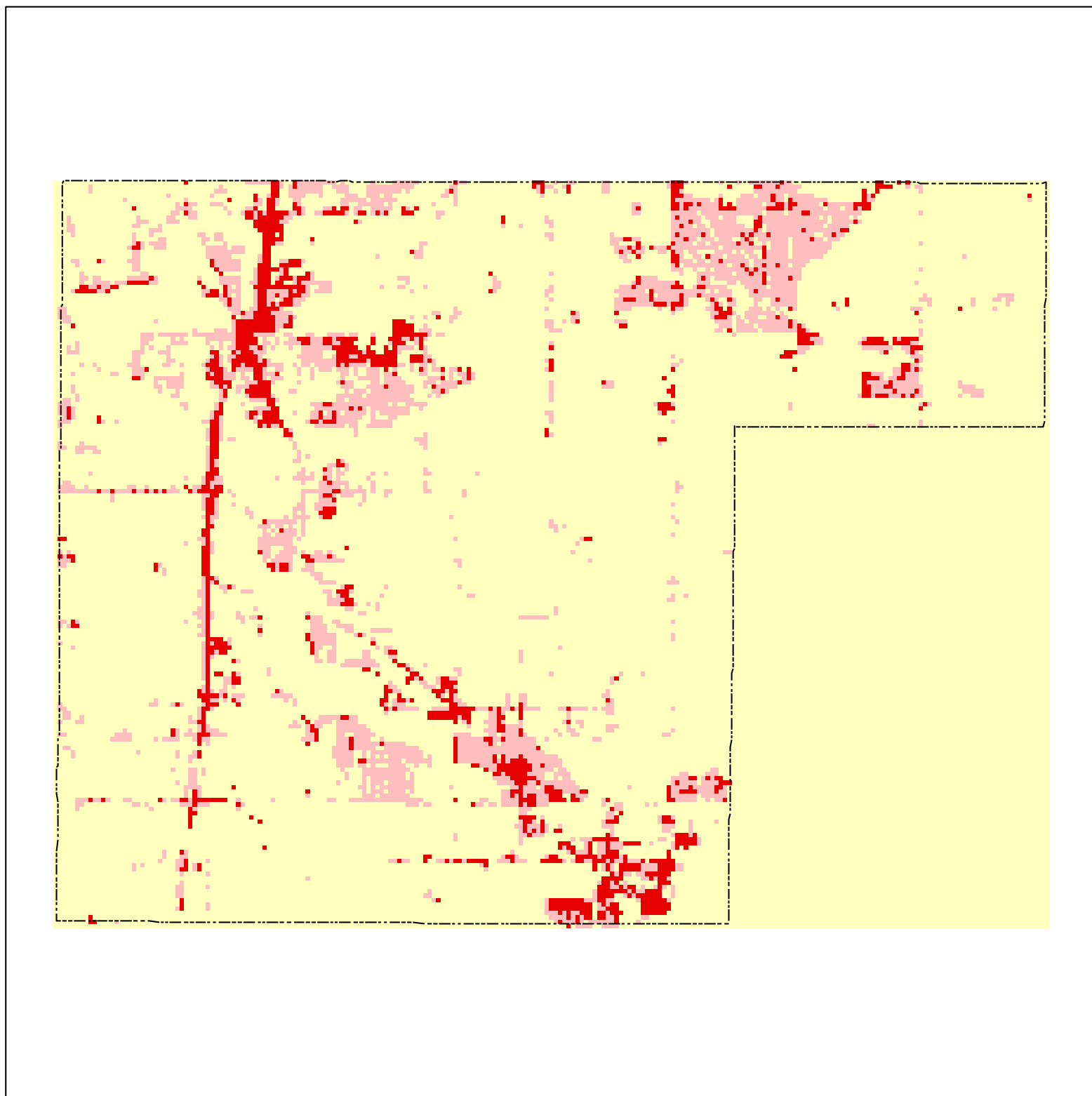
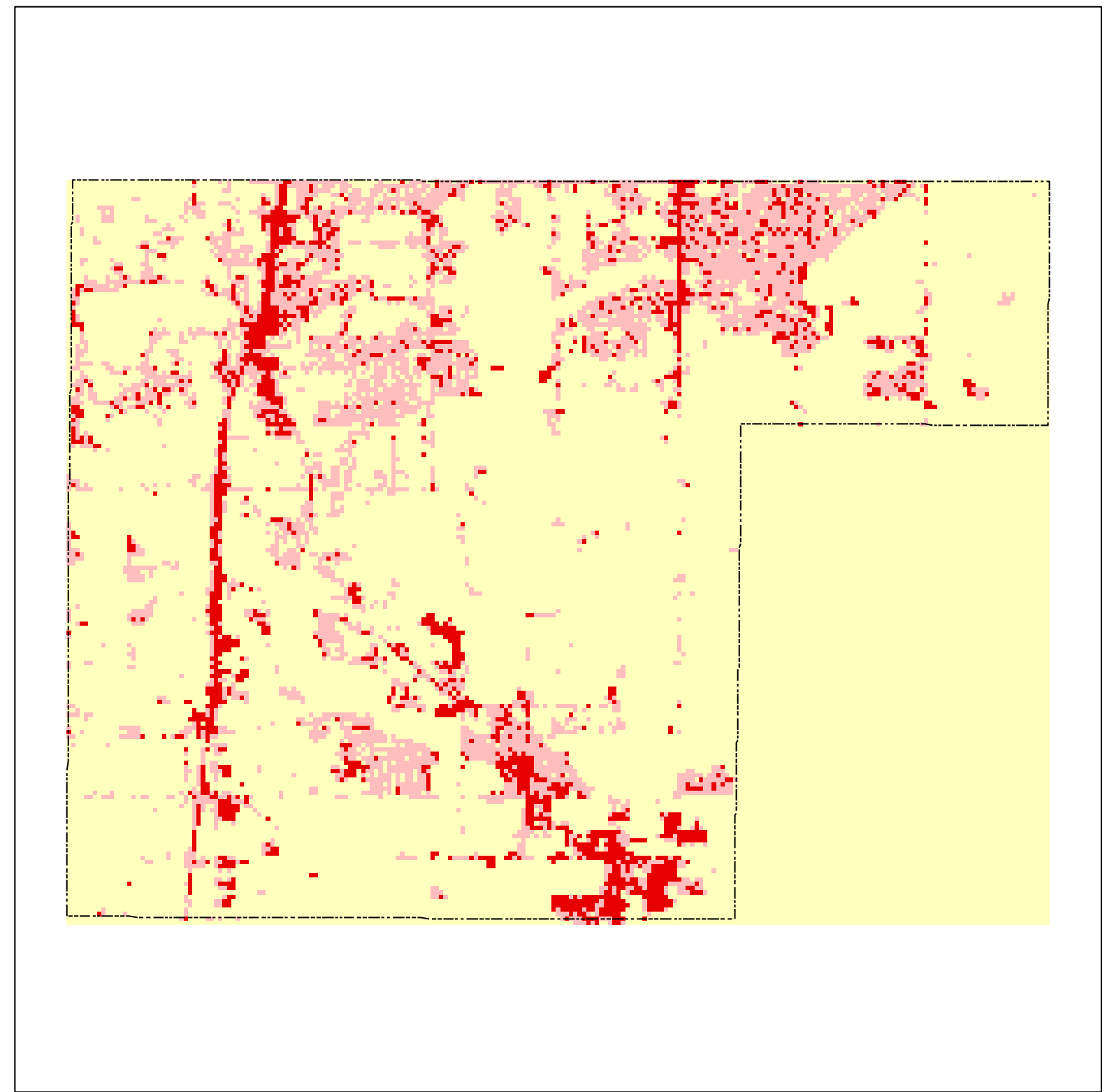


City of Lakeville Impervious Coverage based on Satellite Remote Sensing

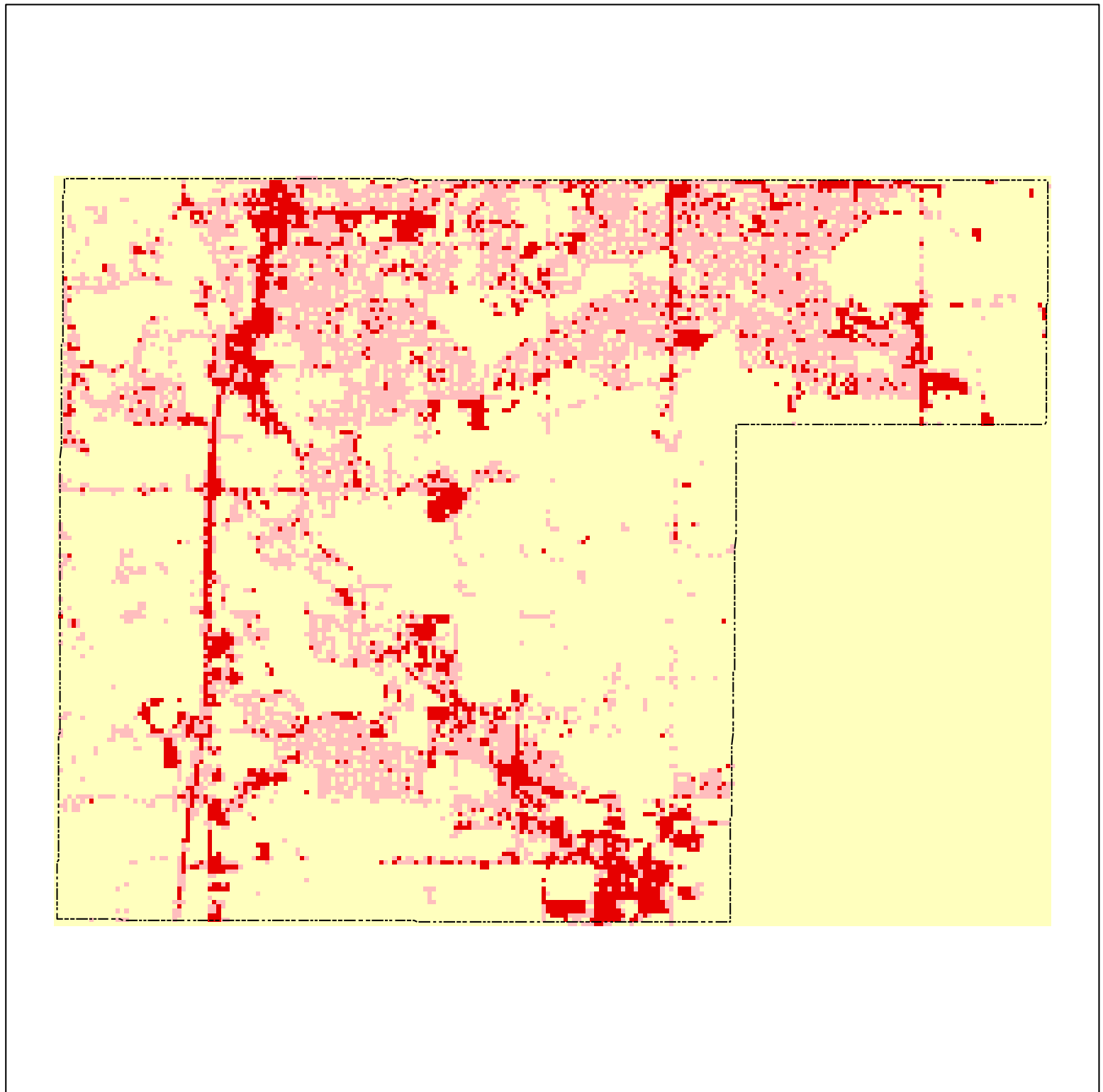
1986



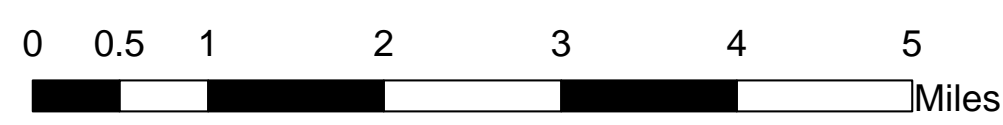
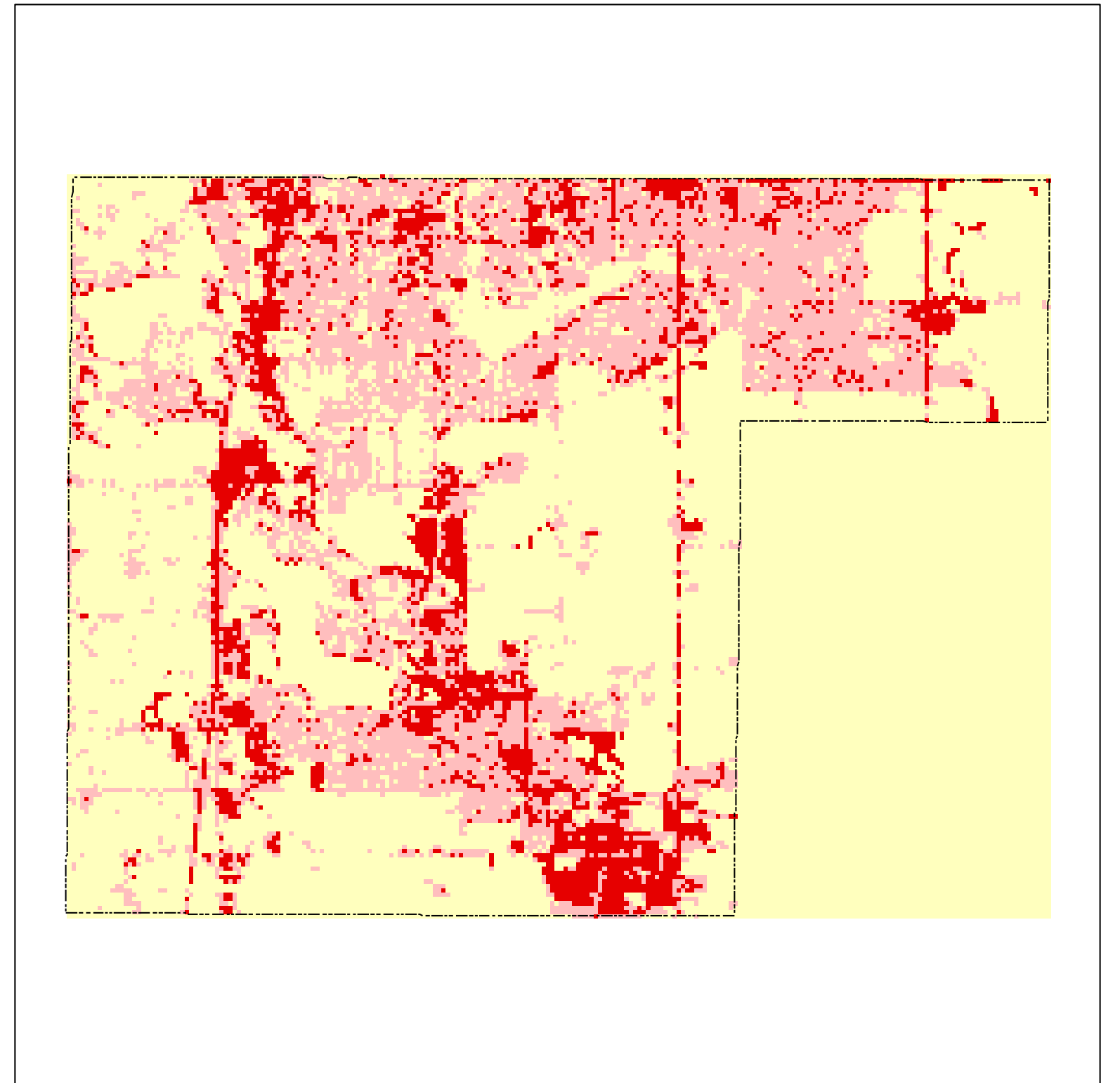
1991



1998



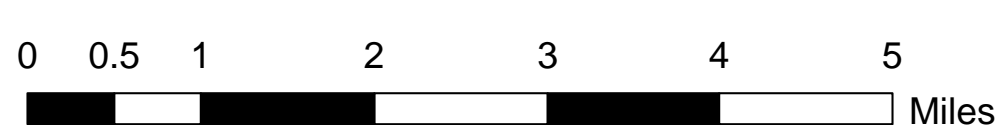
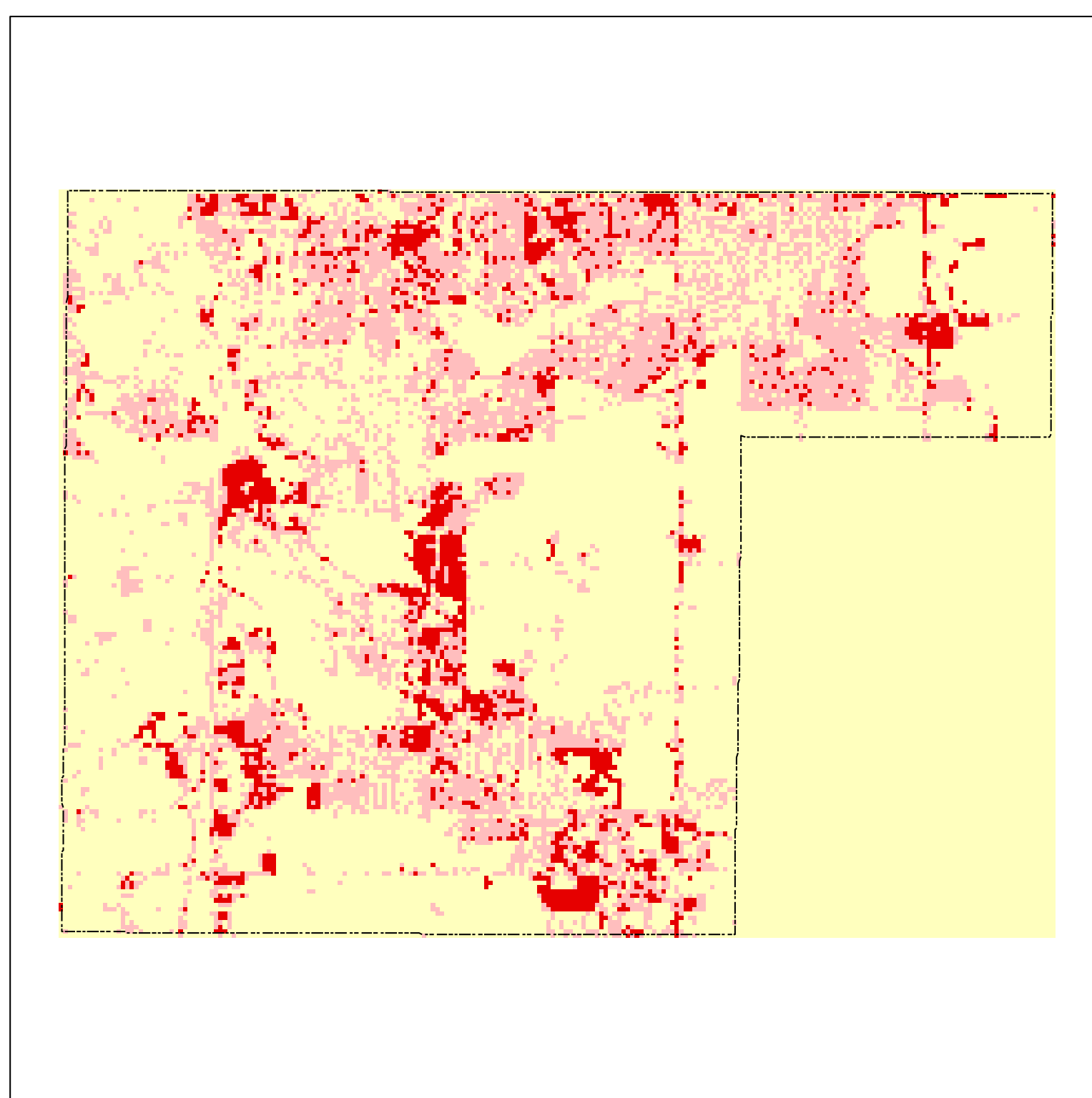
2002



1986 through 2002 Impervious Cover



Percent Change from 1986 to 2002



Municipality	Impervious Acres				1986-2002 Change
	1986	1991	1998	2002	
Lakeville	1735.9	2464.3	3329.7	4500.0	2764.1

% Change

