

Preventing Storm Water Pollution: What We Can Do ~Fleet Maintenance~

FUELING



- Clean fueling areas often using approved methods.
- **DO NOT** top off fuel tank.
- Know location of emergency pump shut-off button.

GENERAL GUIDELINES



- Maintain vehicles and equipment in designated areas.

- Park damaged, leaking, or dirty vehicles under cover.



- Keep maintenance areas clean by promptly disposing of waste.



DISPOSAL METHODS



- Recycle or properly dispose of all used fluids, hydraulic filters, and batteries.



- Store all used fluids in properly labeled containers.

PARTS CLEANING



- Clean parts using designated cleaning stations.
- Allow parts to fully drain before removing from cleaning station.

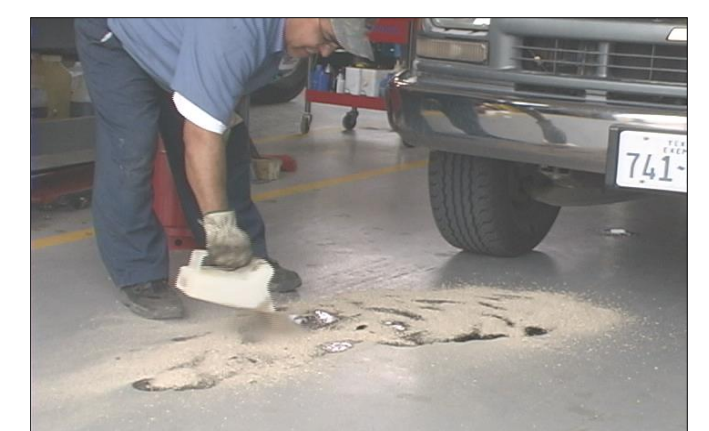
Employees who service and repair our vehicles and equipment can help reduce water pollution by following precautions in their daily activities.

Protecting water quality requires that all employees do their part to prevent storm water pollution.

LEAKS and SPILLS



- Inspect for leaks or stains around vehicles and equipment.



- Immediately clean up spills.

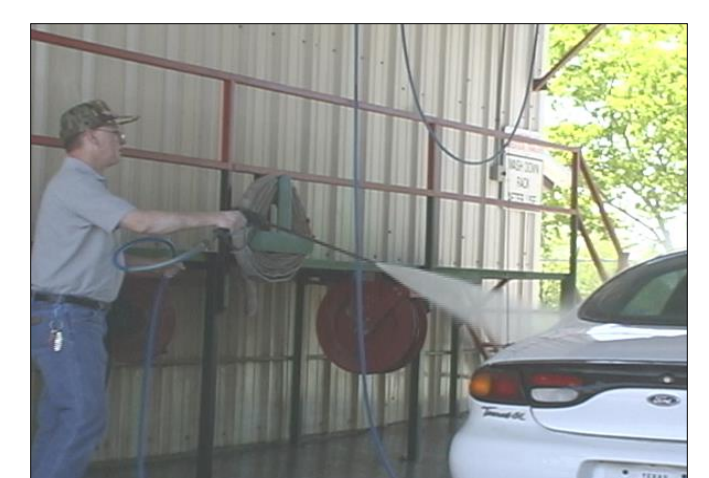
SHOP and PAVEMENT CLEANING



- **DO NOT** hose down outside work areas.
- Use dry methods to clean work areas.
- Dispose of mop water properly.
- Clean outside work areas when rain is forecast.



WASHING



- Wash equipment and vehicles in designated facilities.